

Makita[®]

XGT - 40V MAX LI-ION SERIES

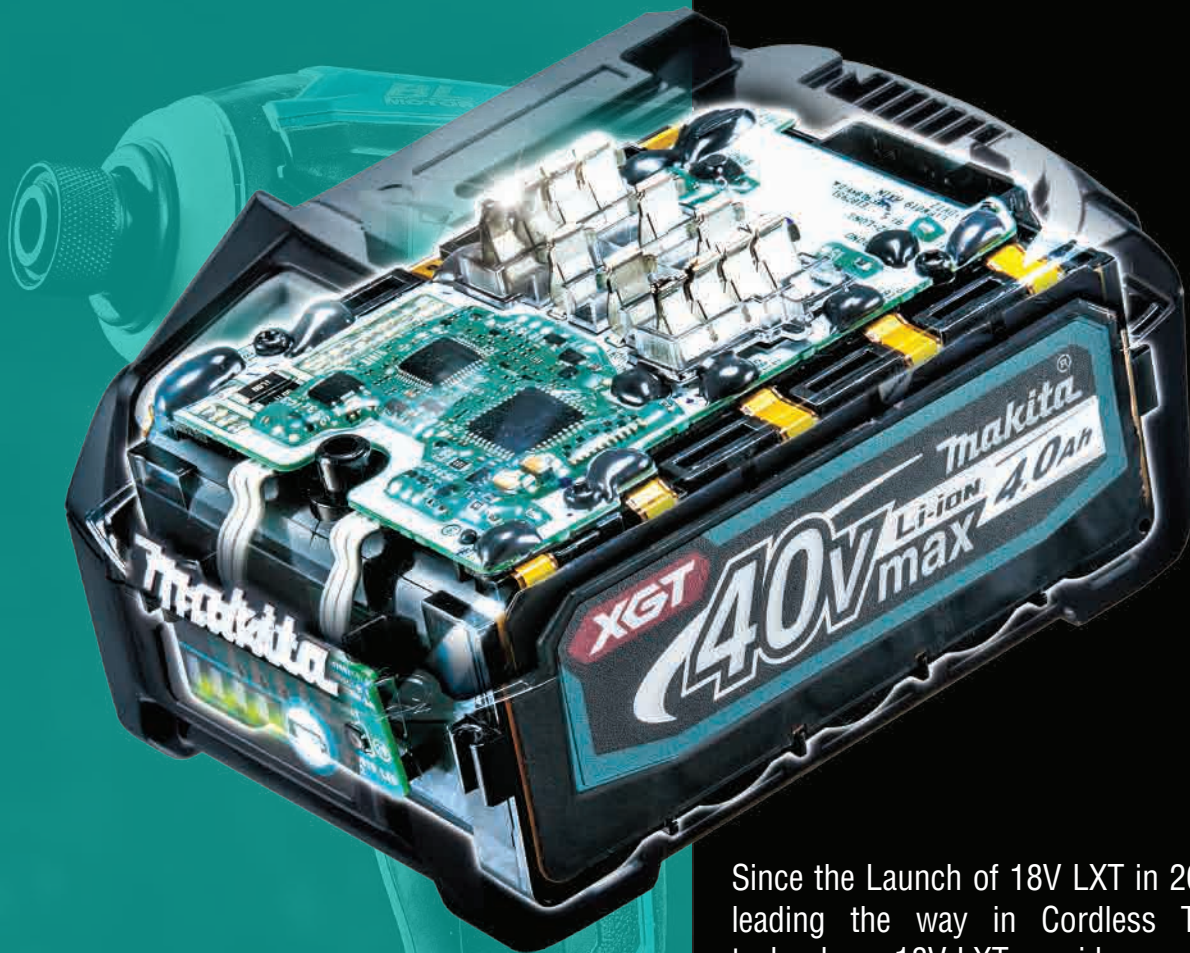
XGT

40V **Li-ion**
max



XGT

XGT is a new system with its own tools, batteries, and chargers. A combination of innovative tool design and higher output batteries provides a genuine solution for high demand industrial users



Since the Launch of 18V LXT in 2005, Makita has been leading the way in Cordless Tool innovation and technology. 18V LXT provides consumers with not only the largest range on one battery, it also provides consumers with the most reliable and efficient tools available.

Our vision as a Company is to provide consumers with a battery solution for all applications across Building Construction, Industrial, Outdoor Power Equipment and Commercial Cleaning Channels In keeping with our vision.

Makita is ready to lead the way once again in 2020, we are excited to announcement the launch of our new XGT 40V battery system that will coexist with LXT and continue towards our vision of a battery solution for all applications!



INDEX

05 — **40V MAX LI-ION BATTERY & CHARGER**

06 — **DRIVER DRILL**
DF001G

07 — **PERCUSSION DRIVER DRILL**
HP001G

08 — **IMPACT DRIVER**
TD001G

09 — **IMPACT WRENCH**
TW001G

10 — **COMBINATION HAMMERS**
HR002G
HR003G

12 — **ANGLE GRINDERS**
GA004G / GA005G
GA012G / GA013G

14 — **CIRCULAR SAW**
HS004G

15 — **RECIPROCATING SAW**
JR001G



SMART TECHNOLOGY

The XGT range of tools and batteries come with a built-in program, that provides digital communication between the battery and the tool. The battery technology and the tools' motor engineering work together for optimum performance.



Terminal short-circuit prevention structure. The protection wall is provided between terminals against water and dust.



BUILT TOUGH

The batteries have durable rails which hold them securely in place when using the new high power products.

The batteries have waterproof triple-layer structure, heavy-duty outer casing and cell holder for better shock resistance.



A 4-LED fuel gauge indicator is located in the front of the battery making it easy to know when it need to be charged.



FAST CHARGING

The tough 40V Max design is supported by a charging system that charges batteries in as little as 28 minutes.



A charging adapter accessory enables the charging of both LXT and XGT products



FUTURE PROOF

XGT and LXT will co-exist to provide users with an unmatched line-up of cordless tools for professional trade applications all the way up the high demand Industrial applications.



XGT - Battery and Charger

XGT
40V^{Li-ion} max

Fast Charging



DC40RA

220-240 ~ 2 PIN Part #: 191E13-3
220-240 ~ 3 PIN Part #: 191E14-1

**4.0
Ah**



BL4040
Part #: 191B26-6

45min.

XGT - Power Source Kit - PSKG1

Part no	SET CONTENTS									MAKPAC CASE
	BATTERY					CHARGER				
	MODEL	VOLTS	AMPERE	FUEL GAUGE	QTY	MODEL	PORT	PIN	QTY	
191K03-2	BL4040	40V max	4.0Ah	✓	2pcs	DC40RA	1	3	1pc	Type 1



Adapter - ADP10

The introduction of a charging adapter has enabled consumers to charge both **LXT** and **XGT** batteries when using the XGT charger



DC40RA
Part #: 191E14-1

ADP10
Part #: 191C11-5

Compatible with 18V LXT Li-ion batteries

**6.0
5.0
Ah**



**BL1860B
BL1850B**

40min.

**3.0
Ah**



BL1830B

22min.

DF001G

XGT - Cordless 13mm Driver Drill



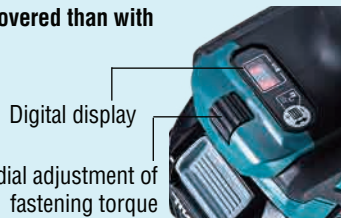
Excellent performance in continuous heavy duty applications

Delivers **140Nm** of Max torque achieved with combination of high power brushless motor and innovative XGT battery

New electronic clutch settings

A higher range of torque can be covered than with mechanical clutch

- 41-stage setting in gear one
- 21-stage setting in gear two



XGT: Electronic Clutch
LXT: Mechanical Clutch

Easy jog dial adjustment of fastening torque

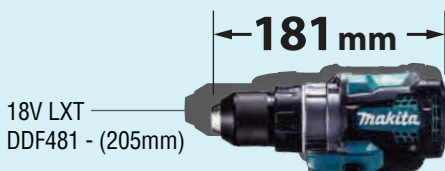
Active Feedback sensing Technology

Active Feedback Sensing Technology (AFT) that turns off the motor if the rotation speed suddenly slows down.



Compact overall length

For easy handling and control



Efficient, Durable, Compact, Lightweight and Outstanding Performance Driver Drill

A powerful, brushless Driver Drill for screwdriving and drilling with two different power settings for professional use. A high maximum torque of 140 / 68 Nm. An ideal choice for jobs that require high power and torque. Integrated LED light. A combination of innovative tool design and higher output batteries, providing a durable solution for the professional user with high demand



Work Amount (on a full battery charge)

144pcs
40v max (4.0Ah)

78pcs
DDF481
18V LXT (5.0Ah)

768pcs
40v max (4.0Ah)

436pcs
DDF481
18V LXT (5.0Ah)

Drilled holes through a 38mm SPF plate with ϕ 2-9/16" Self-feed bit in low speed mode.

Drilled holes through a 38mm SPF plate with ϕ 7/8" Auger bit in high speed mode.

Specification

Capacity	Steel: 20 mm
	Wood (Auger-Bit): 50 mm
	Wood (Self-Feed Bit): 76 mm
	Wood (Hole Saw): 152 mm
Chuck Capacity	1.5 - 13 mm
No Load Speed (RPM)	High / Low: 0 - 2,600 / 0 - 650
Max Fastening Torque	Hard / Soft: 140 / 68 N-m
Max lock torque	125 Nm
Sound Pressure Level	75 dB(A)
Dimensions (L x W x H)	181x86x282 mm
Net weight	3.0 kg

Available Variants

TYPE	VARIANTS	BATTERIES	CHARGER	MAKPAC CASE
W/O Battery / Charger	DF001G Z	-	-	-
With Battery / Charger	DF001G M2	BL4040 (4.0Ah) 2pcs	DC40RA 1pc	Type 3

HP001G

XGT - Cordless 13mm Percussion Driver Drill



Excellent performance in continuous heavy duty applications

Delivers **140Nm** of Max torque achieved with combination of high power brushless motor and innovative XGT battery

Electronic clutch settings

A higher range of torque can be covered than with mechanical clutch

- 41-stage setting in gear one
- 21-stage setting in gear two

Easy jog dial adjustment of fastening torque

Active Feedback sensing Technology

Active Feedback Sensing Technology (AFT) that turns off the motor if the rotation speed suddenly slows down.

Compact overall length

For easy handling and control

182mm

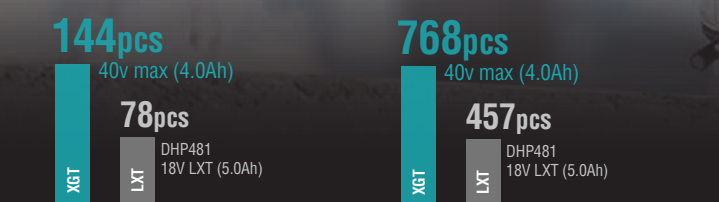
18V LXT (DHP481 - 205mm)

Efficient, Durable, Compact, Lightweight and Outstanding Performance Percussion Driver Drill

A powerful, brushless Percussion Driver Drill for screwdriving and drilling with two different power settings for professional use. A high maximum torque of 140 / 68 Nm. An ideal choice for jobs that require high power and torque. Integrated LED light. A combination of innovative tool design and higher output batteries, providing a durable solution for the professional user with high demand



Work Amount (on a full battery charge)



Drilled holes through a 38mm SPF plate with ø2-9/16" Self-feed bit in low speed mode. Drilled holes through a 30mm brick with ø8 mm TCT drill bit in high speed mode.

Specification

Capacity	Steel: 20 mm / Wood (Auger-Bit): 50 mm Wood (Self-Feed Bit): 76 mm / (Hole Saw): 152 mm Masonry: 20 mm
Chuck Capacity	1.5 - 13 mm
Impacts Per Minute (IPM)	High / Low: 0 - 39,000 / 0 - 9,750
No Load Speed (RPM)	High / Low: 0 - 2,600 / 0 - 650
Max Fastening Torque	Hard / Soft: 140 / 68 N-m
Max lock torque	125 Nm
Sound Pressure Level	85 dB(A)
Sound Power Level	96 dB(A)
Dimensions (L x W x H)	182x86x282 mm
Net weight	3.0 kg

Available Variants

TYPE	VARIANTS	BATTERIES	CHARGER	MAKPAC CASE
W/O Battery / Charger	HP001G Z	-	-	-
With Battery / Charger	HP001G M2	BL4040 (4.0Ah) 2pcs	DC40RA 1pc	Type 3

TD001G

XGT - Cordless Impact Driver

XGT
40V^{max} Li-Ion BL MOTOR XPT



Max. Fastening Torque
220N.m
 with powerful
 brushless motor

Twin LED job light

Control panel for selecting
 the right settings from
 multiple operation modes



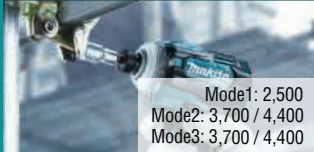
One-touch bit
 installation,
 rigid anvil holder
 with ball
 bearings reduces
 bit wobbling

10 Tightening modes

Wood mode
 driving at low speed until fastening
 begins



3 Bolt mode
 with rotation auto stop for tightening/
 loosening bolts for more efficient work



T1 Teks screw (thin metal)
 Driving self-drilling screws to a
 thin gauge metal like a metal stud



T2 Teks screw (thick metal)
 Driving self-drilling screws to a
 thick gauge metal



Max
 0 - 3,700 / 4,400

Hard
 0 - 3,200 / 3,600

Medium
 0 - 2,100 / 2,600

Soft
 0 - 1,100 / 1,100

No load speed / Impacts per min



One-touch 4-speed selector
 Provides precise fastening control for a wide range
 of applications

Quick-change memory mode
 allows operator to rapidly change between two
 registered setting

Driver drill with multiple modes

TD001G is an efficient and powerful brushless Impact Driver with multiple operation modes. The machine has an excellent ability to perform heavy-duty continuous tightening. Constant speed control maintains fastening torque by preventing the rotation speed reduction caused by decreased battery capacity. This machine is a genuine solution for high demand industrial users.



Work Amount (on a full battery charge)

1,280pcs
 40v max (4.0Ah)

784pcs
 DTD171
 18V LXT (5.0Ah)

Drove 65mm coarse thread screw
 Mode: MAX mode

752pcs
 40v max (4.0Ah)

522pcs
 DTD171
 18V LXT (5.0Ah)

Drove 65mm metal fastening screws
 Mode: MAX mode

Specification

Capacity	Machine Screw: M4 - M8 (5/32" - 5/16") Standard Bolt: M5 - M16 (3/16" - 5/8") High Strength Bolt: M5 - M14 (3/16" - 9/16") Coarse thread : 22 - 125 mm (7/8" - 4-7/8")
Hex Shank	6.35 mm (1/4")
No Load Speed (RPM)	Max / H / M / S: 0 - 3,700 / 3,200 / 2,100 / 1,100
Impacts Per Minute (IPM)	Max / H / M / S: 0 - 4,400 / 3,600 / 2,600 / 1,100
Max Fastening Torque	220 Nm
Fastening Torque	Hard / Med / Soft: 170 / 50 / 20 N.m
Sound Pressure Level	96 dB(A)
Sound Power Level	107 dB(A)
Dimensions (L x W x H)	120x86x250 mm
Net weight	2.0 kg

Available Variants

TYPE	VARIANTS	BATTERIES	CHARGER	MAKPAC CASE
W/O Battery / Charger	TD001G Z	-	-	-
With Battery / Charger	TD001G M2	BL4040 (4.0Ah) 2pcs	DC40RA 1pc	Type 2

TW001G

XGT - Cordless Impact Wrench



Twin LED job light

Forward and reverse rotation auto stop mode

High torque with Brushless Motor

Delivers **1800Nm** of Max fastening torque achieved with combination of high power brushless motor and innovative XGT battery

(Note: DTW1001 - 18V LXT: 1,050Nm)



Electronic 4-stage impact power selection

Enables user to control the power and speed depending on the applications



Full Speed Mode

Switches between variable and full speed by pressing the button. Reaches full speed with fewer pull trigger to minimize user's fatigue in continuous work



Compact overall length

For easy handling and control



18V LXT
(DTW1001 - 229mm)

Nut buster Impact Wrench with over 2030N.m Torque

TW001G 3/4" Impact Wrench is and powerful and efficient with nut busting torque of 2030Nm. 4 speed setting with automatic stop function when a strike is detected also with reverse stops function. There is also a Power Mode when this is on the trigger only needs to be depressed 1/2 way to achieve full speed, this elevates stress on the operators trigger finger.



Work Amount (on a full battery charge)

350pcs
40v max (4.0Ah)

XGT

75pcs
DTW1001
18V LXT (5.0Ah)

LXT

Tightening M27 high strength bolts

Tightening M22 high strength bolts

Specification

Fastening Capacities Standard Bolt: M12 - M36
High Strength Bolt: M10 - M27

Square Drive 19 mm (3/4")

No Load Speed (RPM) Max /H/M/S: 0 - 1,800 / 0 - 1,400 / 0 - 1,150 / 0 - 950

Impacts Per Minute (IPM) Max /H/M/S: 0 - 2,500 / 0 - 2,400 / 0 - 2,200 / 0 - 1,900

Max Fastening Torque 1,800 Nm

Dimensions (L x W x H) 217x94x303 mm

Net weight 4.2 kg

Available Variants

TYPE	VARIANTS	BATTERIES	CHARGER	MAKPAC CASE
W/O Battery / Charger	TW001G Z	-	-	-
With Battery / Charger	TW001G M2	BL4040 (4.0Ah) 2pcs	DC40RA 1pc	Type 3

HR003G

XGT - Cordless Combination Hammer 28mm
[Adapted for SDS-PLUS bit]

XGT
40V^{max} **Li-ion** **BL MOTOR** **AVT XPT**



Impact Energy
3.2J

AVT Anti Vibration Technology



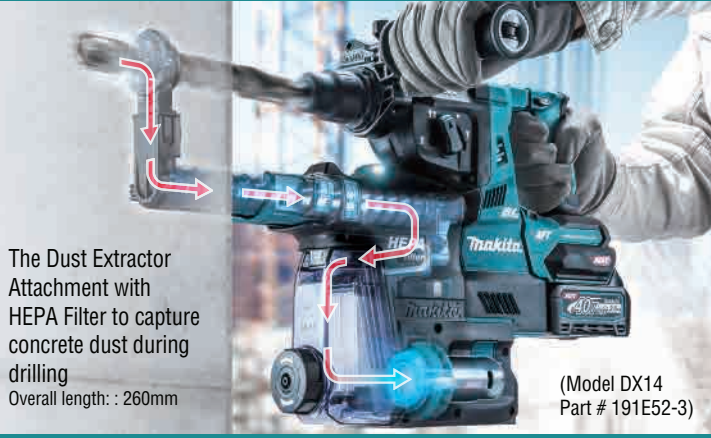
Vibration Level
7.0 m/s²

Good Tool Balance for Increased Operability

The tool's center of gravity is located as close to the handle grip as possible, providing more control and less fatigue



Dust extraction System (Optional)



The Dust Extractor Attachment with HEPA Filter to capture concrete dust during drilling
Overall length: : 260mm

(Model DX14
Part # 191E52-3)

Excellent drilling performance Extremely compact & lightweight

Powerful combination hammer with AVT vibration damping technology for SDS-Plus bits. High 40V max voltage. Drilling with or without impact and chipping. The speed range is 0-980 min-1. The impact force is 3.2J and the maximum capacity for concrete is 28 mm.



Work Amount (on a full battery charge)



Drilled holes a depth of 60mm in concrete with ø10.5mm bit

Specification

Impact Energy	3.2 J
Capacity	Concrete 28 / Steel 13 / Wood 32 / Core Bit 54 / Diamond Core Bit (Dry Type) 65 mm
Blows Per Minute (BPM)	0 - 5,000
No Load Speed (RPM)	0 - 980
Chuck Capacity	1.5 - 13 mm
Sound Pressure Level	95 dB(A)
Sound Power Level	106 dB(A)
Dimensions (L x W x H)	373x102x238 mm
Net weight	4.6 kg

Available Variants

TYPE	VARIANTS	BATTERIES	CHARGER	MAKPAC CASE
W/O Battery / Charger	HR003G Z	-	-	-
With Battery / Charger	HR003G M2	BL4040 (4.0Ah) 2pcs	DC40RA 1pc	Type 4

HR002G

XGT - Cordless Combination Hammer 28mm
[Adapted for SDS-PLUS bit]

XGT **40V** **max** **Li-ion** **MOTOR** **AFT** **AWS** **AVT** **SOFT** **NOLOAD** **XPT**



Impact Energy
3.2J

Excellent drilling performance Extremely compact & lightweight

Powerful combination hammer with AVT vibration damping technology for SDS-Plus bits. High 40V max voltage. Drilling with or without impact and chipping. The speed range is 0-980 min-1. The impact force is 3.2J and the maximum capacity for concrete is 28 mm.



AVT Anti Vibration Technology



SOFT NOLOAD
Automatically reduces the motor speed during idling to suppress the vibration

Active Feedback sensing Technology

Smart function to minimize the danger of kick-back
Shuts down the tool if the rotation speed suddenly slows down



Good Tool Balance for Increased Operability

The tool's center of gravity is located as close to the handle grip as possible, providing more control and less fatigue

AWS Auto-start Wireless System

Connects to compatible Dust Extractor with Bluetooth. Dust extractor starts automatically when the tool starts. Also dust extractor stops on its own when the tool is in rest



Bluetooth Chip (Optional)
Part #: 198900-7

Dust extraction System (Optional)

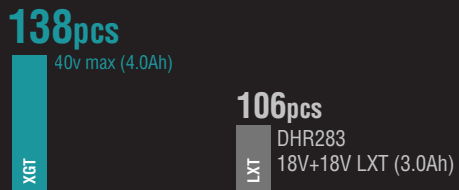
The Dust Extractor Attachment with HEPA Filter to capture concrete dust during drilling

Overall length: : 260mm

(Model DX12
Part # 191E58-1)



Work Amount (on a full battery charge)



Drilled holes a depth of 60mm in concrete with ø10.5mm bit

Specification

Impact Energy	3.2 J
Capacity	Concrete 28 / Steel 13 / Wood 32 / Core Bit 54 / Diamond Core Bit (Dry Type) 65 mm
Blows Per Minute (BPM)	0 - 5,000
No Load Speed (RPM)	0 - 980
Chuck Capacity	1.5 - 13 mm
Sound Pressure Level	93 dB(A)
Sound Power Level	104 dB(A)
Dimensions (L x W x H)	404x102x238 mm
Net weight	4.6 kg

Available Variants

	VARIANTS	BATTERIES	CHARGER	BLUETOOTH CHIP	MAKPAC CASE
W/O Battery / Charger	HR002G Z	-	-	-	-
With Battery / Charger	HR002G M2	BL4040 (4.0Ah) 2pcs	DC40RA 1pc	-	Type 4

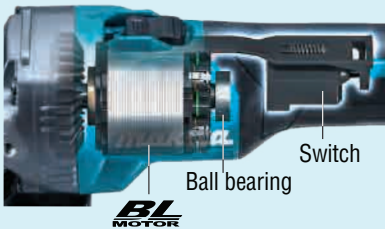
GA004G / GA005G

XGT - Cordless 115mm / 125mm
Slide Switch - Angle Grinders



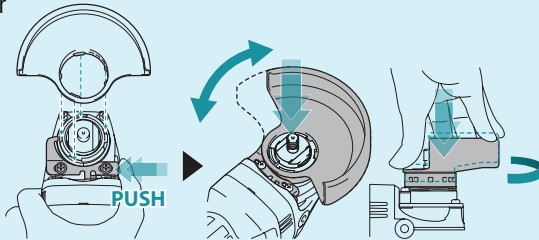
High durability with BL motor

- Large ball bearing supports the motor.
- New switch design to reduce contact weariness



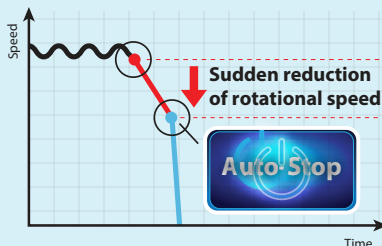
New tool-less wheel cover

- Allows for fast and easy angle adjustment and installation / removal of wheel cover



Active Feedback sensing Technology

- Shuts down the tool, if the rotation speed suddenly slows down



Dust wheel guard (optional)

Wheel guard connects to dust extractors for 115mm/125mm

- 191F81-2
For Cup Wheel



- 191G06-2
For Diamond Wheel



Excellent in continuous heavy-duty work Slide Switch Angle Grinders

A high durability slide switch angle grinders which delivers same power as 1000W corded grinders for demanding professional. These machines features standard electronics, overload protection and AFT-active feedback detection technology. Extreme Protection Technology protects the machine in outdoor applications or harsh environments.



Work Amount (on a full battery charge)

12cuts

40v max (4.0Ah)

XGT

5cuts

DGA454

18V LXT (5.0Ah)

LXT

Cut concrete continuously at a depth of 20mm and measured the time required to cut a 600mm wide concrete plate

Specification	GA004G	GA005G
Wheel Diameter	115 mm	125 mm
Hole Diameter	22.23 mm	22.23 mm
No Load Speed (RPM)	8,500	8,500
Sound Pressure Level	81 dB(A)	81 dB(A)
Sound Power Level	92 dB(A)	92 dB(A)
Dimensions (L x W x H)	410x130x168 mm	410x140x168 mm
Net weight	3.5 kg	3.6 kg

Available Variants

TYPE	VARIANTS	BATTERIES	CHARGER	MAKPAC CASE
W/O Battery / Charger	GA004G Z	-	-	-
	GA005G Z	-	-	-
With Battery / Charger	GA004G M2	BL4040 (4.0Ah) 2pcs	DC40RA 1pc	Type 4
	GA005G M2	BL4040 (4.0Ah) 2pcs	DC40RA 1pc	Type 4

GA012G / GA013G

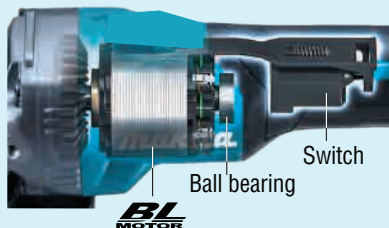
XGT - Cordless 115mm / 125mm

Paddle Switch - Angle Grinders



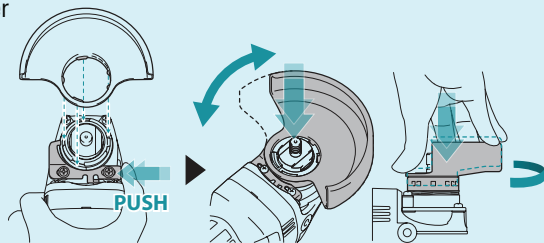
High durability with BL motor

- Large ball bearing supports the motor.
- New switch design to reduce contact weariness



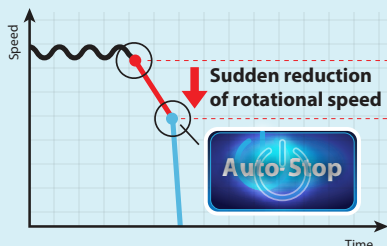
New toolless wheel cover

- Allows for fast and easy angle adjustment and installation / removal of wheel cover



Active Feedback sensing Technology

- Shuts down the tool, if the rotation speed suddenly slows down



Dust wheel guard (optional)

Wheel guard connects to dust extractors for 115mm/125mm

- 191F81-2 For Cup Wheel



- 191G06-2 For Diamond Wheel



Excellent in continuous heavy-duty work Paddle Switch Angle Grinders

A high durability paddle switch angle grinders which delivers same power as 1000W corded grinders for demanding professional. These machines features standard electronics, overload protection and AFT-active feedback detection technology. Extreme Protection Technology protects the machine in outdoor applications or harsh environments.



Work Amount (on a full battery charge)

12cuts
40v max (4.0Ah)

XGT

5cuts

DGA454
18V LXT (5.0Ah)

LXT

Cut concrete continuously at a depth of 20mm and measured the time required to cut a 600mm wide concrete plate

Specification

	GA012G	GA013G
Wheel Diameter	115 mm	125 mm
Hole Diameter	22.23 mm	22.23 mm
No Load Speed (RPM)	8,500	8,500
Sound Pressure Level	81 dB(A)	81 dB(A)
Sound Power Level	92 dB(A)	92 dB(A)
Dimensions (L x W x H)	410x130x168 mm	410x140x168 mm
Net weight	3.5 kg	3.6 kg

Available Variants

TYPE	VARIANTS	BATTERIES	CHARGER	MAKPAC CASE
W/O Battery / Charger	GA012G Z	-	-	-
	GA013G Z	-	-	-
With Battery / Charger	GA012G M2	BL4040 (4.0Ah) 2pcs	DC40RA 1pc	Type 4
	GA013G M2	BL4040 (4.0Ah) 2pcs	DC40RA 1pc	Type 4

HS004G

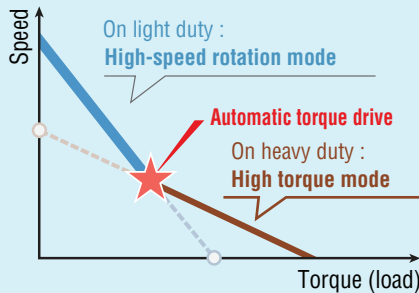
XGT - Cordless 190 / 185 mm Circular Saw

XGT **40V^{max} Li-ion** **BL MOTOR** **ADT** **AWS** (BRAKE) **XPT**



ADT Automatic Torque Drive Technology

Automatically changes the cutting speed according to load conditions for an optimum operations



Overload alert using ADT indicator lamp



Blinks green to indicate that the tool is overloaded

Compatible with guide rail without adapter



Maximum bevel capacity



48°

Blower function



AWS Auto-start Wireless System

Connects to compatible Dust Extractor with Bluetooth. Dust extractor starts automatically when the tool starts. Also dust extractor stops on its own when the tool is in rest



Switch on the tool Dust Extractor is activated

Bluetooth Chip Part #: 198900-7



Excellent balance and High power machine

An efficient brushless 40Vmax XGT Li-Ion circular saw with excellent balance, high power and lightweight maneuverability similar to corded tools.



Work Amount (on a full battery charge)

145pcs
40v max (4.0Ah)

XGT

120pcs
DHS783
18V+18V LXT (3.0Ah)

LXT

Melapi (thickness=60mm / width=300mm)

Specification

Blade Diameter	190 / 185 mm
Max Cutting Capacity	90°: 62.5 / 60 mm 45°: 44.5 / 43 mm 48°: 42 / 41 mm
No Load Speed (RPM)	6,000
Dimensions (L x W x H)	337x210x290 mm
Net weight	4.7 kg

Available Variants

TYPE	VARIANTS	BATTERIES	CHARGER	BLUETOOTH CHIP	MAKPAC CASE
W/O Battery / Charger	HS004G Z	-	-	1pc	-
With Battery / Charger	HS004G M1	BL4040 (4.0Ah) 1pc	DC40RA 1pc	1pc	Type 4

JR001G

XGT - Cordless Reciprocating saw



Effective Lubricating mechanism of slide switch

Rigid Shoe

- Shoe has been reinforced.
- Fixed type shoe is used for added durability

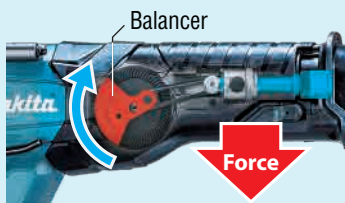
Rubber Joint Structure

The tool body is separated into the upper and lower housings which joined with vibration absorbing cushion rubbers to reduce load on battery and terminal

High Power and lightweight

Higher power delivered by the BL motor designed to best suit XGT battery. Lightweight achieved by employing one XGT battery drive but with High power

Smooth cutting with vertical crank system



The crank mechanism has been designed to rotate vertically to provides less vibration to the user

Tool-less shoe adjustment



Lever system has been designed for easier adjustment

Easy blade ejection lever



Simply insert the blade for installation. Removal can be done with single action no need to touch the blade. A great feature when working with hot blades.

Lightweight, Powerful, Durable and Built to perform

An efficient brushless reciprocating saw for spark-free cutting of metal and demolition work for professional use. Possibility to choose two different speed settings, stroke length of 32 mm and stroke rate of 0-3 000 min-1 with continuous control from the switch. Saw is also equipped with quick-release blade attachment for fast and effortless blade change.



Work Amount (on a full battery charge)

130pcs

40v max (4.0Ah)

XGT

87pcs

DJR360
18V+18VLXT (3.0Ah)

LXT

ø25.4mm (1") Carbon steel pipe

155pcs

40v max (4.0Ah)

XGT

103pcs

DJR360
18V+18VLXT (3.0Ah)

LXT

SPF 2 x 10

Specification

Length of Stroke	32 mm
Strokes Per Minute (SPM)	High / Low: 0 - 3,000 / 0 - 2,300
Capacity	Pipe : 130 mm / Wood: 255 mm
Sound Pressure Level	85 dB(A)
Sound Power Level	96 dB(A)
Dimensions (L x W x H)	472x88x239 mm
Net weight	4.5kg

Available Variants

TYPE	VARIANTS	BATTERIES	CHARGER	CARRY CASE
W/O Battery / Charger	JR001G Z	-	-	-
With Battery / Charger	JR001G M2	BL4040 (4.0Ah) 2pcs	DC40RA 1pc	Plastic Case

40Vmax Lithium-ion Battery Series



Makita

MAKITA GULF FZE

P.O.Box 17133, Jebel Ali FZE (South), Dubai - U.A.E.
Tel. (971) 4 8860804 | Fax. (971) 4 8860805 | www.makita.ae

PART#: (Z)000050 | PRINTED IN U.A.E.