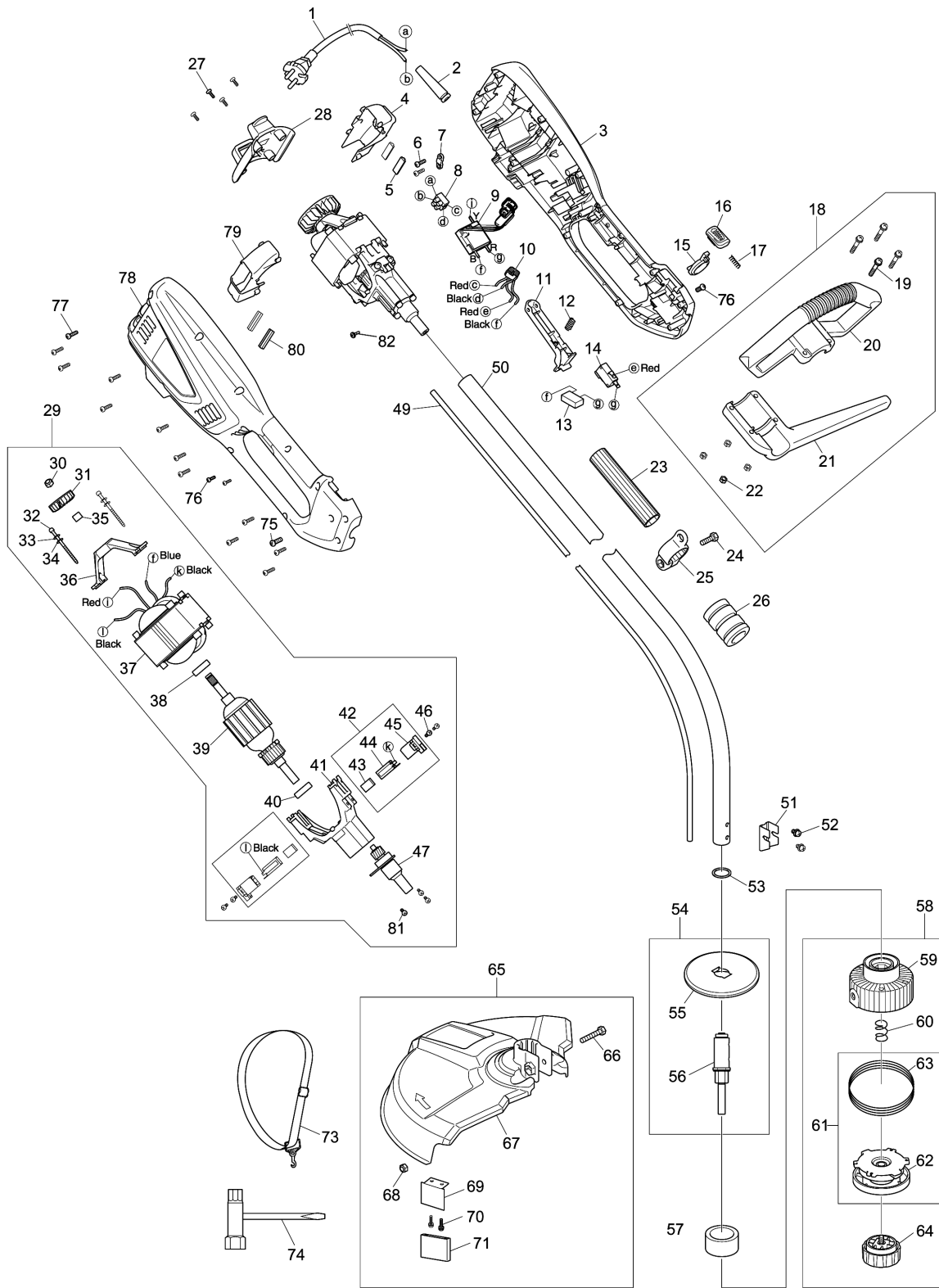


Model No.UR3501 ELECTRIC GRASS TRIMMER



Model No.UR3501 ELECTRIC GRASS TRIMMER

Item	Parts No.	Description	I/C	Qty	New/Old	Opt. 1	Opt. 2	Note
001	YA00000497	POWER CORD & PLUG		1				
002	YA00000516	CORD PROTECTOR		1				
003	YA00000660	HOUSING ASSEMBLY		1				
D10		INC. 078						
004	YA00000562	LEFT VOLUTE CASE		1				
005	YA00000514	RUBBER PAD		2				
006	YA00000618	TAPPING SCREW ST4X14		2				
007	YA00000547	CABLE PRESS BOARD		1				
008	YA00000501	TERMINAL SET		2				
009	YA00000643	PCB CONTROL BOARD		1				
010	YA00000499	INDUCTANCE		1				
011	YA00000554	SWITCH TRIGGER		1				
012	YA00000513	SPRING		1				
013	YA00000498	CAPACITOR		1				
014	YA00000555	SWITCH		1				
015	YA00000539	SPACING COLLAR		1				
016	YA00000525	PUSH BUTTON		1				
017	YA00000511	COMPRESSION SPRING		1				
018	YA00000620	AUXILIARY HANDLE ASSEMBLY		1				
D10		INC. 19-22						
019	YA00000621	NYLOC SCREW		4				
020	YA00000564	AUX.HANDLE COVER		1				
021	YA00000563	AUX.HANDLE SUPPORT		1				
022	YA00000622	SELF-LOCKING NUT M5		4				
023	YA00000623	THE INSULATING SHEATH		1				
024	YA00000624	PAN HEAD MACHINE SCREWS M6X20		1				
025	YA00000541	SHOULD BELT RING		1				
026	YA00000521	RUBBER COVER		1				
027	YA00000625	SELF TAPPING SCREW		4				
028	YA00000560	REAR COVER		1				
029	YA00000626	MOTOR ASSEMBLY 230V/1000W		1				
D10		INC. 30-41, 43-47, 81						
030	YA00000627	SELF-LOCKING NUTS M6		1				
031	YA00000507	IMPELLER		1				
032	YA00000538	STATOR SCREW		2				
033	YA00000523	SPRING WASHER		2				
034	YA00000524	FLAT WASHER		2				
035	YA00000531	AXLE SLEEVE		1				
036	YA00000526	REAR BRACKET		1				
037	YA00000505	STATOR ASS'Y		1				
038	YA00000431	608 BEARING		1				

Please order the parts with part number.

Print Date 31/3/2020

Model No.UR3501 ELECTRIC GRASS TRIMMER

Item	Parts No.	Description	I/C	Qty	New/Old	Opt. 1	Opt. 2	Note
039	YA00000658	ROTOR ASSEMBLY		1				
040	YA00000430	BEARING		1				
041	YA00000629	FRONT BRACKET ASSEMBLY		1				
042	YA00000489	CARBON BRUSH ASS'Y		2				
D10		INC. 43-45						
043	YA00000504	CARBON BRUSH		1				
044	YA00000502	COPPER BRUSH HOLDER		1				
045	YA00000503	BRUSH HOLDER BRACKET		1				
046	YA00000630	PAN HEAD SCREW M4X12 WITH WR		4				
047	YA00000483	SHAFT ASS'Y		1				
049	YA00000551	FLEXIBLE SHAFT		1				
050	YA00000495	TUBE ASS'Y		1				
051	YA00000527	FIXING FRAME		1				
052	YA00000647	COMBINATION MACHINE SCREW		2				
053	YA00000534	SEALING RING		1				
054	YA00000485	OUTPUT SHAFT ASS'Y		1				
D10		INC. 55-56						
055	YA00000432	SAFETY GUARD		1				
056	YA00000482	SHAFT JOINT ASS'Y		1				
057	YA00000568	DUST PROOF RING		1				
058	YA00000649	GRASS HEAD ASSEMBLY		1				
D10		INC. 59-60,62-64						
059	YA00000650	CUTTING HEAD SEAT ASSEMBLY		1				
060	YA00000512	COMPRESSION SPRING		1				
061	YA00000651	WINDING SEAT ASSEMBLY		1				
D10		INC. 62-63						
062	YA00000476	SPOOL COVER ASS'Y		1				
063	YA00000635	NYLON LINE		1				
064	YA00000652	KNOB ASSEMBLY		1				
065	YA00000653	SHIELD ASSEMBLY		1				
D10		INC. 66-71						
066	YA00000654	BOLT M6X35		1				
067	YA00000544	SAFETY GUARD		1				
068	YA00000627	SELF-LOCKING NUTS M6		1				
069	YA00000529	BLADE		1				
070	YA00000655	TRUSS HEAD TAPPING SCREW 4X12		2				
071	YA00000518	BLADE COVER		1				
073	YA00000639	STRAP		1				
074	YA00000437	SPANNER		1				
075	YA00000640	SCREW M5X10		2				

Model No.UR3501 ELECTRIC GRASS TRIMMER

Item	Parts No.	Description	I/C	Qty	New/Old	Opt. 1	Opt. 2	Note
076	YA00000641	SELF TAPPING SCREW		2				
077	YA00000656	SELF TAPPING SCREW ST4.2		12				
078	YA00000660	HOUSING ASSEMBLY		1				
D10		INC. 3						
079	YA00000561	RIGHT VOLUTE HOUSING		1				
080	YA00000514	RUBBER PAD		2				
081	YA00000630	PAN HEAD SCREW M4X12 WITH WR		3				
082	YA00000657	CROSS RECESSED HEAD SCREWS M3		1				

Please order the parts with part number.

Print Date 31/3/2020