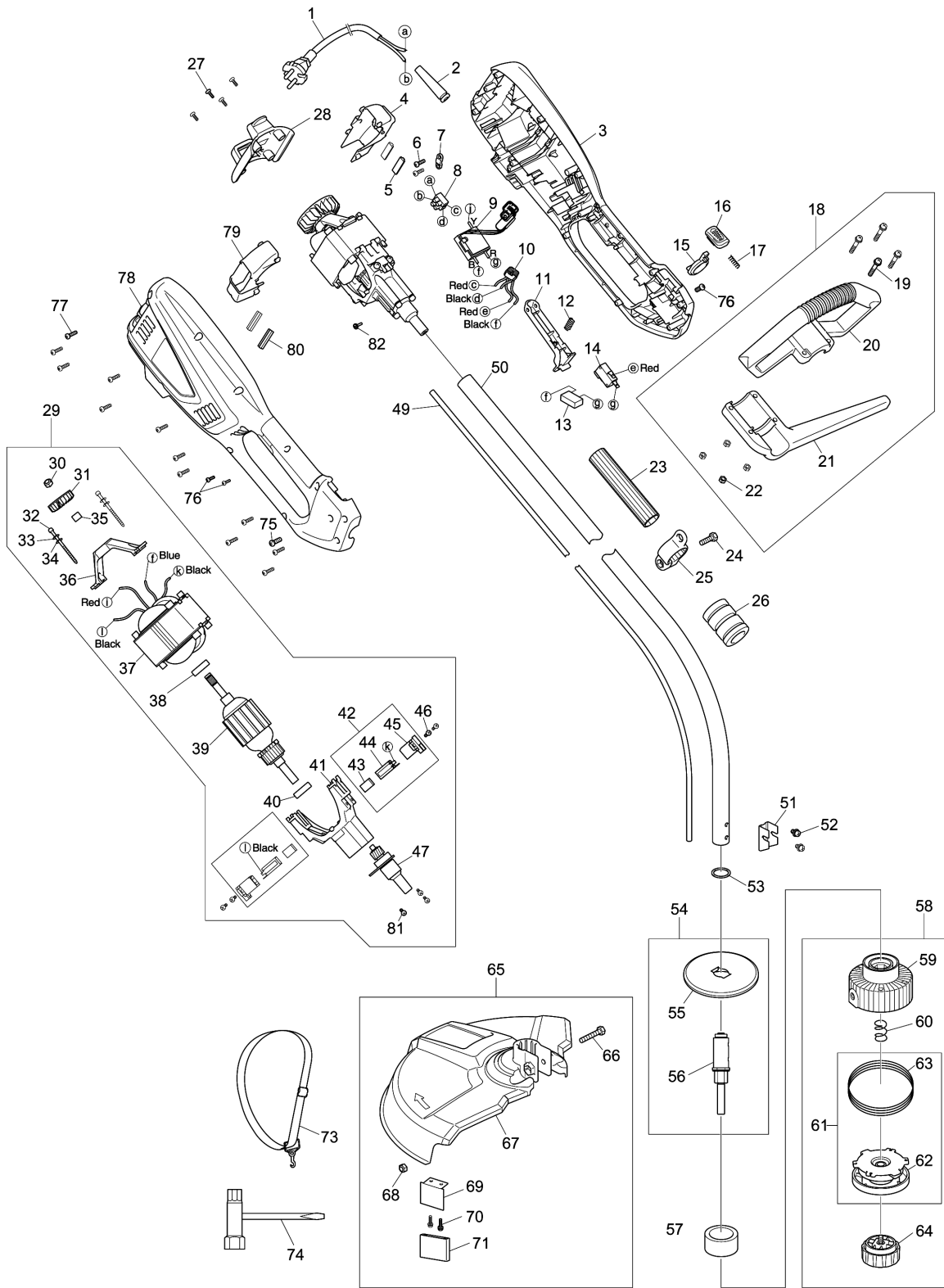


Model No.UR3500 ELECTRIC GRASS TRIMMER



Model No.UR3500 ELECTRIC GRASS TRIMMER

| Item | Parts No. | Description | I/C | Qty | New/Old | Opt. 1 | Opt. 2 | Note |
|-------|------------|-------------------------------|-----|-----|---------|--------|--------|------|
| 001 | YA00000497 | POWER CORD & PLUG | | 1 | | | | |
| 002 | YA00000516 | CORD PROTECTOR | | 1 | | | | |
| 003 | YA00000660 | HOUSING ASSEMBLY | | 1 | | | | |
| D10 | | INC. 78 | | | | | | |
| 004 | YA00000562 | LEFT VOLUTE CASE | | 1 | | | | |
| 005 | YA00000514 | RUBBER PAD | | 2 | | | | |
| 006 | YA00000618 | TAPPING SCREW ST4X14 | | 2 | | | | |
| 007 | YA00000547 | CABLE PRESS BOARD | | 1 | | | | |
| 008 | YA00000501 | TERMINAL SET | | 2 | | | | |
| 009 | YA00000643 | PCB CONTROL BOARD | | 1 | | | | |
| 010 | YA00000499 | INDUCTANCE | | 1 | | | | |
| 011 | YA00000554 | SWITCH TRIGGER | | 1 | | | | |
| 012 | YA00000513 | SPRING | | 1 | | | | |
| 013 | YA00000498 | CAPACITOR | | 1 | | | | |
| 014 | YA00000555 | SWITCH | | 1 | | | | |
| 015 | YA00000539 | SPACING COLLAR | | 1 | | | | |
| 016 | YA00000525 | PUSH BUTTON | | 1 | | | | |
| 017 | YA00000511 | COMPRESSION SPRING | | 1 | | | | |
| 018 | YA00000620 | AUXILIARY HANDLE ASSEMBLY | | 1 | | | | |
| D10 | | INC. 19-22 | | | | | | |
| 019 | YA00000621 | NYLOC SCREW | | 4 | | | | |
| 020 | YA00000564 | AUX.HANDLE COVER | | 1 | | | | |
| 021 | YA00000563 | AUX.HANDLE SUPPORT | | 1 | | | | |
| 022 | YA00000622 | SELF-LOCKING NUT M5 | | 4 | | | | |
| 023 | YA00000623 | THE INSULATING SHEATH | | 1 | | | | |
| 024 | YA00000624 | PAN HEAD MACHINE SCREWS M6X20 | | 1 | | | | |
| 025 | YA00000541 | SHOULD BELT RING | | 1 | | | | |
| 026 | YA00000521 | RUBBER COVER | | 1 | | | | |
| 027 | YA00000453 | SELF-TAPPING SCREW | | 4 | | | | |
| 028 | YA00000560 | REAR COVER | | 1 | | | | |
| 029 | YA00000645 | MOTOR ASSEMBLY 230V/700W | | 1 | | | | |
| D10 | | INC. 30-41,43-47, 81 | | | | | | |
| 030 | YA00000627 | SELF-LOCKING NUTS M6 | | 1 | | | | |
| 031 | YA00000507 | IMPELLER | | 1 | | | | |
| 032 | YA00000538 | STATOR SCREW | | 2 | | | | |
| 033 | YA00000523 | SPRING WASHER | | 2 | | | | |
| 034 | YA00000524 | FLAT WASHER | | 2 | | | | |
| 035 | YA00000531 | AXLE SLEEVE | | 1 | | | | |
| 036 | YA00000526 | REAR BRACKET | | 1 | | | | |
| 037 | YA00000506 | STATOR ASS'Y | | 1 | * | | | |
| 037-1 | YA00000506 | STATOR ASS'Y | O | 1 | | | | |

Please order the parts with part number.

Print Date 31/3/2020

Model No.UR3500 ELECTRIC GRASS TRIMMER

| Item | Parts No. | Description | I/C | Qty | New/Old | Opt. 1 | Opt. 2 | Note |
|------|------------|----------------------------------|-----|-----|---------|--------|--------|------|
| 038 | YA00000431 | 608 BEARING | | 1 | | | | |
| 039 | YA00000646 | ROTOR ASSEMBLY | | 1 | | | | |
| 040 | YA00000430 | BEARING | | 1 | | | | |
| 041 | YA00000629 | FRONT BRACKET ASSEMBLY | | 1 | | | | |
| 042 | YA00000489 | CARBON BRUSH ASS'Y | | 2 | | | | |
| D10 | | INC. 43-45 | | | | | | |
| 043 | YA00000504 | CARBON BRUSH | | 1 | | | | |
| 044 | YA00000502 | COPPER BRUSH HOLDER | | 1 | | | | |
| 045 | YA00000503 | BRUSH HOLDER BRACKET | | 1 | | | | |
| 046 | YA00000630 | PAN HEAD SCREW M4X12 WITH WR | | 4 | | | | |
| 047 | YA00000483 | SHAFT ASS'Y | | 1 | | | | |
| 049 | YA00000551 | FLEXIBLE SHAFT | | 1 | | | | |
| 050 | YA00000495 | TUBE ASS'Y | | 1 | | | | |
| 051 | YA00000527 | FIXING FRAME | | 1 | | | | |
| 052 | YA00000647 | COMBINATION MACHINE SCREW | | 2 | | | | |
| 053 | YA00000534 | SEALING RING | | 1 | | | | |
| 054 | YA00000485 | OUTPUT SHAFT ASS'Y | | 1 | | | | |
| D10 | | INC. 55-56 | | | | | | |
| 055 | YA00000432 | SAFETY GUARD | | 1 | | | | |
| 056 | YA00000648 | THE SHAFT JOINT ASSEMBLY | | 1 | | | | |
| 057 | YA00000568 | DUST PROOF RING | | 1 | | | | |
| 058 | YA00000649 | GRASS HEAD ASSEMBLY | | 1 | | | | |
| D10 | | INC. 59-60,62-64 | | | | | | |
| 059 | YA00000650 | CUTTING HEAD SEAT ASSEMBLY | | 1 | | | | |
| 060 | YA00000512 | COMPRESSION SPRING | | 1 | | | | |
| 061 | YA00000651 | WINDING SEAT ASSEMBLY | | 1 | | | | |
| D10 | | INC. 62-63 | | | | | | |
| 062 | YA00000476 | SPOOL COVER ASS'Y | | 1 | | | | |
| 063 | YA00000635 | NYLON LINE | | 1 | | | | |
| 064 | YA00000652 | KNOB ASSEMBLY | | 1 | | | | |
| 065 | YA00000653 | SHIELD ASSEMBLY | | 1 | | | | |
| D10 | | INC. 66-71 | | | | | | |
| 066 | YA00000654 | BOLT M6X35 | | 1 | | | | |
| 067 | YA00000544 | SAFETY GUARD | | 1 | | | | |
| 068 | YA00000627 | SELF-LOCKING NUTS M6 | | 1 | | | | |
| 069 | YA00000529 | BLADE | | 1 | | | | |
| 070 | YA00000655 | TRUSS HEAD TAPPING SCREW 4X12 | | 2 | | | | |
| 071 | YA00000518 | BLADE COVER | | 1 | | | | |
| 073 | YA00000639 | STRAP | | 1 | | | | |
| 074 | YA00000437 | SPANNER | | 1 | | | | |

Model No.UR3500 ELECTRIC GRASS TRIMMER

| Item | Parts No. | Description | I/C | Qty | New/Old | Opt. 1 | Opt. 2 | Note |
|------|------------|----------------------------------|-----|-----|---------|--------|--------|------|
| 075 | YA00000451 | SCREW | | 2 | | | | |
| 076 | YA00000641 | SELF TAPPING SCREW | | 2 | | | | |
| 077 | YA00000656 | SELF TAPPING SCREW ST4.2 | | 12 | | | | |
| 078 | YA00000660 | HOUSING ASSEMBLY | | 1 | | | | |
| D10 | | INC. 3 | | | | | | |
| 079 | YA00000561 | RIGHT VOLUTE HOUSING | | 1 | | | | |
| 080 | YA00000514 | RUBBER PAD | | 2 | | | | |
| 081 | YA00000630 | PAN HEAD SCREW M4X12 WITH WR | | 3 | | | | |
| 082 | YA00000657 | CROSS RECESSED HEAD SCREWS M3 | | 1 | | | | |

Please order the parts with part number.

Print Date 31/3/2020