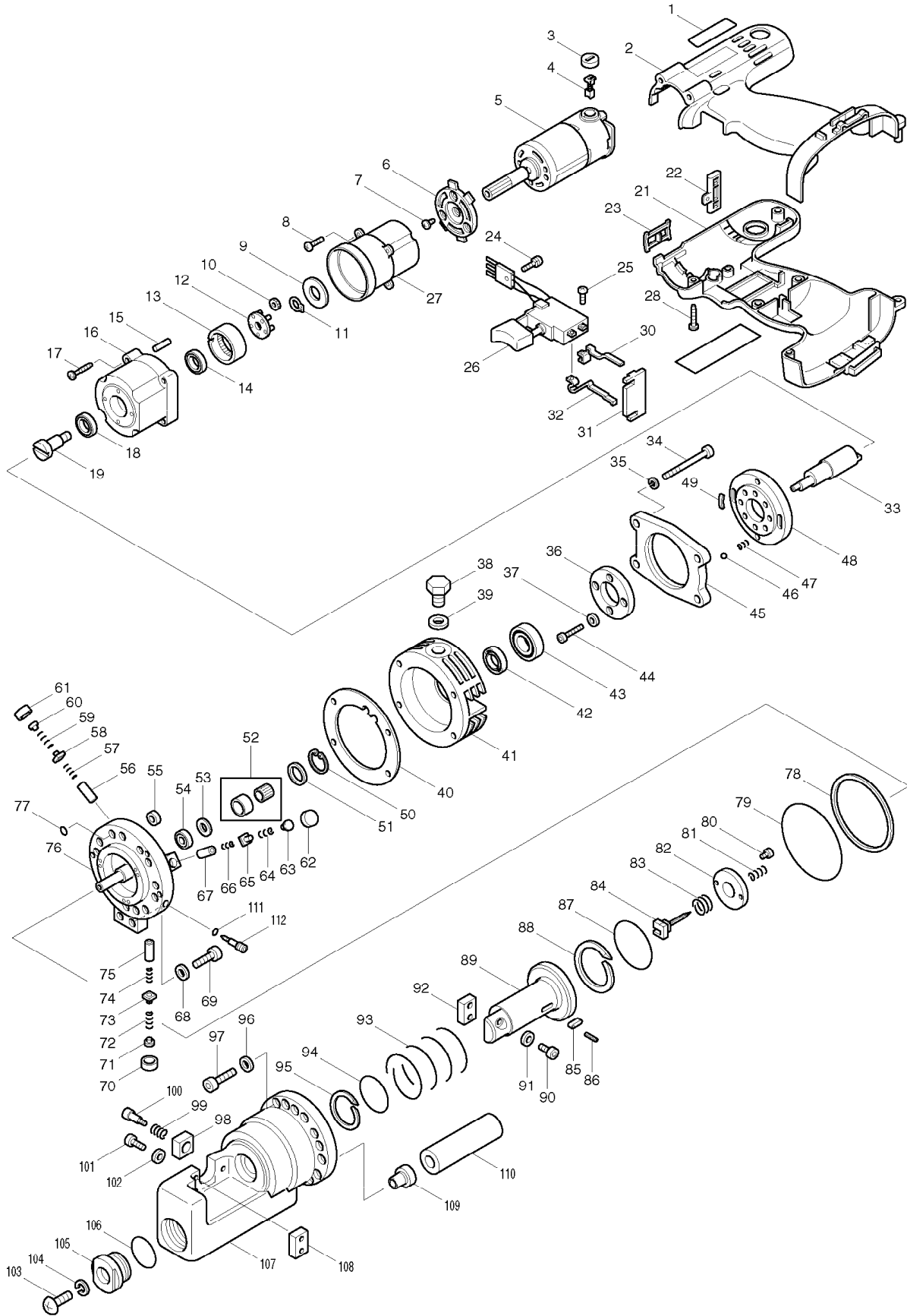


SERVICE DRAWING

MODEL NO. SC161D



SPARE PARTS LIST

MODEL NO. SC161D

ITEM	PART NO.	DESCRIPTION	QTY	NOTE
001	819063-3	MAKITA LABEL	1	
002	183032-3	HOUSING SET	1	
003	643954-4	BRUSH HOLDER CAP	2	
004	191971-3	CARBON BRUSH CB-430	1	
005	629743-1	DC MOTOR	1	
006	317069-0	MOTOR BRACKET	1	
007	266134-1	TAPPING SCREW ST 4X8	3	
008	911017-7	PAN HEAD SCREW M3X12	4	
009	267187-3	FLAT WASHER 16	1	
010	226368-8	SPUR GEAR 14	5	
011	961004-6	RETAINING RING S-8	1	
012	152594-2	CARRIER COMPLATE	1	
013	226397-1	INTERNAL GEAR 45	1	
014	211136-2	BALL BEARING 6801LLB	1	
015	256054-7	PIN 4	1	
016	317324-0	GEAR CASE B	1	
017	265999-8	TAPPING SCREW 4X25	4	
018	211136-2	BALL BEARING 6801LLB	1	
019	323970-9	SPINDLE	1	
021	183032-3	HOUSING SET	1	
022	417150-8	LOCK LEVER	1	
023	417151-6	COVER	1	
024	911006-2	PAN HEAD SCREW M3X8	1	
025	652038-7	PAN HEAD SCREW M3X8	2	
026	651968-9	SWITCH C3LA-2A	1	
027	416628-8	GEAR CASE A	1	
028	266130-9	TAPPING SCREW BIND PT 3X16	8	
030	*****	*****	***	*****
031	687085-9	HOLDER	1	
032	*****	*****	***	*****
033	SC03501140	ECCENTRIC SHAFT	1	
034	SC07512110	BOLT HB5X50	4	
035	942101-7	SPRING WASHER 5	4	
036	SC03251180	FLANGE	1	
037	SC00000068	WASHER 4	4	
038	SC00000061	HEX. BOLT 10X15	1	
039	SC00000489	SEAL WASHER WF10171.6	1	
040	SC04601440	LINER B	1	
041	SC03212300	BEARING HOUSING	1	
042	SC00000484	OIL SEAL MSH15257	1	
043	SC00000050	BALL BEARING 6002RU	1	
044	SC07511060	BOLT HB4X22	4	
045	SC03221200	INTERMEDIATE HOUSING	1	
046	SC07900010	STEEL BALL S4	2	
047	SC04007430	POSITION SPRING	2	
048	SC03222700	FLANGE SET PLATE	1	
049	SC04007620	LEAF SPRING	2	
050	SC00000487	STOP RING H19	1	
051	SC00000467	NEEDLE BEARING HOLDER B T45422	1	
052	SC00000466	NEEDLE BEARING #RNAF81510	1	
053	SC00000465	NEEDLE BEARING HOLDER A T45421	1	
054	211007-3	BALL BEARING 625ZZ	1	
055	SC00000020	MAGNET	2	
056	SC03500390	PISTON	1	

SPARE PARTS LIST

MODEL NO. SC161D

ITEM	PART NO.	DESCRIPTION	QTY	NOTE
057	SC04003020	PISTON RETURN RING	1	
058	*****	*****	***	*****
059	SC00000468	SPRING #43449N2	1	
060	SC00000018	SPRING SUPPORTER	1	
061	SC00000076	URETHAN PACKING	1	
062	SC00000076	URETHAN PACKING	1	
063	SC00000018	SPRING SUPPORTER	1	
064	SC00000468	SPRING #43449N2	1	
065	*****	*****	***	*****
066	SC04003020	PISTON RETURN RING	1	
067	SC03500390	PISTON	1	
068	SC00000066	WASHER 6	2	
069	SC00000097	HEX. SOCKET HEAD BOLT 6X20	2	
070	SC00000076	URETHAN PACKING	1	
071	SC00000018	SPRING SUPPORTER	1	
072	SC00000468	SPRING #43449N2	1	
073	*****	*****	***	*****
074	SC04003020	PISTON RETURN RING	1	
075	SC03500390	PISTON	1	
076	SC03206500	CYLINDER	1	
077	SC06505010	O RING P6	2	
078	SC06503240	BACK-UP RING G55	1	
079	SC06505180	O RING G55	1	
080	922102-1	HEX. SOCKET HEAD BOLT M4X6	2	
081	SC00000023	RELEASE VALVE SPRING	1	
082	SC00000481	STOPPER PLATE #45423	1	
083	SC00000471	SPRING #T45378	1	
084	SC00000462	RELEASE VALVE #T45461	1	
085	SC00000480	KEY T45420	1	
086	SC00000070	SPRING PIN 2.5X10	1	
087	SC06505280	O RING P46	1	
088	SC06503230	BACK-UP RING P46	1	
089	SC03113600	CUTTER ROD	1	
090	SC00000059	HEX. SOCKET HEAD BOLT 5X12	2	
091	SC00000067	WASHER 5	2	
092	SC09002450	CUTTER BLADE SET	1	
093	SC04000160	SPRING	1	
094	SC06505320	O RING P26	1	
095	SC06503190	BACK-UP RING P26	1	
096	SC00000066	WASHER 6	12	
097	922342-1	HEX. SOCKET HEAD BOLT M6X25	12	
098	SC03503890	STOPPER	1	
099	SC00000469	SPRING #T45470	1	
100	SC03500990	BOLT	1	
101	SC00000059	HEX. SOCKET HEAD BOLT 5X12	2	
102	SC00000067	WASHER 5	2	
103	SC00000034	WOOD SCREW 5X60	1	
104	942201-3	SPRING WASHER 8	1	
105	SC03501400	BUSH HOLDER	1	
106	SC06505310	O RING P22A	1	
107	SC03104000	CUTTER HEAD	1	
108	SC09002450	CUTTER BLADE SET	1	
109	SC00000082	BUSH	1	
110	SC09004910	OIL LEVELER SACK	1	

SPARE PARTS LIST

MODEL NO. SC161D

ITEM	PART NO.	DESCRIPTION	QTY	NOTE
111	SC06505300	O RING S4	1	
112	SC03501420	RETURN BULB	1	
A01	SC08100920	PLASTIC CARRYING CASE	1	
A02	SC00000106	OIL 35CC	1	
A03	783201-2	HEX. WRENCH 3	1	
A04	783202-0	HEX. WRENCH 4	1	
A05	783203-8	HEX. WRENCH 5	1	
A06	783204-6	HEX. WRENCH 6	1	
A07	SC00000499	WRENCH 17-14	1	
A08	414938-7	BATTERY COVER	1	
A09	***DC1804	DC1804 BATTERY CHARGER	1	
A10	192827-3	BATTERY 1822	1	
