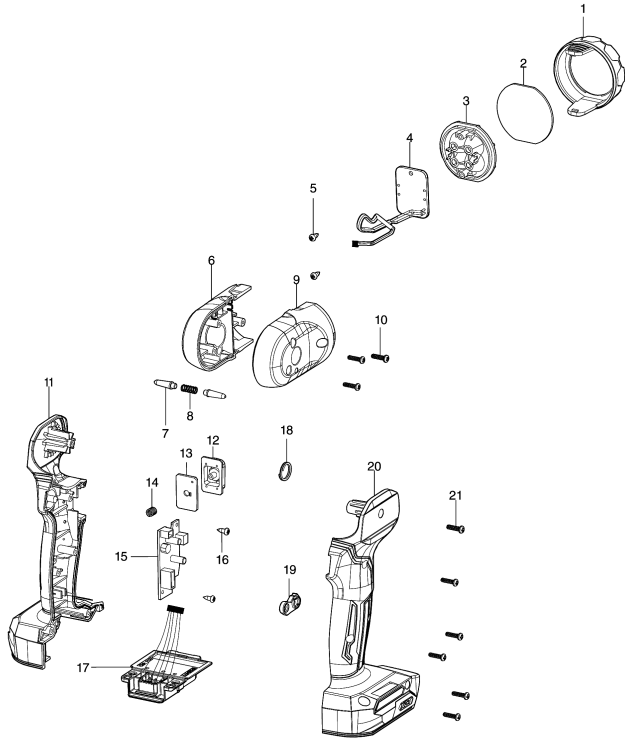


Model No.ML001G CORDLESS FLASHLIGHT



Model No.ML001G CORDLESS FLASHLIGHT

| Item | Parts No. | Description | I/C | Qty | New/Old | Opt. 1 | Opt. 2 | Note |
|-------|------------|-----------------------------------|-----|-----|---------|--------|--------|------|
| 001 | GM00001299 | BEZEL(C1720802002) | | 1 | | | | |
| 002 | GM00001298 | LENS(C1720802001) | | 1 | | | | |
| 003 | GM00002074 | REFLECTOR | | 1 | | | | |
| 004 | GM00002268 | LED PCBA ASSY | | 1 | | | | |
| 005 | GM00001332 | SCREW 3 X 8 PB B0130080702 | | 2 | | | | |
| 006 | GM00002076 | HEAD HOUSING ASSY | | 1 | | | | |
| D10 | | INC. 9 | | | | | | |
| 007 | GM00001295 | LOCKING SHAFT(C4120802001) | | 2 | | | | |
| 008 | GM00001294 | COMPRESSION SPRING B1303802922 | | 1 | | | | |
| 009 | GM00002076 | HEAD HOUSING ASSY | | 1 | | | | |
| D10 | | INC. 6 | | | | | | |
| 010 | GM00001333 | SCREW 3 X 12PB B0130120702 | | 3 | | | | |
| 011 | GM00002269 | HOUSING L/R ASSY | | 1 | | | | |
| D10 | | INC. 20 | | | | | | |
| 012 | GM00002272 | SWITCH COVER ASSY | | 1 | | | | |
| 013 | GM00001709 | SW SPRING HOLDER C0120105003 | | 1 | | | | |
| 014 | GM00002249 | SWITCH SPRING | | 1 | | | | |
| 015 | GM00002273 | MAIN PCBA ASSY | | 1 | | | | |
| 016 | GM00001332 | SCREW 3 X 8 PB B0130080702 | | 2 | | | | |
| 017 | GM00002271 | BATTERY HOLDER ASSY | | 1 | | | | |
| 018 | GM00001292 | RING (B3103184009) | | 1 | * | | | |
| 018-1 | GM00002284 | RING | X | 1 | | | | |
| 019 | GM00001290 | HOOK PLATE(B2804802921) | | 1 | * | | | |
| 019-1 | GM00002285 | HOOK PLATE | X | 1 | | | | |
| 020 | GM00002269 | HOUSING L/R ASSY | | 1 | | | | |
| D10 | | INC. 11 | | | | | | |
| 021 | GM00001333 | SCREW 3 X 12PB B0130120702 | | 6 | | | | |
| A01 | GM00001289 | HOOK BAND SET(G0180200100) | | 1 | * | | | |
| A01-1 | GM00002280 | HOOK BAND SET | < | 1 | | | | |

Please order the parts with part number.

Print Date 13/11/2020