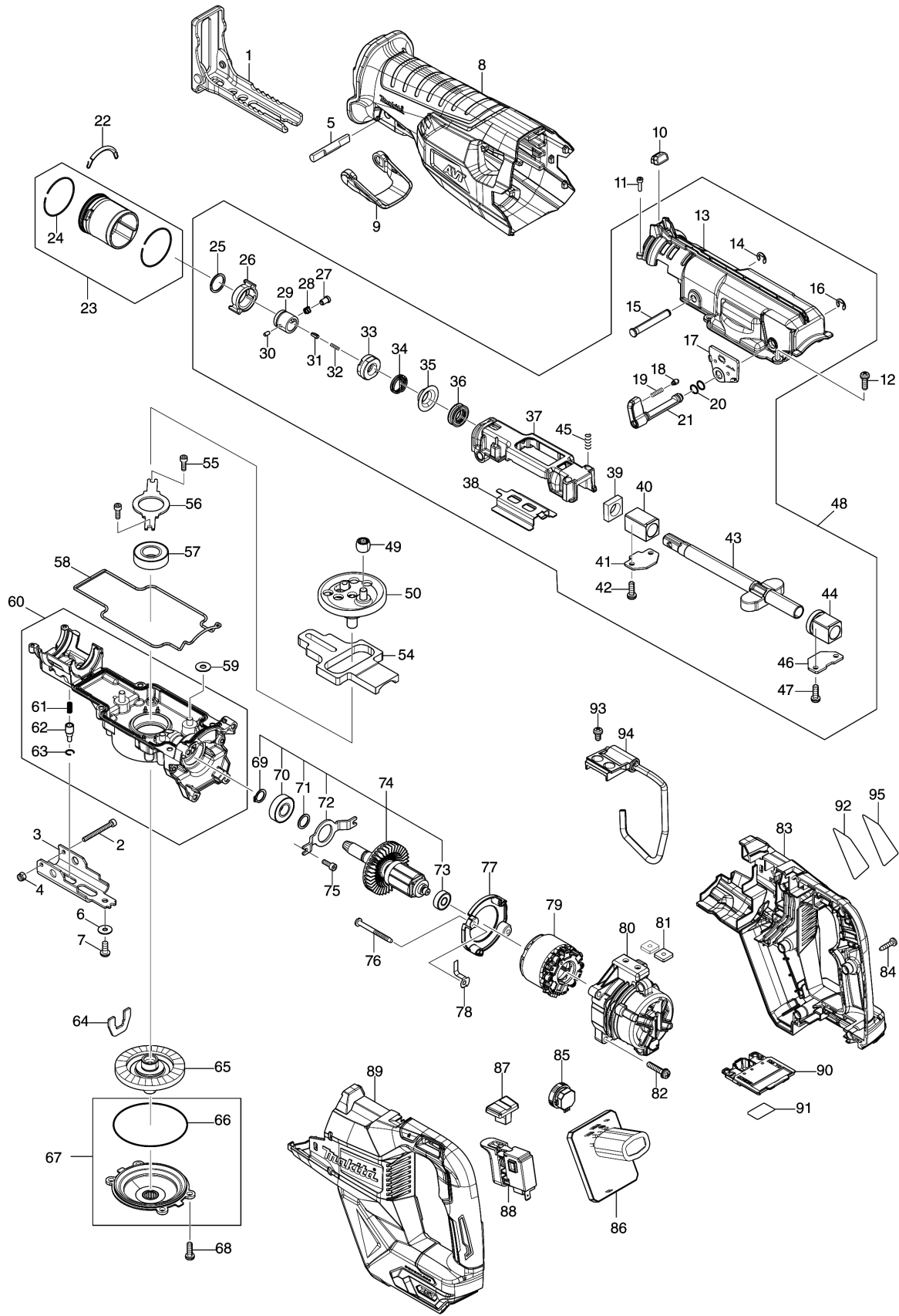


Model No. JR002G CORDLESS RECIPRO SAW



Model No.JR002G CORDLESS RECIPRO SAW

Item	Parts No.	Description	I/C	Qty	New/Old	Opt. 1	Opt. 2	Note
001	162B43-3	SHOE		1				
002	265A78-8	HEX SOCKET HEAD BOLT M4X40		1				
003	347972-1	SHOE GUIDE PLATE		1				
004	252126-6	HEX. LOCK NUT M4-7		1				
005	326599-0	LOCK PIN		1				
006	253194-2	FLAT WASHER 5		1				
007	266169-2	H.S. BUTTON HEAD BOLT M5X12		1				
008	422869-6	INSULATION COVER		1				
009	413F39-4	LOCK LEVER		1				
010	620H78-1	LED CIRCUIT		1				
011	265910-0	HEX. SOCKET HEAD BOLT M3X12		2				
012	911225-0	PAN HEAD SCREW M5X16		4				
013	141H98-7	GEAR HOUSING COVER COMPLETE		1				
C10	422867-0	SEAL PLATE		1				
014	961012-7	STOP RING E-6		1				
015	268012-1	PIN 7		1				
016	961012-7	STOP RING E-6		1				
017	413F41-7	PLATE C		1				
018	413F45-9	PIN 5		1				
019	232745-4	COMPRESSION SPRING 3		1				
020	213021-5	O RING 5		2				
021	271471-0	LEVER 24		1				
022	232583-4	TENSION SPRING 3		1				
023	136707-3	RELEASE DRUM ASS'Y		1				
D10		INC. 24						
024	232746-2	RING SPRING 39		2				
025	257430-8	RETAINING RING(EXT)18		1				
026	313418-9	DRIVING SLEEVE		1				
027	256569-4	SHOULDER PIN 5		1				
028	234381-2	COMPRESSION SPRING 6		1				
029	327650-9	GUIDE SLEEVE		1				
030	256A11-1	PIN 3		1				
031	310912-2	PUSH PIN		1				
032	232472-3	COMPRESSION SPRING 2		1				
033	413F43-3	CONNECTING SLEEVE		1				
034	233594-2	TORSION SPRING 17		1				
035	257742-9	SHOULDER SLEEVE 14		1				
036	213174-0	X RING 14		1				
037	141H95-3	SLIDER SUPPORT COMPLETE		1				
038	347973-9	SLIDE PLATE		1				

Model No.JR002G CORDLESS RECIPRO SAW

Item	Parts No.	Description	I/C	Qty	New/Old	Opt. 1	Opt. 2	Note
039	423343-7	SEAL PLATE 14		1				
040	214212-1	PLANE BEARING 14A		1				
041	345485-6	PLATE A		1				
042	911225-0	PAN HEAD SCREW M5X16		2				
043	162B44-1	SLIDER		1				
044	141H97-9	BEARING COMPLETE		1				
045	233038-2	COMPRESSION SPRING 5		2				
046	345486-4	PLATE B		1				
047	911225-0	PAN HEAD SCREW M5X16		2				
048	136683-1	GEAR HOUSING COVER ASS'Y		1				
D10		INC. 13-21,25-47						
049	212957-5	NEEDLE BEARING 710		1				
050	136712-0	CRANK CAM ASS'Y		1				
054	313419-7	COUNTER WEIGHT		1				
055	922117-8	HEX. SOCKET HEAD BOLT M4X12		2				
056	285051-6	BEARING RETAINER 80		1				
057	211251-2	BALL BEARING 6003LLB		1				
058	422868-8	SEAL RING		1				
059	253804-1	FLAT WASHER 6		3				
060	136676-8	GEAR HOUSING ASS'Y		1				
D10		INC. 61-63						
061	234084-8	COMPRESSION SPRING 3		1				
062	256A09-8	SHOULDER PIN 8		1				
063	232335-3	RING SPRING 8		1				
064	347974-7	PLATE D		1				
065	141H94-5	TORQUE LIMITER COMPLETE		1				
066	213726-7	O RING 62		1				
067	136708-1	BEARING BOX ASS'Y		1				
D10		INC. 66						
068	911225-0	PAN HEAD SCREW M5X16		4				
069	961052-5	RETAINING RING S-12		1				
070	211131-2	BALL BEARING 6001DDW		1				
071	267104-3	FLAT WASHER 12		1				
072	285050-8	BEARING RETAINER 69		1				
073	210062-2	BALL BEARING 607ZZ		1				
074	519728-4	ROTOR ASS'Y		1				
D10		INC. 69-73						
075	922117-8	HEX. SOCKET HEAD BOLT M4X12		2				
076	266425-0	TAPPING SCREW 4X45		2				
077	413F42-5	BAFFLE PLATE		1				
078	347976-3	PLATE E		1				

Model No.JR002G CORDLESS RECIPRO SAW

Item	Parts No.	Description	I/C	Qty	New/Old	Opt. 1	Opt. 2	Note
079	629470-0	STATOR		1				
080	413F14-0	MOTOR HOUSING		1				
081	264002-2	SQUARE NUT M5		2				
082	911243-8	PAN HEAD SCREW M5X25		4				
083	183V99-3	HANDLE SET		1				
C10	263002-9	RUBBER PIN 4		4				
C20	263005-3	RUBBER PIN 6		4				
C30	8005T5-8	XGT LOGO LABEL		1				
D10		INC. 89						
084	266326-2	TAPPING SCREW 4X18		6				
085	620H79-9	DIAL CIRCUIT		1				
086	620H77-3	CONTROLLER		1				
087	413F44-1	LOCK OFF BUTTON		1				
088	651439-6	SWITCH C3JR-4B-2		1				
089	183V99-3	HANDLE SET		1				
C10	263002-9	RUBBER PIN 4		4				
C20	263005-3	RUBBER PIN 6		4				
C30	8005T5-8	XGT LOGO LABEL		1				
D10		INC. 83						
090	632R99-1	TERMINAL UNIT		1				
091	8116Y8-8	JR002G SERIAL NO. LABEL		1				
092	8116Y1-2	JR002G NAME PLATE		1				
093	911206-4	PAN HEAD SCREW M5X10		2				
094	122B85-9	HOOK ASSEMBLY		1				
095	8048A6-3	CLEAR LABEL		1				
A01	194253-2	RECIPRO SAW BLADE SET		1				
A02B	821872-8	PLASTIC CASE		1				
C10	162271-8	LATCH		2				
A02C	821872-8	PLASTIC CASE		1				
C10	162271-8	LATCH		2				
A03B	8049V3-2	JR002GD201 PLASTIC CASE LABEL		2				
A04B	***DC40RA	DC40RA FAST CHARGER		1				
D10		COMPO-PARTS						
A04C	***DC40RA	DC40RA FAST CHARGER		1				
D10		COMPO-PARTS						
A05B	191B36-3	BATTERY BL4025 SET		2				
A05C	191B26-6	BATTERY BL4040 SET		2				
A06B	412393-7	BATTERY COVER		1				
A06C	412393-7	BATTERY COVER		2				

Please order the parts with part number.

Print Date 21/12/2021