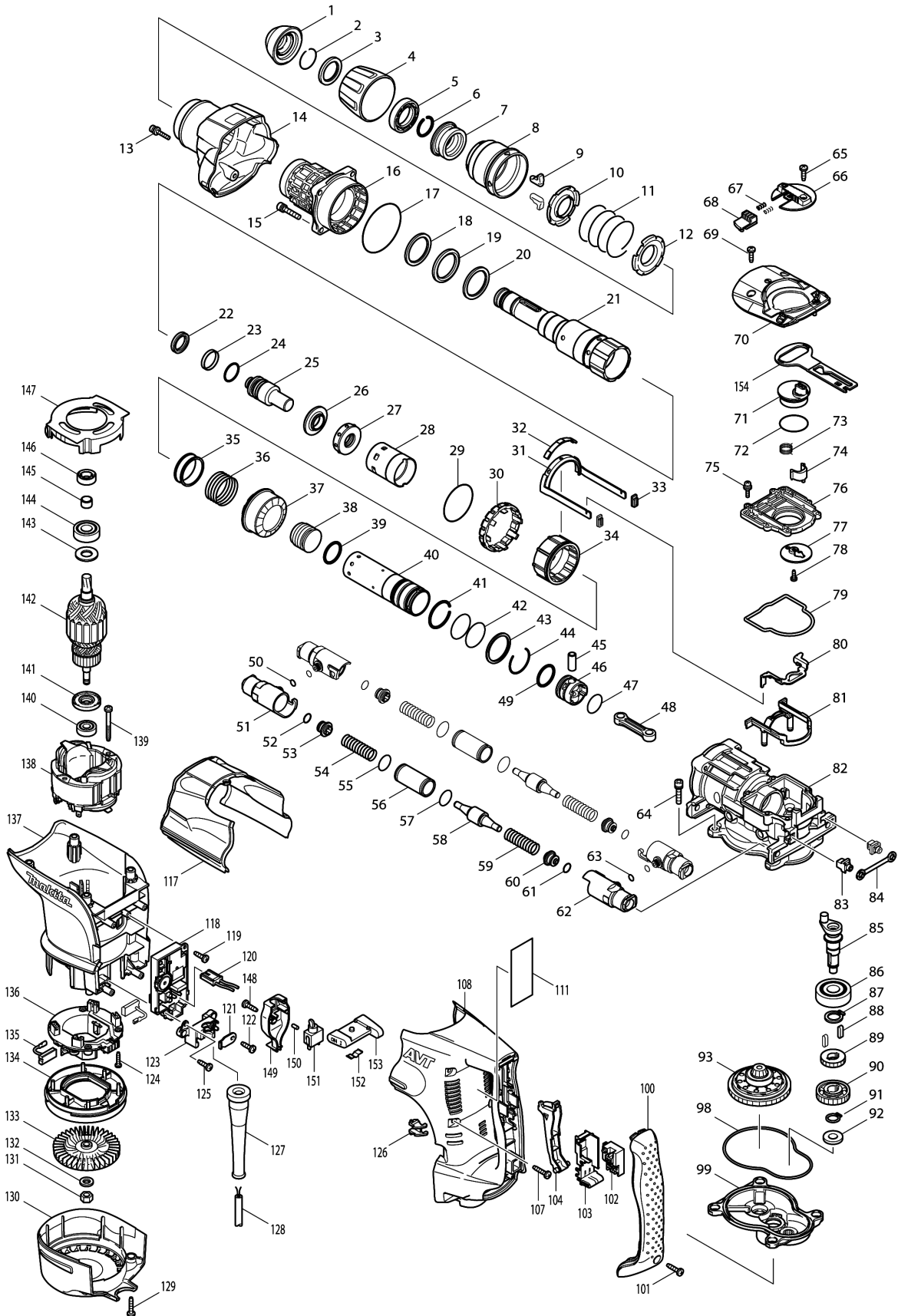


Model No.HR4510C ROTARY HAMMER 45MM



Model No.HR4510C ROTARY HAMMER 45MM

Item	Parts No.	Description	I/C	Qty	New/Old	Opt. 1	Opt. 2	Note
001	286272-3	TOOL HOLDER CAP		1	*			
001-1	286285-4	TOOL HOLDER CAP	<	1				
002	233948-3	RING SPRING 25		1				
003	257280-1	RING 28		1				
004	450064-8	CHUCK COVER		1				
005	419002-9	SPACER		1				
006	233948-3	RING SPRING 25		1				
007	324752-2	CHUCK RING		1				
008	450030-5	RELEASE COVER		1				
009	310178-4	TOOL RETAINER		2				
010	345804-6	SPRING GUIDE		1				
011	233496-2	COMPRESSION SPRING 49		1				
012	345804-6	SPRING GUIDE		1				
013	922148-7	HEX. SOCKET HEAD BOLT M4X25		1				
014	158300-3	BARREL COVER COMPLETE		1				
015	922353-6	HEX.SOCKET HEAD BOLT M6X30		4				
016	158576-2	BARREL COMPLETE		1	*			
C10	213480-3	OIL SEAL 35		1	*			
C20	214507-2	PLANE BEARING 36		1	*			
C30	214601-0	PLANE BEARING 48		1	*			
C40	233964-5	RING SPRING 50		1	*			
016-1	158576-2	BARREL COMPLETE	<	1				
C10	213480-3	OIL SEAL 35		1				
C20	214507-2	PLANE BEARING 36		1				
C30	214601-0	PLANE BEARING 48		1				
C40	233964-5	RING SPRING 50		1				
C50	213604-1	O RING 50		1				
017	213754-2	O RING 71		1				
018	267357-4	FLAT WASHER 36		1				
019	262135-7	RUBBER RING 36		1				
020	267357-4	FLAT WASHER 36		1				
021	324872-2	TOOL HOLDER		1				
022	213980-3	X-RING 21		1				
023	213431-6	FLUORIDE RING 28		1				
024	213394-6	O RING 23		1				
025	324802-3	IMPACT BOLT		1				
026	324805-7	RING 19		1				
027	424032-7	RUBBER RING 20		1				
028	450024-0	SLIDE SLEEVE		1				
029	213656-2	O RING 53		1				
030	450031-3	LOCK SLEEVE		1				

Model No.HR4510C ROTARY HAMMER 45MM

Item	Parts No.	Description	I/C	Qty	New/Old	Opt. 1	Opt. 2	Note
031	165465-4	LINK ARM		1				
032	450032-1	LINK ARM GUIDE		1				
033	424024-6	SEAL PLATE		2				
034	324800-7	DRIVING SLEEVE		1				
035	331599-7	RING 38		1				
036	234024-6	COMPRESSION SPRING 39		1				
037	227526-9	STRAIGHT BEVEL GEAR 35		1				
038	324804-9	STRIKER		1				
039	213981-1	O-RING 27		1				
040	324803-1	CYLINDER 34		1				
041	233956-4	RING SPRING 37		1				
042	213460-9	O RING 35		2				
043	257283-5	RING 38		1				
044	233955-6	RING SPRING 36		1				
045	331598-9	PIPE 10		1				
046	450025-8	PISTON		1				
047	213407-3	O RING 26		1				
048	450026-6	CONNECTING ROD		1				
049	213981-1	O-RING 27		1				
050	213030-4	O RING 8		2				
051	318169-9	PIPE HOLDER		2				
052	213118-0	O RING 12		2				
053	450027-4	SPRING GUIDE		2				
054	234023-8	COMPRESSION SPRING 14		2				
055	213373-4	O RING 22		2				
056	331778-7	PIPE 20		2				
057	213373-4	O RING 22		2				
058	324806-5	COUNTER WEIGHT		2	*			
058-1	324806-5	COUNTER WEIGHT	O	2				
059	234023-8	COMPRESSION SPRING 14		2				
060	450027-4	SPRING GUIDE		2				
061	213118-0	O RING 12		2				
062	318169-9	PIPE HOLDER		2				
063	213030-4	O RING 8		2				
064	922353-6	HEX SOCKET HEAD BOLT M6X30		4				
065	266192-7	TAPPING SCREW 4X14		1				
066	419020-7	CHANGE LEVER		1				
067	233436-0	COMPRESSION SPRING 3		2				
068	419009-5	LOCK BUTTON		1				
069	266192-7	TAPPING SCREW 4X14		2				
070	318171-2	CRANK CAP COVER		1				
071	419784-3	CRANK LEVER		1	*			

Please order the parts with part number.

Print Date 30/3/2020

Model No.HR4510C ROTARY HAMMER 45MM

Item	Parts No.	Description	I/C	Qty	New/Old	Opt. 1	Opt. 2	Note
071-1	450687-2	CRANK LEVER	S	1				
072	213515-0	O RING 36		1	*			
072-1	213534-6	O RING 36	<	1	*			
072-2	213687-1	O RING 36	<	1	*			
072-3	213534-6	O RING 36	O	1	*			
072-4	213515-0	O RING 36	<	1				
073	233506-5	TORSION SPRING 16		1				
074	310207-3	LINK LEVER		1				
075	911133-5	PAN HEAD SCREW M4X18		6				
076	450034-7	CRANK CAP		1	*			
076-1	455525-3	CRANK CAP	<	1				
077	345778-1	RETAINER PLATE		1				
078	266020-6	TAPPING SCREW 4X12		1	*			
078-1	265014-8	+ PAN HEAD SCREW M4X12	S	1				
079	424034-3	SEAL RING		1				
080	345822-4	LINK PLATE		1				
081	450029-0	LINK PLATE GUIDE		1				
082	158297-6	CRANK HOUSING COMPLETE		1				
083	419008-7	FIX GUIDE		2				
084	423345-3	CUSHION PLATE		1				
085	324801-5	CRANK SHAFT		1				
086	211279-0	BALL BEARING 6303LLU		1				
087	961057-5	RETAINING RING S-17		1				
088	254220-0	KEY 5		2				
089	227181-7	SPUR GEAR 19		1				
090	226655-5	HELICAL GEAR 36		1				
091	961054-1	RETAINING RING S-14		1				
092	253180-3	FLAT WASHER 10		1				
093	125415-1	TORQUE LIMITER ASS'Y		1				
098	424033-5	SEAL RING		1				
099	158299-2	GEAR HOUSING COMPLETE		1				
100	419796-6	HANDLE COVER		1				
101	265995-6	TAPPING SCREW 4X18		1				
102	650567-4	SWITCH TG73B-1		1	*			
102-1	650676-9	SWITCH C3PA-1111	<	1				
103	154626-1	SWITCH HOLDER COMPLETE		1				
104	419028-1	SWITCH LEVER		1				
107	266041-8	TAPPING SCREW 5X25		6				
108	450040-2	HANDLE		1				
111	864092-1	HR4510C NAME PLATE		1				
117	450036-3	CRANK HOUSING COVER		1				
118	631751-0	CONTROLLER		1				

Please order the parts with part number.

Print Date 30/3/2020

Model No.HR4510C ROTARY HAMMER 45MM

Item	Parts No.	Description	I/C	Qty	New/Old	Opt. 1	Opt. 2	Note
119	266192-7	TAPPING SCREW 4X14		1	*			
119-1	266901-4	TAPPING SCREW 4X14	<	1				
120	638510-3	LEAD UNIT		1				
121	687169-3	STRAIN RELIEF		1				
122	266192-7	TAPPING SCREW 4X14		1				
123	419024-9	CORD CLAMP BASE		1				
124	265995-6	TAPPING SCREW 4X18		4				
125	266192-7	TAPPING SCREW 4X14		1	*			
125-1	266901-4	TAPPING SCREW 4X14	<	1				
126	419774-6	LENS		1				
127	682560-0	CORD GUARD 10		1				
128	695123-3	POWER SUPPLY CORD 1.5-2-4.0		1	*			
128-1	665638-4	POWER SUPPLY CORD 1.5-2-4.0	O	1	*			
128-2	695123-3	POWER SUPPLY CORD 1.5-2-4.0	O	1				
129	266041-8	TAPPING SCREW 5X25		2				
130	450035-5	REAR COVER		1				
131	252178-7	HEX. NUT M8-12		1				
132	253165-9	FLAT WASHER 8		1				
133	240016-5	FAN 90		1				
134	419782-7	FAN GUIDE		1				
135	194412-8	CARBON BRUSH CB-171		1	*			
135-1	195844-2	CARBON BRUSH CB-175	<	1				
136	638447-4	BRUSH HOLDER UNIT		1	*			
136-1	632D00-2	BRUSH HOLDER UNIT	<	1				
137	450041-0	MOTOR HOUSING		1				
138	636313-9	FIELD 220-240V		1				
139	266046-8	TAPPING SCREW 5X50		2				
140	210059-1	BALL BEARING 6000DDW		1				
141	681642-5	INSULATION WASHER		1				
142	517768-6	ARMATURE ASS'Y 220-240V		1				
D10		INC. 140,141,145						
143	267025-9	FLAT WASHER 15		1				
144	211238-4	BALL BEARING 6202LLU		1				
145	331596-3	SLEEVE 12		1				
146	213231-4	OIL SEAL 15		1				
147	450033-9	BAFFLE PLATE		1				
148	266192-7	TAPPING SCREW 4X14		1				
149	419786-9	SWITCH BOX		1				
150	263027-3	RUBBER PIN 4		1				
151	651418-4	SWITCH ST115A-40		1				
152	232209-8	LEAF SPRING		1				

Please order the parts with part number.

Print Date 30/3/2020

Model No.HR4510C ROTARY HAMMER 45MM

Item	Parts No.	Description	I/C	Qty	New/Old	Opt. 1	Opt. 2	Note
153	154635-0	SLIDE LEVER COMPLETE		1				
154	450042-8	CONTROL PLATE		1				
155	331840-8	SHOULDER SLEEVE 19		1				
156	819362-3	CLEAR LABEL		1				
A01	158131-0	GRIP 36 COMPLETE		1				
A02	158275-6	PLASTIC CARRYING CASE COMPLETE		1	*			
C10	163467-4	LATCH		2	*			
C20	816880-2	INDICATION LABEL		1	*			
A02-1	140823-5	PLASTIC CARRYING CASE COMPLETE	O	1	*			
C10	892399-5	INDICATION LABEL		1	*			
A02-2	140764-5	PLASTIC CARRYING CASE COMPLETE	O	1	*			
C10	892399-5	INDICATION LABEL		1	*			
A02-3	196187-5	PLASTIC CASE SET	O	1				
C10	892399-5	INDICATION LABEL		1				
A03	181573-3	GREASE VESSEL 93G		1	*			
C10	817105-7	CAUTION LABEL		1	*			
A03-1	194683-7	GREASE VESSEL SET	O	1	*			
A03-2	198993-4	GREASE VESSEL SET	<	1				
A04	134890-0	SIDE HANDLE 68 ASS'Y		1				
C10	151769-0	SIDE HANDLE 68 COMPLETE		1				
C20	252640-2	WING NUT M8		1				
C30	265439-6	HEX. BOLT M8X150		1				
C40	417002-3	SIDE HANDLE CAM		2				
C50	417003-1	SIDE HANDLE		1				
A05	443122-7	CLOTH		1				
A06	265701-9	THUMB SCREW M6X14		1				
A07	266163-4	CUP SQUARE NECK BOLT M8X80		1				
A08	321248-4	DEPTH GAUGE		1				
A09	344491-8	GRIP SPRING 68		1				
A10	344492-6	PLATE		1				
A11	416299-1	SIDE GRIP BASE 68		1				
A12	931302-2	HEX. NUT M6		1				
A13	892061-2	HR4510C PLASTIC CASE LABEL		2				

Please order the parts with part number.

Print Date 30/3/2020