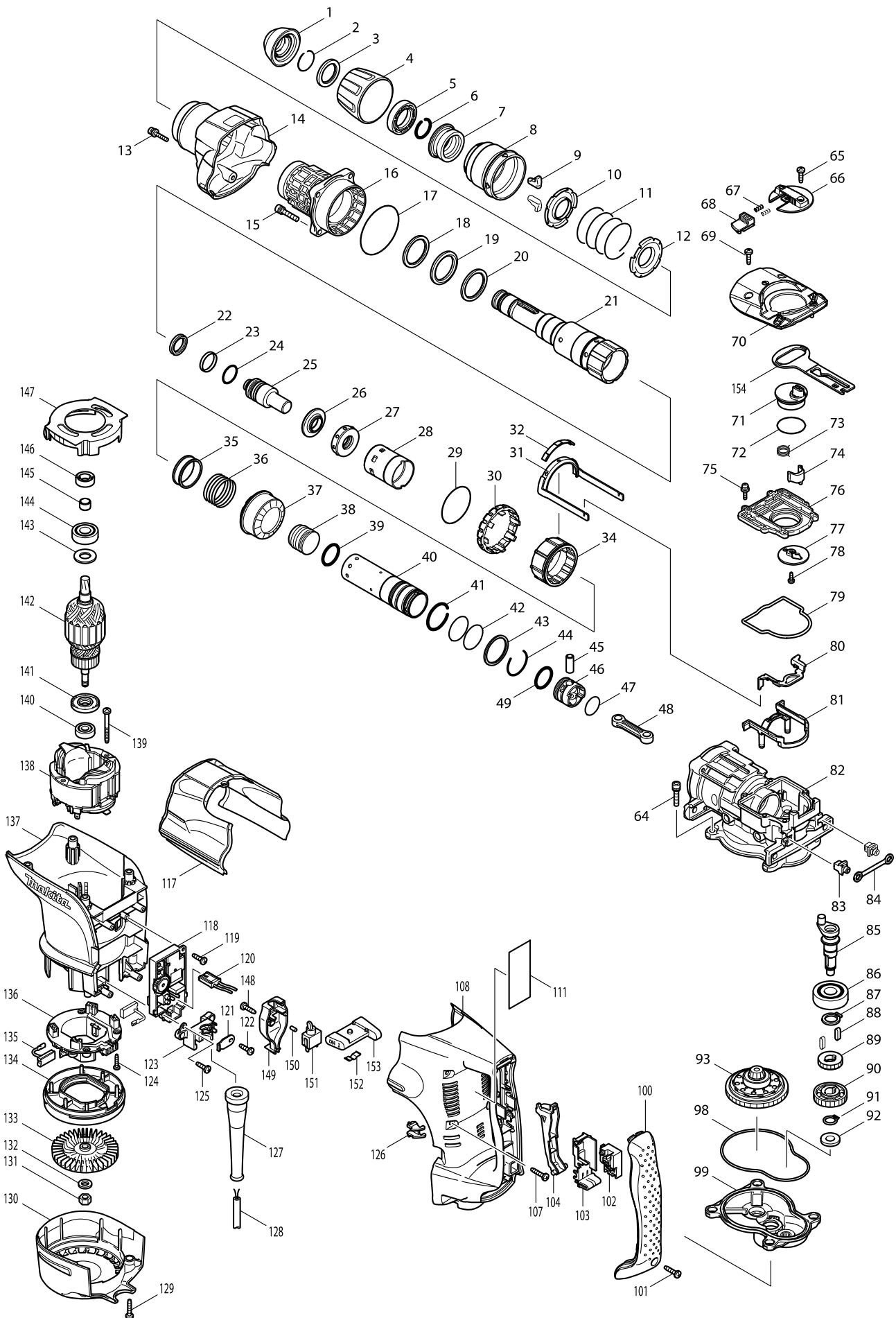


# Model No. HR4501C ROTARY HAMMER 45MM



# Model No. HR4501C ROTARY HAMMER 45MM

| Item  | Parts No. | Description                 | I/C | Qty | N/O | Opt. 1 | Opt. 2 | Note |
|-------|-----------|-----------------------------|-----|-----|-----|--------|--------|------|
| 001   | 286272-3  | TOOL HOLDER CAP             |     | 1   | *   |        |        |      |
| 001-1 | 286285-4  | TOOL HOLDER CAP             | <   | 1   |     |        |        |      |
| 002   | 233948-3  | RING SPRING 25              |     | 1   |     |        |        |      |
| 003   | 257280-1  | RING 28                     |     | 1   |     |        |        |      |
| 004   | 450064-8  | CHUCK COVER                 |     | 1   |     |        |        |      |
| 005   | 419002-9  | SPACER                      |     | 1   |     |        |        |      |
| 006   | 233948-3  | RING SPRING 25              |     | 1   |     |        |        |      |
| 007   | 324752-2  | CHUCK RING                  |     | 1   |     |        |        |      |
| 008   | 450030-5  | RELEASE COVER               |     | 1   |     |        |        |      |
| 009   | 310178-4  | TOOL RETAINER               |     | 2   |     |        |        |      |
| 010   | 345804-6  | SPRING GUIDE                |     | 1   |     |        |        |      |
| 011   | 233496-2  | COMPRESSION SPRING 49       |     | 1   |     |        |        |      |
| 012   | 345804-6  | SPRING GUIDE                |     | 1   |     |        |        |      |
| 013   | 922148-7  | HEX. SOCKET HEAD BOLT M4X25 |     | 1   |     |        |        |      |
| 014   | 158301-1  | BARREL COVER COMPLETE       |     | 1   |     |        |        |      |
| 015   | 922353-6  | HEX.SOCKET HEAD BOLT M6X30  |     | 4   |     |        |        |      |
| 016   | 158576-2  | BARREL COMPLETE             |     | 1   | *   |        |        |      |
| C10   | 213480-3  | OIL SEAL 35                 |     | 1   | *   |        |        |      |
| C20   | 214507-2  | PLANE BEARING 36            |     | 1   | *   |        |        |      |
| C30   | 214601-0  | PLANE BEARING 48            |     | 1   | *   |        |        |      |
| C40   | 233964-5  | RING SPRING 50              |     | 1   | *   |        |        |      |
| 016-1 | 158576-2  | BARREL COMPLETE             | <   | 1   |     |        |        |      |
| C10   | 213480-3  | OIL SEAL 35                 |     | 1   |     |        |        |      |
| C20   | 214507-2  | PLANE BEARING 36            |     | 1   |     |        |        |      |
| C30   | 214601-0  | PLANE BEARING 48            |     | 1   |     |        |        |      |
| C40   | 233964-5  | RING SPRING 50              |     | 1   |     |        |        |      |
| C50   | 213604-1  | O RING 50                   |     | 1   |     |        |        |      |
| 017   | 213754-2  | O RING 71                   |     | 1   |     |        |        |      |
| 018   | 267357-4  | FLAT WASHER 36              |     | 1   |     |        |        |      |
| 019   | 262135-7  | RUBBER RING 36              |     | 1   |     |        |        |      |
| 020   | 267357-4  | FLAT WASHER 36              |     | 1   |     |        |        |      |
| 021   | 324872-2  | TOOL HOLDER                 |     | 1   |     |        |        |      |
| 022   | 213980-3  | X-RING 21                   |     | 1   |     |        |        |      |
| 023   | 213431-6  | FLUORIDE RING 28            |     | 1   |     |        |        |      |
| 024   | 213394-6  | O RING 23                   |     | 1   |     |        |        |      |
| 025   | 324802-3  | IMPACT BOLT                 |     | 1   |     |        |        |      |
| 026   | 324805-7  | RING 19                     |     | 1   |     |        |        |      |
| 027   | 424032-7  | RUBBER RING 20              |     | 1   |     |        |        |      |
| 028   | 450024-0  | SLIDE SLEEVE                |     | 1   |     |        |        |      |
| 029   | 213656-2  | O RING 53                   |     | 1   |     |        |        |      |
| 030   | 450031-3  | LOCK SLEEVE                 |     | 1   |     |        |        |      |
| 031   | 165465-4  | LINK ARM                    |     | 1   |     |        |        |      |
| 032   | 450032-1  | LINK ARM GUIDE              |     | 1   |     |        |        |      |
| 034   | 324800-7  | DRIVING SLEEVE              |     | 1   |     |        |        |      |
| 035   | 331599-7  | RING 38                     |     | 1   |     |        |        |      |
| 036   | 234024-6  | COMPRESSION SPRING 39       |     | 1   |     |        |        |      |
| 037   | 227526-9  | STRAIGHT BEVEL GEAR 35      |     | 1   |     |        |        |      |
| 038   | 324804-9  | STRIKER                     |     | 1   |     |        |        |      |

# Model No. HR4501C ROTARY HAMMER 45MM

| Item  | Parts No. | Description                | I/C | Qty | N/O | Opt. 1 | Opt. 2 | Note |
|-------|-----------|----------------------------|-----|-----|-----|--------|--------|------|
| 039   | 213981-1  | O-RING 27                  |     | 1   |     |        |        |      |
| 040   | 324803-1  | CYLINDER 34                |     | 1   |     |        |        |      |
| 041   | 233956-4  | RING SPRING 37             |     | 1   |     |        |        |      |
| 042   | 213460-9  | O RING 35                  |     | 2   |     |        |        |      |
| 043   | 257283-5  | RING 38                    |     | 1   |     |        |        |      |
| 044   | 233955-6  | RING SPRING 36             |     | 1   |     |        |        |      |
| 045   | 331598-9  | PIPE 10                    |     | 1   |     |        |        |      |
| 046   | 450025-8  | PISTON                     |     | 1   |     |        |        |      |
| 047   | 213407-3  | O RING 26                  |     | 1   |     |        |        |      |
| 048   | 450026-6  | CONECTING ROD              |     | 1   |     |        |        |      |
| 049   | 213981-1  | O-RING 27                  |     | 1   |     |        |        |      |
| 064   | 922353-6  | HEX.SOCKET HEAD BOLT M6X30 |     | 4   |     |        |        |      |
| 065   | 266192-7  | TAPPING SCREW 4X14         |     | 1   |     |        |        |      |
| 066   | 419020-7  | CHANGE LEVER               |     | 1   |     |        |        |      |
| 067   | 233436-0  | COMPRESSION SPRING 3       |     | 2   |     |        |        |      |
| 068   | 419009-5  | LOCK BUTTON                |     | 1   |     |        |        |      |
| 069   | 266192-7  | TAPPING SCREW 4X14         |     | 2   |     |        |        |      |
| 070   | 318171-2  | CRANK CAP COVER            |     | 1   |     |        |        |      |
| 071   | 419784-3  | CRANK LEVER                |     | 1   | *   |        |        |      |
| 071-1 | 450687-2  | CRANK LEVER                | S   | 1   |     |        |        |      |
| 072   | 213515-0  | O RING 36                  |     | 1   | *   |        |        |      |
| 072-1 | 213534-6  | O RING 36                  | <   | 1   | *   |        |        |      |
| 072-2 | 213687-1  | O RING 36                  | <   | 1   | *   |        |        |      |
| 072-3 | 213534-6  | O RING 36                  | O   | 1   |     |        |        |      |
| 073   | 233506-5  | TORSION SPRING 16          |     | 1   |     |        |        |      |
| 074   | 310207-3  | LINK LEVER                 |     | 1   |     |        |        |      |
| 075   | 911133-5  | PAN HEAD SCREW M4X18       |     | 6   |     |        |        |      |
| 076   | 450034-7  | CRANK CAP                  |     | 1   | *   |        |        |      |
| 076-1 | 455525-3  | CRANK CAP                  | <   | 1   |     |        |        |      |
| 077   | 345778-1  | RETAINER PLATE             |     | 1   |     |        |        |      |
| 078   | 266020-6  | TAPPING SCREW 4X12         |     | 1   | *   |        |        |      |
| 078-1 | 265014-8  | + PAN HEAD SCREW M4X12     | S   | 1   |     |        |        |      |
| 079   | 424034-3  | SEAL RING                  |     | 1   |     |        |        |      |
| 080   | 345822-4  | LINK PLATE                 |     | 1   |     |        |        |      |
| 081   | 450029-0  | LINK PLATE GUIDE           |     | 1   |     |        |        |      |
| 082   | 158298-4  | CRANK HOUSING COMPLETE     |     | 1   |     |        |        |      |
| 083   | 419008-7  | FIX GUIDE                  |     | 2   |     |        |        |      |
| 084   | 423345-3  | CUSHION PLATE              |     | 1   |     |        |        |      |
| 085   | 324801-5  | CRANK SHAFT                |     | 1   |     |        |        |      |
| 086   | 211279-0  | BALL BEARING 6303LLU       |     | 1   |     |        |        |      |
| 087   | 961057-5  | RETAINING RING S-17        |     | 1   |     |        |        |      |
| 088   | 254220-0  | KEY 5                      |     | 2   |     |        |        |      |
| 089   | 227181-7  | SPUR GEAR 19               |     | 1   |     |        |        |      |
| 090   | 226655-5  | HELICAL GEAR 36            |     | 1   |     |        |        |      |
| 091   | 961054-1  | RETAINING RING S-14        |     | 1   |     |        |        |      |
| 092   | 253180-3  | FLAT WASHER 10             |     | 1   |     |        |        |      |
| 093   | 125415-1  | TORQUE LIMITER ASS'Y       |     | 1   |     |        |        |      |
| 098   | 424033-5  | SEAL RING                  |     | 1   |     |        |        |      |

# Model No. HR4501C ROTARY HAMMER 45MM

| Item  | Parts No. | Description                 | I/C | Qty | N/O | Opt. 1 | Opt. 2 | Note |
|-------|-----------|-----------------------------|-----|-----|-----|--------|--------|------|
| 099   | 158299-2  | GEAR HOUSING COMPLETE       |     | 1   |     |        |        |      |
| 100   | 419796-6  | HANDLE COVER                |     | 1   |     |        |        |      |
| 101   | 265995-6  | TAPPING SCREW 4X18          |     | 1   |     |        |        |      |
| 102   | 650567-4  | SWITCH TG73B-1              |     | 1   | *   |        |        |      |
| 102-1 | 650676-9  | SWITCH C3PA-1111            | <   | 1   |     |        |        |      |
| 103   | 154626-1  | SWITCH HOLDER COMPLETE      |     | 1   |     |        |        |      |
| 104   | 419028-1  | SWITCH LEVER                |     | 1   |     |        |        |      |
| 107   | 266041-8  | TAPPING SCREW 5X25          |     | 6   |     |        |        |      |
| 108   | 450039-7  | HANDLE                      |     | 1   |     |        |        |      |
| 111   | 864088-2  | HR4501C NAME PLATE          |     | 1   |     |        |        |      |
| 117   | 450037-1  | CRANK HOUSING COVER         |     | 1   |     |        |        |      |
| 118   | 631751-0  | CONTROLLER                  |     | 1   |     |        |        |      |
| 119   | 266192-7  | TAPPING SCREW 4X14          |     | 1   | *   |        |        |      |
| 119-1 | 266901-4  | TAPPING SCREW 4X14          | <   | 1   |     |        |        |      |
| 120   | 638510-3  | LEAD UNIT                   |     | 1   |     |        |        |      |
| 121   | 687169-3  | STRAIN RELIEF               |     | 1   |     |        |        |      |
| 122   | 266192-7  | TAPPING SCREW 4X14          |     | 1   |     |        |        |      |
| 123   | 419024-9  | CORD CLAMP BASE             |     | 1   |     |        |        |      |
| 124   | 265995-6  | TAPPING SCREW 4X18          |     | 4   |     |        |        |      |
| 125   | 266192-7  | TAPPING SCREW 4X14          |     | 1   | *   |        |        |      |
| 125-1 | 266901-4  | TAPPING SCREW 4X14          | <   | 1   |     |        |        |      |
| 126   | 419774-6  | LENS                        |     | 1   |     |        |        |      |
| 127   | 682560-0  | CORD GUARD 10               |     | 1   |     |        |        |      |
| 128   | 695123-3  | POWER SUPPLY CORD 1.5-2-4.0 |     | 1   | *   |        |        |      |
| 128-1 | 665638-4  | POWER SUPPLY CORD 1.5-2-4.0 | O   | 1   | *   |        |        |      |
| 128-2 | 695123-3  | POWER SUPPLY CORD 1.5-2-4.0 | O   | 1   |     |        |        |      |
| 129   | 266041-8  | TAPPING SCREW 5X25          |     | 2   |     |        |        |      |
| 130   | 450035-5  | REAR COVER                  |     | 1   |     |        |        |      |
| 131   | 252178-7  | HEX. NUT M8-12              |     | 1   |     |        |        |      |
| 132   | 253165-9  | FLAT WASHER 8               |     | 1   |     |        |        |      |
| 133   | 240016-5  | FAN 90                      |     | 1   |     |        |        |      |
| 134   | 419782-7  | FAN GUIDE                   |     | 1   |     |        |        |      |
| 135   | 194412-8  | CARBON BRUSH CB-171         |     | 1   | *   |        |        |      |
| 135-1 | 195844-2  | CARBON BRUSH CB-175         | <   | 1   |     |        |        |      |
| 136   | 638447-4  | BRUSH HOLDER UNIT           |     | 1   | *   |        |        |      |
| 136-1 | 632D00-2  | BRUSH HOLDER UNIT           | <   | 1   |     |        |        |      |
| 137   | 450041-0  | MOTOR HOUSING               |     | 1   |     |        |        |      |
| 138   | 636313-9  | FIELD 220-240V              |     | 1   |     |        |        |      |
| 139   | 266046-8  | TAPPING SCREW 5X50          |     | 2   |     |        |        |      |
| 140   | 210059-1  | BALL BEARING 6000DDW        |     | 1   |     |        |        |      |
| 141   | 681642-5  | INSULATION WASHER           |     | 1   |     |        |        |      |
| 142   | 517768-6  | ARMATURE ASS'Y 220-240V     |     | 1   |     |        |        |      |
| D10   |           | INC. 140,141,145            |     |     |     |        |        |      |
| 143   | 267025-9  | FLAT WASHER 15              |     | 1   |     |        |        |      |
| 144   | 211238-4  | BALL BEARING 6202LLU        |     | 1   |     |        |        |      |
| 145   | 331596-3  | SLEEVE 12                   |     | 1   |     |        |        |      |
| 146   | 213231-4  | OIL SEAL 15                 |     | 1   |     |        |        |      |
| 147   | 450033-9  | BAFFLE PLATE                |     | 1   |     |        |        |      |

**Model No. HR4501C ROTARY HAMMER 45MM**

| Item  | Parts No. | Description                    | I/C | Qty | N/O | Opt. 1 | Opt. 2 | Note |
|-------|-----------|--------------------------------|-----|-----|-----|--------|--------|------|
| 148   | 266192-7  | TAPPING SCREW 4X14             |     | 1   |     |        |        |      |
| 149   | 419786-9  | SWITCH BOX                     |     | 1   |     |        |        |      |
| 150   | 263027-3  | RUBBER PIN 4                   |     | 1   |     |        |        |      |
| 151   | 651418-4  | SWITCH ST115A-40               |     | 1   |     |        |        |      |
| 152   | 232209-8  | LEAF SPRING                    |     | 1   |     |        |        |      |
| 153   | 154635-0  | SLIDE LEVER COMPLETE           |     | 1   |     |        |        |      |
| 154   | 450042-8  | CONTROL PLATE                  |     | 1   |     |        |        |      |
| 155   | 331840-8  | SHOULDER SLEEVE 19             |     | 1   |     |        |        |      |
| 156   | 819362-3  | CLEAR LABEL                    |     | 1   |     |        |        |      |
| A01   | 158131-0  | GRIP 36 COMPLETE               |     | 1   |     |        |        |      |
| A02   | 158274-8  | PLASTIC CARRYING CASE COMPLETE |     | 1   | *   |        |        |      |
| C10   | 163467-4  | LATCH                          |     | 2   | *   |        |        |      |
| C20   | 816880-2  | INDICATION LABEL               |     | 1   | *   |        |        |      |
| A02-1 | 140822-7  | PLASTIC CARRYING CASE COMPLETE | O   | 1   | *   |        |        |      |
| C10   | 892399-5  | INDICATION LABEL               |     | 1   | *   |        |        |      |
| A02-2 | 140763-7  | PLASTIC CARRYING CASE COMPLETE | O   | 1   | *   |        |        |      |
| C10   | 892399-5  | INDICATION LABEL               |     | 1   | *   |        |        |      |
| A02-3 | 196186-7  | PLASTIC CASE SET               | O   | 1   |     |        |        |      |
| C10   | 892399-5  | INDICATION LABEL               |     | 1   |     |        |        |      |
| A03   | 181573-3  | GREASE VESSEL 93G              |     | 1   | *   |        |        |      |
| C10   | 817105-7  | CAUTION LABEL                  |     | 1   | *   |        |        |      |
| A03-1 | 194683-7  | GREASE VESSEL SET              | O   | 1   |     |        |        |      |
| A04   | 134890-0  | SIDE HANDLE 68 ASS'Y           |     | 1   |     |        |        |      |
| C10   | 151769-0  | SIDE HANDLE 68 COMPLETE        |     | 1   |     |        |        |      |
| C20   | 252640-2  | WING NUT M8                    |     | 1   |     |        |        |      |
| C30   | 265439-6  | HEX. BOLT M8X150               |     | 1   |     |        |        |      |
| C40   | 417002-3  | SIDE HANDLE CAM                |     | 2   |     |        |        |      |
| C50   | 417003-1  | SIDE HANDLE                    |     | 1   |     |        |        |      |
| A05   | 443122-7  | CLOTH                          |     | 1   |     |        |        |      |
| A06   | 265701-9  | SCREW M6X14                    |     | 1   |     |        |        |      |
| A07   | 266163-4  | CUP SQUARE NECK BOLT M8X80     |     | 1   |     |        |        |      |
| A08   | 321248-4  | DEPTH GAUGE                    |     | 1   |     |        |        |      |
| A09   | 344491-8  | GRIP SPRING 68                 |     | 1   |     |        |        |      |
| A10   | 344492-6  | PLATE                          |     | 1   |     |        |        |      |
| A11   | 416299-1  | SIDE GRIP BASE 68              |     | 1   |     |        |        |      |
| A12   | 931302-2  | HEX. NUT M6                    |     | 1   |     |        |        |      |
| A14   | 892060-4  | HR4501C PLASTIC CASE LABEL     |     | 2   |     |        |        |      |
|       |           |                                |     |     |     |        |        |      |
|       |           |                                |     |     |     |        |        |      |
|       |           |                                |     |     |     |        |        |      |
|       |           |                                |     |     |     |        |        |      |
|       |           |                                |     |     |     |        |        |      |
|       |           |                                |     |     |     |        |        |      |
|       |           |                                |     |     |     |        |        |      |
|       |           |                                |     |     |     |        |        |      |
|       |           |                                |     |     |     |        |        |      |
|       |           |                                |     |     |     |        |        |      |
|       |           |                                |     |     |     |        |        |      |
|       |           |                                |     |     |     |        |        |      |
|       |           |                                |     |     |     |        |        |      |
|       |           |                                |     |     |     |        |        |      |
|       |           |                                |     |     |     |        |        |      |
|       |           |                                |     |     |     |        |        |      |
|       |           |                                |     |     |     |        |        |      |