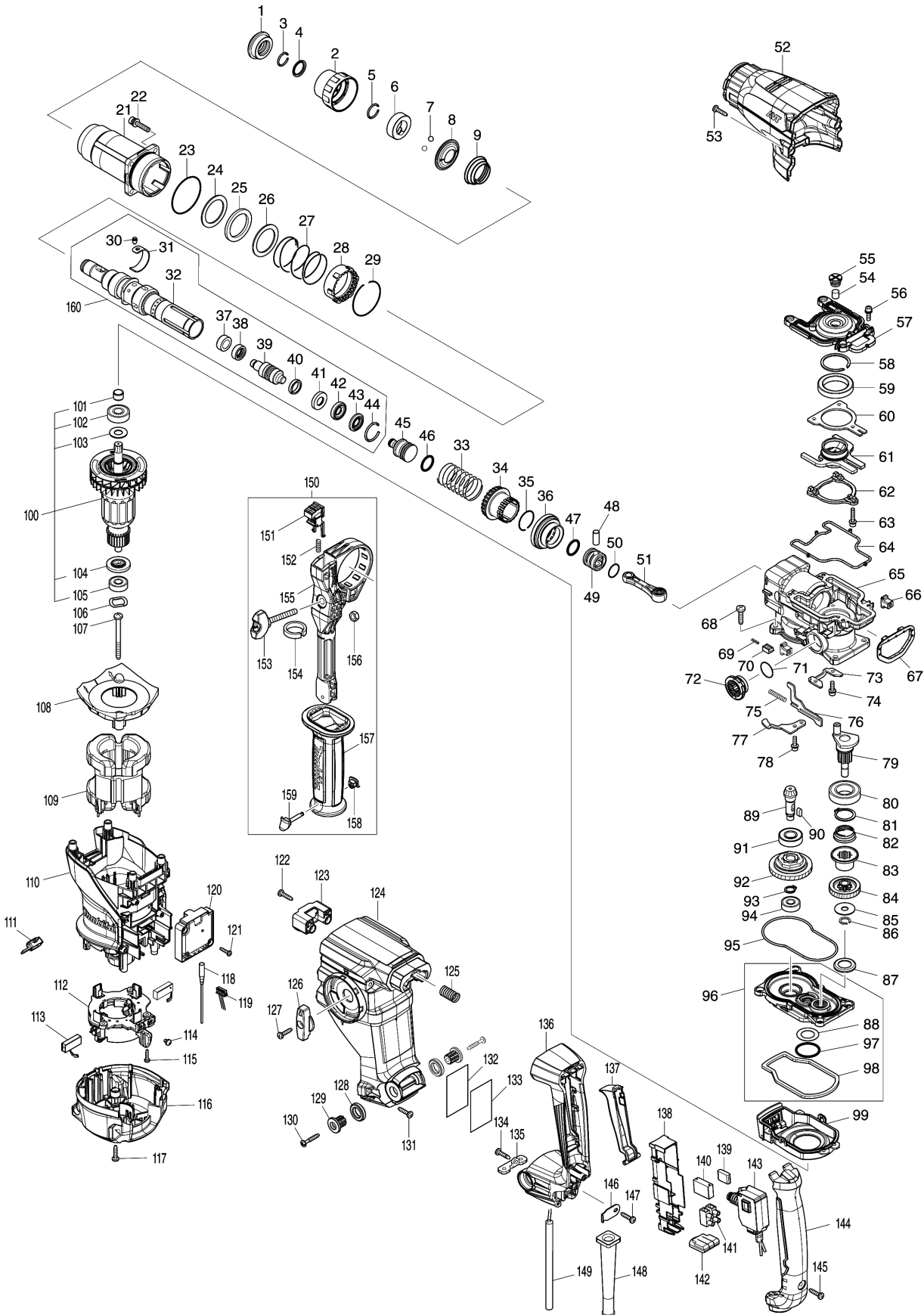


Model No.HR3011FC 30MM COMBINATION HAMMER



Model No.HR3011FC 30MM COMBINATION HAMMER

Item	Parts No.	Description	I/C	Qty	New/Old	Opt. 1	Opt. 2	Note
001	286288-8	CAP 35		1				
002	459685-3	CHUCK COVER		1				
003	233989-9	RING SPRING 14		1				
004	346834-0	WASHER 16		1				
005	233992-0	RING SPRING 15		1				
006	327269-4	RING 17		1				
007	216022-2	STEEL BALL 7.0		2				
008	347553-1	GUIDE WASHER		1				
009	232503-8	CONICAL COMP. SPRING 21-34		1				
021	140J35-0	BARREL COMPLETE		1				
C10	213636-8	OIL SEAL 25		1				
022	266793-1	HEX. S.H.B. M5X25 WITH WR		4				
023	213620-3	O RING 46		1				
024	267354-0	FLAT WASHER 31		1				
025	422493-5	RUBBER RING 31		1				
026	267354-0	FLAT WASHER 31		1				
027	232496-9	COMPRESSION SPRING 37		1				
028	419986-1	LOCK SLEEVE		1				
029	233952-2	RING SPRING 41		1				
030	256598-7	SHOULDER PIN 4		1				
031	347501-0	LEAF SPRING		1				
032	327277-5	TOOL HOLDER		1				
033	232497-7	COMPRESSION SPRING 27		1				
034	327276-7	DRIVING SLEEVE		1				
035	232501-2	RING SPRING 24		1				
036	226868-8	SPIRAL BEVEL GEAR 31		1				
037	327515-5	SLEEVE 11		1				
038	327516-3	RING 11		1				
039	140S89-1	IMPACT BOLT A COMPLETE		1				
040	213880-7	SEAL RING 12		1				
041	327268-6	RING 11		1				
042	424267-0	CUSHION RING 12		1				
043	327271-7	WASHER 11		1				
044	231987-7	RING SPRING 21		1				
045	327266-0	STRIKER		1				
046	213881-5	O RING 16		1				
047	213881-5	O RING 16		1				
048	268122-4	PIN 7		1				
049	319807-6	PISTON		1				
050	213226-7	O RING 16		1				
051	140J36-8	CONNECTING ROD COMPLETE		1				
052	459167-5	BARREL COVER		1				

Please order the parts with part number.

Print Date 1/9/2020

Model No.HR3011FC 30MM COMBINATION HAMMER

Item	Parts No.	Description	I/C	Qty	New/Old	Opt. 1	Opt. 2	Note
053	266326-2	TAPPING SCREW 4X18		2				
054	443153-6	FELT		1				
055	459180-3	FILTER CAP		1				
056	922123-3	HEX. SOCKET HEAD BOLT M4X14		4				
057	319802-6	CRANK CAP		1				
058	961140-8	RETAINING RING		1				
059	211423-9	BALL BEARING 6806DDW		1				
060	347500-2	BEARING RETAINER B		1				
061	140J31-8	COUNTER WEIGHT COMPLETE		1				
062	310927-9	WEIGHT RETAINER		1				
063	266948-8	HEX S. H. BOLT M4X20 WITH WR		3				
064	459182-9	SEAL RING B		1				
065	140J33-4	CRANK HOUSING COMPLETE		1				
066	455165-7	FIX GUIDE		2				
067	422492-7	CUSHION		1				
068	266420-0	TAPPING SCREW 5X20		4				
069	232499-3	COMPRESSION SPRING 2		1				
070	310929-5	PUSH CORN		1				
071	213262-3	O RING 18		1				
072	459175-6	LINK LEVER		1				
073	347497-5	BEARING RETAINER A		1				
074	922123-3	HEX. SOCKET HEAD BOLT M4X14		2				
075	234019-9	COMPRESSION SPRING 4		1				
076	345814-3	LINK PLATE		1				
077	347498-3	GUIDE PLATE		1				
078	922123-3	HEX. SOCKET HEAD BOLT M4X14		1				
079	140M22-7	CRANK SHAFT COMPLETE		1				
080	211323-3	BALL BEARING 6904LLU		1				
081	961060-6	RETAINING RING S-20		1				
082	232498-5	CONICAL COMP. SPRING 21- 26		1				
083	327273-3	CLUTCH		1				
084	226869-6	HELICAL GEAR 31		1				
085	267353-2	FLAT WASHER 8		1				
086	961034-7	RETAINING RING		1				
087	345818-5	CUP WASHER 16		1				
088	253749-3	FLAT WASHER 16		1				
089	226867-0	SPIRAL BEVEL GEAR 8		1				
090	254239-9	KEY 4		1				
091	211131-2	BALL BEARING 6001DDW		1				
092	125386-2	TORQUE LIMITER ASS'Y		1				

Model No.HR3011FC 30MM COMBINATION HAMMER

Item	Parts No.	Description	I/C	Qty	New/Old	Opt. 1	Opt. 2	Note
093	961006-2	RETAINING RING S-10		1				
094	210005-4	BALL BEARING 608DDW		1				
095	459181-1	SEAL RING A		1				
096	136330-4	GEAR HOUSING ASS'Y		1				
D10		INC. 88,97,98						
097	213445-5	O-RING 26		1				
098	459183-7	SPONGE SHEET		1				
099	140J32-6	AIR DUCT COMPLETE		1				
100	515448-8	ARMATURE ASS'Y 220-240V		1				
D10		INC. 101-105						
101	331775-3	SLEEVE 10		1				
102	211097-6	BALL BEARING 6000LLB		1				
103	253171-4	FLAT WASHER 10		1				
104	681644-1	INSULATION WASHER		1				
105	210005-4	BALL BEARING 608DDW		1				
106	267804-5	WAVE WASHER 15		1				
107	266329-6	TAPPING SCREW 5X60		2				
108	459172-2	BAFFLE PLATE		1				
109	621899-6	FIELD		1				
110	459158-6	MOTOR HOUSING		1				
111	620C43-0	LED CIRCUIT		1				
112	632N59-9	BRUSH HOLDER UNIT		1				
113	197245-0	CARBON BRUSH CB-351		1				
114	652044-2	+BIND SCREW M3.5X5.0		2				
115	266404-8	TAPPING SCREW BIND 3X14		3				
116	459169-1	REAR COVER		1				
117	266326-2	TAPPING SCREW 4X18		4				
118	632P88-4	LEAD UNIT		1				
119	632P89-2	LEAD UNIT		1				
120	620C41-4	CONTROLLER		1				
121	266404-8	TAPPING SCREW BIND 3X14		2				
122	266326-2	TAPPING SCREW 4X18		2				
123	140M21-9	HANDLE STOPPER COMPLETE		1				
C10	263005-3	RUBBER PIN 6		2				
124	459161-7	HANDLE BASE		1				
125	232500-4	COMPRESSION SPRING 10		1				
126	459174-8	CHANGE LEVER		1				
127	266326-2	TAPPING SCREW 4X18		1				
128	459184-5	CUSHION RING 12		2				
129	459176-4	SHOULDER SLEEVE 5		2				
130	266459-3	TAPPING SCREW 5X25		2				
131	266326-2	TAPPING SCREW 4X18		4				

Please order the parts with part number.

Print Date 1/9/2020

Model No.HR3011FC 30MM COMBINATION HAMMER

Item	Parts No.	Description	I/C	Qty	New/Old	Opt. 1	Opt. 2	Note
132	856V77-3	HR3011FC NAME PLATE		1				
133	818U61-0	CLEAR LABEL		1				
134	266326-2	TAPPING SCREW 4X18		1				
135	347502-8	LOCK PLATE		1				
136	459164-1	HANDLE		1				
137	459177-2	SWITCH LEVER		1				
138	459178-0	SWITCH HOLDER		1				
139	646755-9	RESISTOR		1				
140	645190-8	NOISE SUPPRESSOR		1				
141	654531-7	TERMINAL BLOCK 2P		1				
142	424031-9	SPONGE SHEET		1				
143	651385-3	SWITCH C3JW-A1B-PA7		1				
144	459166-7	HANDLE COVER		1				
145	266326-2	TAPPING SCREW 4X18		1				
146	687169-3	STRAIN RELIEF		1				
147	266326-2	TAPPING SCREW 4X18		1				
148	682573-1	CORD GUARD 10		1				
149	665890-4	POWER SUPPLY CORD 1.0-2-4.0		1				
150	126882-3	GRIP ASSEMBLY		1				
D10		INC. 151-159						
151	144959-2	LOCK BUTTON COMPLETE		1				
152	233360-7	COMPRESSION SPRING 4		1				
153	265625-9	THUMB SCREW M6X50		1				
154	422258-5	SPONGE SHEET		1				
155	458355-1	SIDE HANDLE BASE		1				
156	931302-2	HEX. NUT M6		1				
157	458357-7	GRIP 36		1				
158	422255-1	CAP		1				
159	161838-9	FIX PIN		1				
160	136312-6	TOOL HOLDER ASS'Y		1	*			
D10		INC. 30-32,39-44			*			
160-1	136312-6	TOOL HOLDER ASS'Y	<	1				
D10		INC. 30-32,37-44						
A02	331886-4	DEPTH GAUGE		1				
A03	8012G4-4	HR3011FCWJ INDICATION LABEL		1				
A04	8012G5-2	HR3011FCWJ PLASTIC CASE LABEL		2				
A05	821552-6	CONNECTOR PLASTIC CASE (TYPE4)		1				
C10	453974-8	LATCH		4				
A06	835B25-5	INNER TRAY		1				
A07	***DX10	DUST COLLECTION SYSTEM SET		1				

Model No.HR3011FC 30MM COMBINATION HAMMER

Item	Parts No.	Description	I/C	Qty	New/Old	Opt. 1	Opt. 2	Note
C10	459206-1	SEALING CAP		5				
D10		COMPO-PARTS						

Please order the parts with part number.

Print Date 1/9/2020