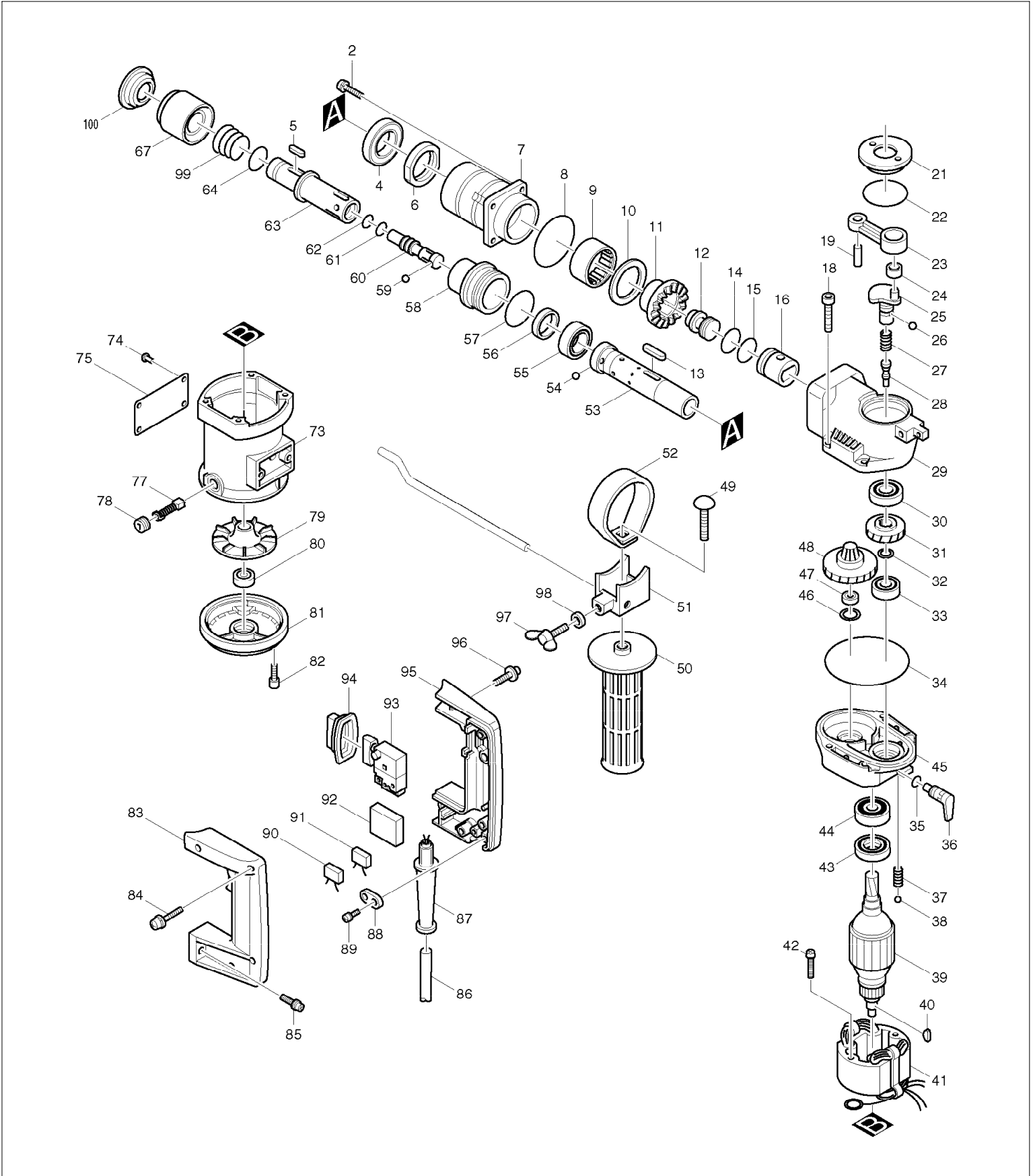


SERVICE DRAWING

MODEL NO. HR2510



SPARE PARTS LIST

MODEL NO. HR2510

ITEM	PART NO.	DESCRIPTION	QTY	NOTE
002	922341-3	HEX. SOCKET HEAD BOLT M6X25	4	
004	211441-7	BALL BEARING 3009	1	
005	322255-0	ROLLER 6.5	2	
006	252214-9	NUT M30.3-36	1	
007	315606-4	BARREL	1	
008	213606-7	O RING 48	1	
009	212455-9	NEEDLE BEARING 3516	1	
010	253802-5	FLAT WASHER 35	1	
011	221333-2	SPIRAL BEVEL GEAR 33	1	
012	322505-3	STRIKER	1	
013	254231-5	KEY 4	1	
014	213308-5	O RING 19	1	
015	213308-5	O RING 19	1	
016	321685-2	PISTON	1	
018	922366-7	HEX. SOCKET HEAD BOLT M6X45	4	
019	256099-5	PIN 6	1	
021	*****	*****	***	*****
022	213554-0	O RING 44	1	
023	315146-2	ROD	1	
024	212025-4	NEEDLE BEARING 810	1	
025	321615-3	CRANK SHAFT	1	
026	216011-7	STEEL BALL 5.6	2	
027	231327-9	COMPRESSION SPRING 6	1	
028	321618-7	CHANGE PIN 8	1	
029	159504-0	CRANK HOUSING	1	
030	211204-1	BALL BEARING 6002	1	
031	221719-0	HELICAL GEAR 36	1	
032	253147-1	FLAT WASHER 15	1	
033	211221-1	BALL BEARING 6902	1	
034	213806-9	O RING 90	1	
035	213011-8	O RING 7	1	
036	321614-5	CHANGE LEVER	1	
037	231328-7	COMPRESSION SPRING 2	1	
038	216008-6	STEEL BALL 4	1	
039	612798-3	ARMATURE 220V	1	220V
040	254031-3	WOODRUFF KEY 3	1	
041	528722-5	FIELD ASS'Y 220V	1	220V
042	265347-1	+ HEX. BOLT M5X45	2	
043	213157-0	OIL SEAL 13	1	
044	211069-1	BALL BEARING 6200	1	
045	157166-8	GEAR HOUSING	1	
046	253314-8	THIN WASHER 15	1	
047	211034-0	BALL BEARING 608	1	
048	151162-8	TORQUE LIMITER COMPLETE	1	
049	923456-9	CAP SQUARE NECK BOLT M8X35	1	
050	273496-0	GRIP 32	1	
051	315145-4	GRIP BASE	1	
052	342633-8	BELT	1	
053	331407-2	CYLINDER LINER 24	1	
054	216007-8	STEEL BALL 6.4	3	
055	213377-6	OIL SEAL 21	1	
056	443061-1	FELT RING 20	1	
057	213554-0	O RING 44	1	
058	322096-4	SEAL HOLDER	1	
059	216007-8	STEEL BALL 6.4	3	
060	321616-1	IMPACT BOLT	1	

SPARE PARTS LIST

MODEL NO. HR2510

ITEM	PART NO.	DESCRIPTION	QTY	NOTE
061	213058-2	O RING 10	1	
062	213058-2	O RING 10	1	
063	322254-2	DRILL HOLDER	1	
064	213064-7	O RING 10	1	
067	414425-6	CHANGE RING	1	
073	157523-0	MOTOR HOUSING	1	
074	953106-2	RIVET 0-5	4	
075	854940-2	NAME PLATE HR2510	1	
077	181038-5	A.C. CARBON BRUSH CB-105	1	
078	643600-9	BRUSH HOLDER CAP 6-10	2	
079	241819-0	FAN 65	1	
080	210001-2	BALL BEARING 608LB	1	
081	152229-5	BEARING BOX COMPLETE	1	
082	911241-2	PAN HEAD SCREW M5X25	3	
083	181562-8	HANDLE SET	1	
084	911243-8	PAN HEAD SCREW M5X25	3	
085	911343-4	PAN HEAD SCREW M6X25	2	
086	665883-1	POWER SUPPLY CORD 1.0-2-5.0	1	
087	682540-6	CORD GUARD 9.3-90	1	
088	687031-2	STRAIN RELIEF	1	
089	911133-5	PAN HEAD SCREW M4X18	2	
090	645253-0	NOISE SUPPRESSOR	1	
092	685700-9	SPONGE SHEET	1	
093	651258-0	SWITCH SGE106CV-1A	1	220/240V
094	421145-5	DUST COVER	1	
095	181562-8	HANDLE SET	1	
096	911328-0	PAN HEAD SCREW M6X18	2	
097	924216-2	WING BOLT M5X15	1	
098	261042-1	RUBBER WASHER 4.5	1	
099	231946-1	CONICAL COMPR. SPRING 21-25	1	
100	286220-2	CAP 34	1	
400	321144-6	DEPTH GAUGE	1	
404	*****	*****	***	*****
407	122376-6	DUST COLLECTER ASS'Y	1	
408	835263-7	INNER CASE	1	
900	646325-4	LINE COIL	1	