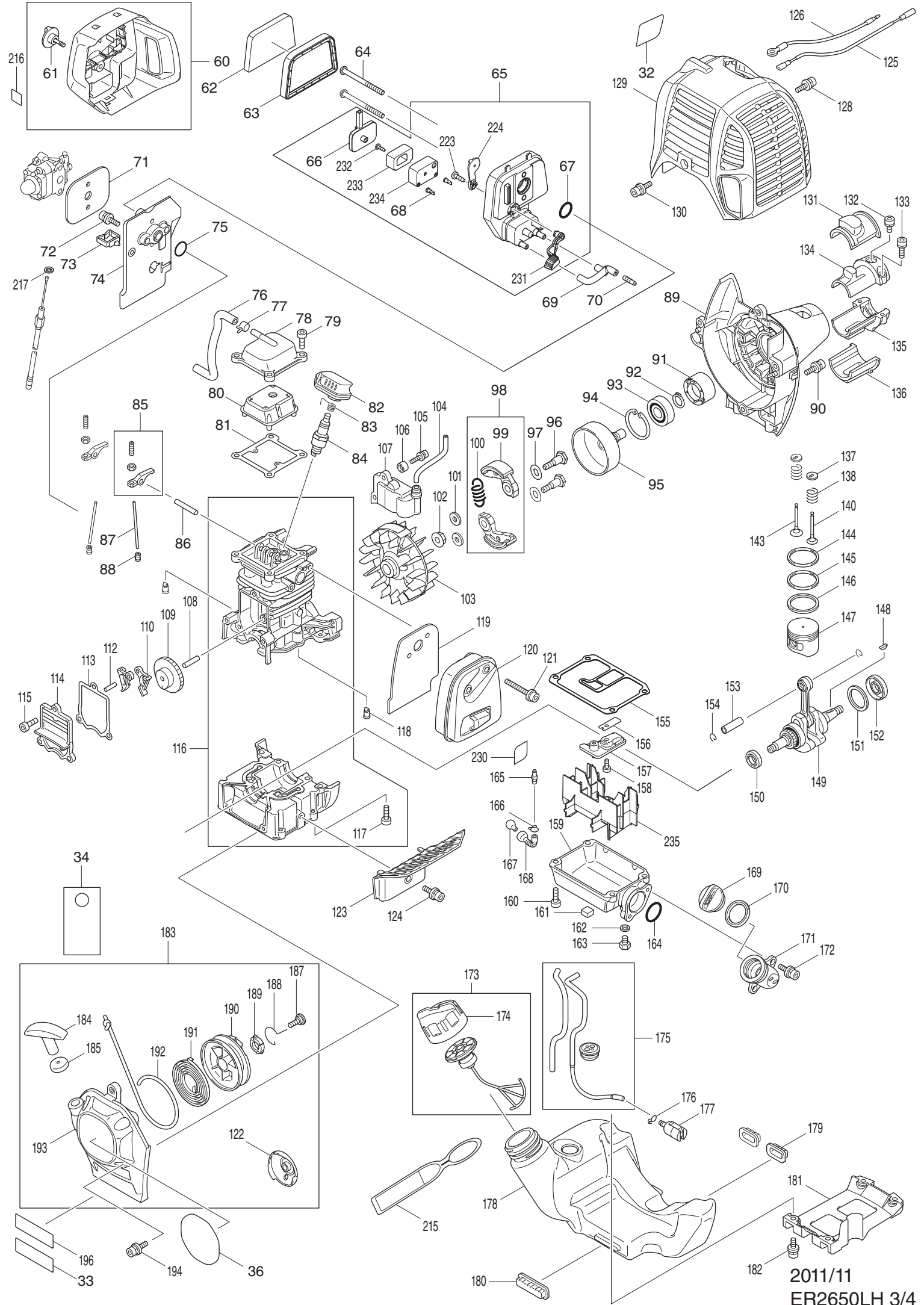
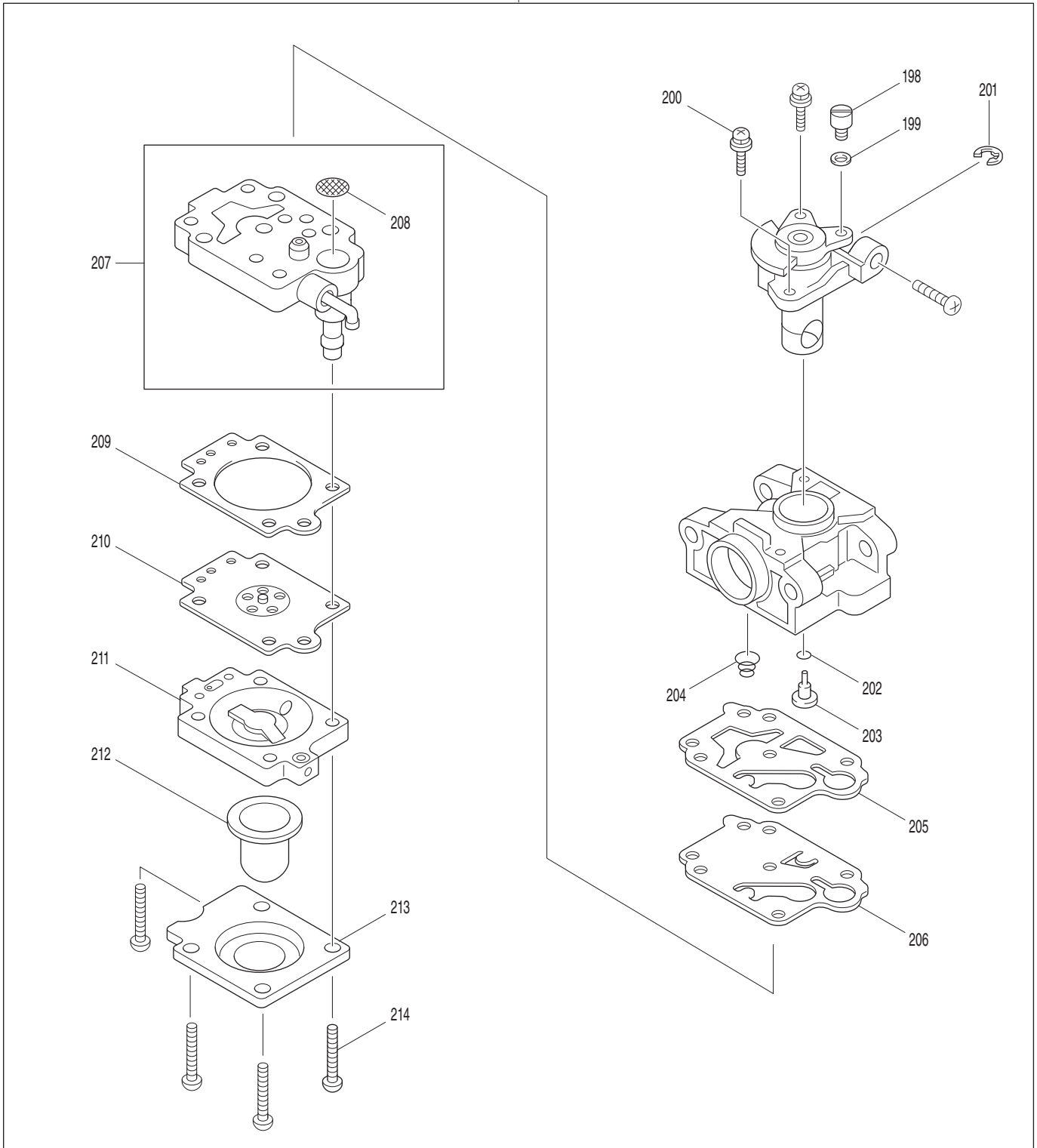


38





POS. No.	Parts No.	DESCRIPTION	Used Qty.	PC. /SET	
1	195626-2	LOOP HANDLE SET	1		
1	D10	INC. 2-6	0		
2	922243-3	HEX. SOCKET HEAD BOLT M5X25	2	PC.	
3	452843-0	CLAMP COVER B	1		
4	346468-9	PIPE CLAMP 33	1		
5	452841-4	LOOP HANDLE	1		
6	346467-1	PIPE CLAMP 24	1		
7	450659-7	SPACER	1		
8	141361-0	BENT PIPE COMPLETE	1		
8	C10	890531-5 CAUTION LABEL	1		
9	141014-1	CLAMP COMPLETE	1	PC.	
9	D10	INC. 10, 11	0		
10	266775-3	HEX BOLT M6X20 WR	2		
11	346469-7	CLAMP	1		
12	141013-3	HEAD CASE COMPLETE	1	PC.	
12	D10	INC. 13-23	0		
13	267845-1	BEARING WASHER	1		
14	326195-4	CUTTER SHAFT	1		
15	211368-1	BALL BEARING 608ZZ	1		
16	257335-2	COLLAR	1		
17	211367-3	BALL BEARING 608DDW	1		
18	318900-3	HEAD CASE	1		
19	267844-3	WASHER	1		
20	267846-9	SPRING WASHER M8	1		
21	318901-1	CUTTER HOLDER	1		
22	922207-7	HEX. SOCKET HEAD BOLT M5X10	1	PC.	
23	922242-5	HEX. SOCKET HEAD BOLT M5X25	1	PC.	
24	141015-9	PROTECTOR COMPLETE	1	PC.	
24	D10	INC. 25-30	0		
25	453782-7	SAFETY COVER	1		
26	266776-1	SCREW M5X14	2		
27	267842-7	WASHER M5	2		
28	346612-8	CUTTER	1		
29	267843-5	SPRING WASHER M5	2		
30	264079-7	NUT M5	2		
31	819312-8	MAKITA LOGO LABEL	1	PC.	
32	806902-6	ENGINE LABEL	1	PC.	
33	816567-6	SERIAL NO. LABEL	1		
34	819430-2	CAUTION TAG	1		
36	890465-2	ER2650LH MODEL NO. LABEL	1		
38	125776-9	CONTROL LEVER ASSEMBLY	1		
38	D10	INC. 39-55	0		
39	266130-9	TAPPING SCREW BIND PT 3X16	1	PC.	
40	451595-0	SWITCH COVER	1		
41	451594-2	SWITCH LEVER	1		
42	232251-9	LEAF SPRING	1	PC.	
43	188832-6	LEVER CASE SET	1		
43	D10	INC. 55	0		
44	346248-3	PIPE CLAMP 24	2		
45	922218-2	H. S. H. BOLT M5X14 WITH WR	2	PC.	
46	451593-4	LOCK LEVER	1		
47	233541-3	TORSION SPRING 7	1	PC.	
48	168571-4	CONTROL CABLE	1		
49	233540-5	TORSION SPRING 11	1	PC.	
50	451592-6	THROTTLE LEVER	1		

51		638714-7	LEAD UNIT	1	
52		638713-9	LEAD UNIT	1	
53		452071-7	CORRUGATE TUBE	1	
54		266326-2	TAPPING SCREW 4X18	4	PC.
55		188832-6	LEVER CASE SET	1	
55	D10		INC. 43	0	
60		126202-1	CLEANER COVER ASSEMBLY	1	
60	D10		INC. 61	0	
61		265791-2	THUMB SCREW M4	1	
62		443171-4	AIR CLEANER ELEMENT	1	
63		443169-1	AIR CLEANER ELEMENT	1	
64		266618-9	H. S. BUTTON HEAD BOLT M5X60	2	
65		126198-6	CLEANER PLATE ASSEMBLY	1	
65	D10		INC. 66-68, 223, 224, 231-234	0	
66		162346-3	SEPARATOR PLATE	1	
67		213540-1	O RING 15	1	
68		424316-3	CHECK VALVE	2	
69		422099-9	PIPE	1	
70		325665-0	JOINT PIPE	1	PC.
71		442153-3	CARBURETOR GASKET	1	
72		266787-6	H. S. H. BOLT M5X18 WITH WR	2	
73		451825-9	CLAMP	1	
74		451729-5	INSULATOR	1	
75		213547-7	O-RING 12	1	
76		422055-9	BREATHER PIPE	1	
77		345918-1	HOSE CLAMP	1	PC.
78		318745-9	ROCKER COVER OUTER	1	PC.
79		922222-1	HEX. SOCKET HEAD BOLT M5X16	4	PC.
80		453860-3	ROCKER COVER INNER	1	
81		162304-9	ROCKER COVER GASKET	1	
82		424302-4	PLUG CAP	1	
83		324891-8	PLUG CAP SPRING	1	PC.
84		168534-0	SPARK PLUG	1	PC.
85		125554-7	ROCKER ARM ASSEMBLY	2	PC.
86		256200-2	PIN 5	1	PC.
87		256865-0	ROD 2.5	2	PC.
88		325668-4	SPRING RETAINER	2	PC.
89		451735-0	CLUTCH CASE	1	
90		922228-9	H. S. H. BOLT M5X18 WITH WR	3	PC.
91		450569-8	SPACER	1	
92		961052-5	RETAINING RING S-12	1	PC.
93		210111-5	BALL BEARING 6201LLU	1	PC.
94		962151-6	RETAINING RING R-32	1	PC.
95		168710-6	CLUTCH DRUM COMPLETE	1	
96		266457-7	SHOULDER HEX. BOLT M6X25	2	PC.
97		267817-6	WASHER 8	2	PC.
98		126135-0	CLUTCH ASSEMBLY	1	
98	D10		INC. 99, 100	0	
99		168498-8	CLUTCH SHOE	2	PC.
100		231881-3	TENSION SPRING 7	1	
101		267812-6	WASHER 6	2	
102		264039-9	FRANGE NUT	1	
103		318569-3	FLYWHEEL	1	
104		444021-6	TUBE	1	
105		266602-4	HEX. SOCKET HEAD BOLT M4X20	2	
106		452049-0	SPACER	2	

107		168559-4	IGNITION COIL	1	
108		268238-5	PIN 5	1	PC.
109		125552-1	CAM GEAR ASSEMBLY	1	PC.
110		313169-4	CAM LIFTER	2	PC.
112		268239-3	PIN 4	1	PC.
113		162274-2	CAM GEAR COVER GASKET	1	PC.
114		318443-5	CAM GEAR COVER	1	PC.
115		922222-1	HEX. SOCKET HEAD BOLT M5X16	3	PC.
116		135478-9	CYLINDER BLOCK ASSEMBLY	1	
116	D10		INC. 117	0	
117		922222-1	HEX. SOCKET HEAD BOLT M5X16	6	PC.
118		424201-0	CHECK VALVE	2	PC.
119		346331-6	MUFFLER GASKET	1	
120		168554-4	EXHAUST MUFFLER	1	
121		266440-4	HEX SOCKET HEAD BOLT M5X40	2	PC.
122		168483-1	PULLEY	1	PC.
123		451731-8	MUFFLER PLATE	1	
124		922218-2	H. S. H. BOLT M5X14 WITH WR	1	PC.
125		638707-4	LEAD UNIT	1	
126		638708-2	LEAD UNIT	1	
128		922218-2	H. S. H. BOLT M5X14 WITH WR	1	PC.
129		453266-5	CYLINDER COVER	1	
130		922218-2	H. S. H. BOLT M5X14 WITH WR	1	PC.
131		424082-2	BUFFER RUBBER	1	PC.
132		922211-6	HEX. SOCKET HEAD BOLT M5X12	1	PC.
133		922226-3	HEX. SOCKET HEAD BOLT M5X18	2	PC.
134		318249-1	PIPE HOLDER	1	PC.
135		318250-6	PIPE HOLDER	1	PC.
136		424083-0	BUFFER RUBBER	1	PC.
137		424200-2	SPACER	2	PC.
138		234108-0	COMPRESSION SPRING 9	2	PC.
140		325669-2	EXHAUST VALVE	1	PC.
143		325670-7	INTAKE VALVE	1	PC.
144		257298-2	PISTON RING (TOP) 34	1	PC.
145		257299-0	PISTON RING (SECOND) 34	1	PC.
146		257300-1	PISTON RING 34	1	PC.
147		318441-9	PISTON	1	PC.
148		254040-2	WOODRUFF KEY 3	1	
149		135481-0	CRANK SHAFT ASS'Y	1	
150		213148-1	OIL SEAL 10	1	PC.
151		267400-9	FLAT WASHER 23	1	PC.
152		213147-3	OIL SEAL 12	1	PC.
153		257781-9	PISTON PIN	1	PC.
154		233976-8	CLIP	2	PC.
155		162345-5	OIL CASE GASKET	1	
156		346083-9	LEAD VALVE	1	PC.
157		318910-0	RETAINER PLATE	1	
158		922112-8	HEX. SOCKET HEAD BOLT M4X10	1	PC.
159		318588-9	OIL CASE	1	
160		922222-1	HEX. SOCKET HEAD BOLT M5X16	4	PC.
161		424344-8	DAMPER	1	
162		346305-7	GASKET	1	
163		266611-3	HEX BOLT M6X8	1	
164		213548-5	O-RING 20	1	
165		325665-0	JOINT PIPE	1	PC.
166		282020-8	HOSE CLAMP	1	PC.

167		325666-8	OIL WEIGHT	1	PC.	
168		424301-6	OIL TUBE	1		
169		452047-4	OIL CAP	1		
170		424343-0	GASKET	1		
171		452048-2	OIL PIPE	1		
172		922218-2	H. S. H. BOLT M5X14 WITH WR	2	PC.	
173		125728-0	FUEL TANK CAP ASSEMBLY	1		
173	D10		INC. 174	0		
174		451739-2	FUEL TANK CAP	1		
175		168755-4	TUBE COMPLETE	1		
176		282020-8	HOSE CLAMP	1	PC.	
177		163518-3	GASOLIN FILTER	1		
178		451736-8	FUEL TANK	1		
179		424080-6	BUFFER RUBBER	2	PC.	
180		424081-4	BUFFER RUBBER	1	PC.	
181		451737-6	TANK GUARD	1		
182		922218-2	H. S. H. BOLT M5X14 WITH WR	4	PC.	
183		195308-6	RECOIL STARTER SET	1		
183	D10		INC. 122, 184, 185, 187-193	0		
184		424319-7	STARTER KNOB	1		
185		424359-5	DAMPER	1		
187		266585-8	TAPPING SCREW 5X12	1		
188		325923-4	SWING ARM	1		
189		451938-6	COLLAR	1		
190		451937-8	REEL	1		
191		232258-5	SPIRAL SPRING	1		
192		444023-2	STARTER ROPE	1		
193		451733-4	STARTER CASE	1		
194		922223-9	H. S. H. BOLT M5X16 WITH WR	4		
196		816565-0	MAKITA LOGO LABEL	1		
197		168591-8	CARBURETOR	1		
197	D10		INC. 198-207, 209-214	0		
198		325922-6	SWIVEL	1		
199		413140-9	WASHER	1		
200		266581-6	PAN HEAD SCREW M3X8 WITH W	2		
201		257964-1	STOP RING E-3	1		
202		213538-8	O RING 2	1		
203		325985-2	JET	1		
204		234183-6	CONICAL COMPRESSION SPRING 5-9	1		
205		442155-9	PUMP GASKET	1		
206		168575-6	PUMP DIAPHRAGM	1		
207		140437-0	PUMP BODY	1		
207	D10		INC. 208	0		
208		352010-6	INLET SCREEN	1		
209		442154-1	METERING DIAPHRAGM GASKET	1		
210		168620-7	METERING DIAPHRAGM	1		
211		140438-8	AIR PURGE BODY	1		
212		424314-7	PRIMER PUMP	1		
213		346270-0	PRIMER PUMP COVER	1		
214		266582-4	TAPPING SCREW 3X24	4		
215		810455-9	CAUTION PLATE	1	PC.	
216		891985-9	INDICATION LABEL	1		
217		941152-7	FLAT WASHER 6	1	PC.	
218		819760-1	DATE CODE LABEL	1		
223		266427-6	TAPPING SCREW 4X12	1	PC.	
224		452219-1	CHOKE PLATE	1		

231		452220-6	CHOKE LEVER	1		
232		266007-8	TAPPING SCREW BIND PT 3X10	1	PC.	
233		352020-3	SEPARATOR MESH	1		
234		453865-3	SEPARATOR CASE	1		
235		453862-9	OIL CASE PLATE	1		
A01		122980-1	CUTTER ASSEMBLY	1	PC.	
A01	C10	141329-6	HOUSING COMPLETE	1		
A01	C20	234229-8	COMPRESSION SPRING 13	1	PC.	
A01	C30	318816-2	EYE LET	2	PC.	
A01	C40	318848-9	NUT M8	1		
A01	C50	453227-5	COVER	1	PC.	
A01	C60	453228-3	BOBBIN	1	PC.	
A02		195500-4	OIL SET	1		
A03		831304-7	ACCESSORY BAG	1	PC.	
A04		256530-1	PIN 4	1		
A05		782233-6	BOX DRIVER 10-16	1	PC.	
A06		783223-2	WRENCH 4	1	PC.	