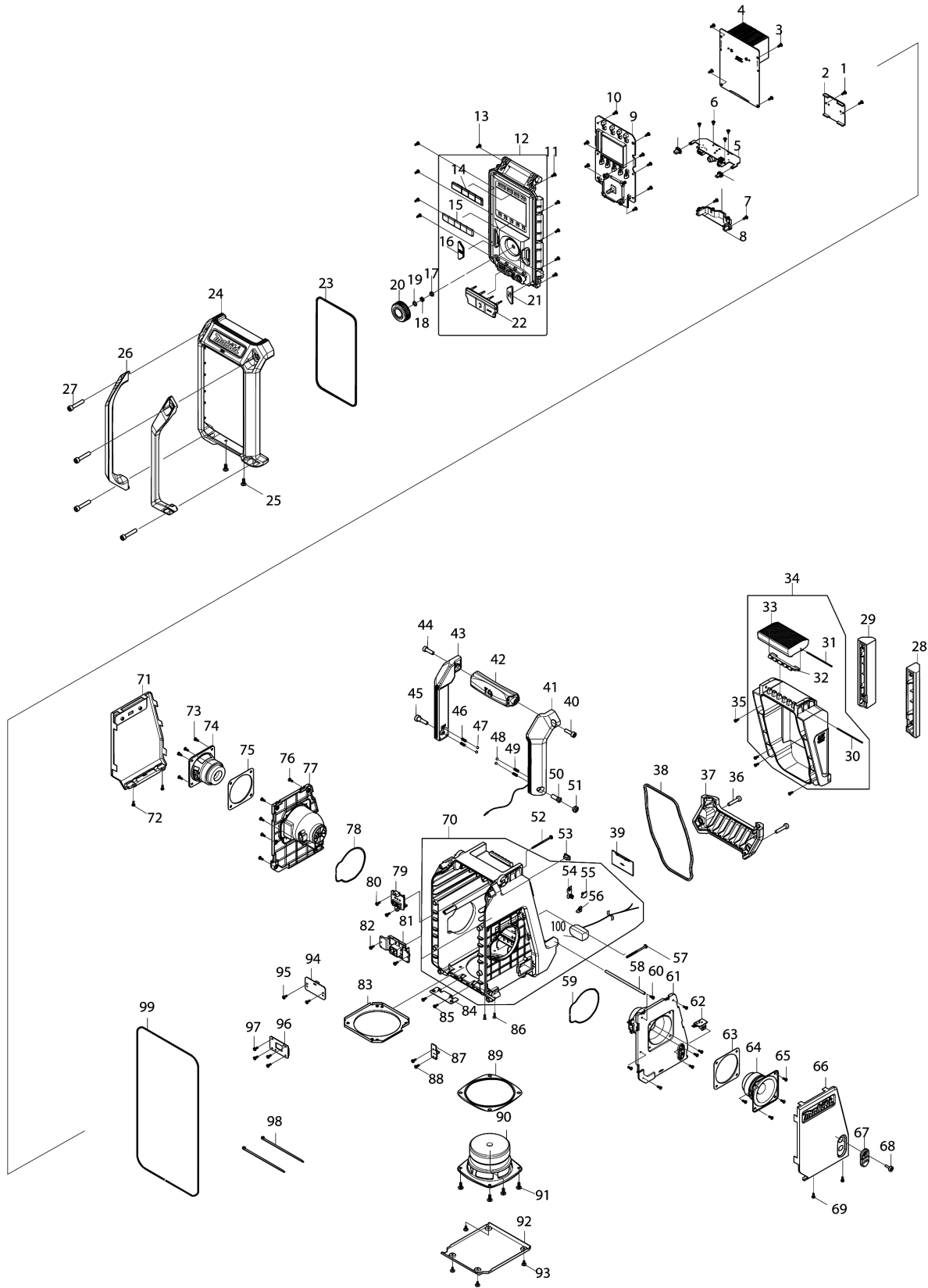


Model No.DMR114B JOB SITE RADIO





## Model No.DMR114B JOB SITE RADIO

Item	Parts No.	Description	I/C	Qty	New/Old	Opt. 1	Opt. 2	Note
001	SE00000521	SCREW PTB 3X8(ZK) 29S16308001		2				
002	SE00000683	PCB H ASS'Y		1				
003	SE00000521	SCREW PTB 3X8(ZK) 29S16308001		4				
004	SE00000684	PCB A ASS'Y		1				
005	SE00000687	PCB P ASS'Y		1				
006	SE00000685	SCREW PTB 2.6X5 ZK		4				
007	SE00000521	SCREW PTB 3X8(ZK) 29S16308001		2				
008	SE00000752	JACK PCB HOLDER		1				
009	SE00000690	PCB C ASS'Y DMR114 CE		1				
010	SE00000521	SCREW PTB 3X8(ZK) 29S16308001		8				
011	SE00000521	SCREW PTB 3X8(ZK) 29S16308001		5				
012	SE00000769	FRONT CABINET ASS'Y		1				
D10		INC. 14-16,21,22						
013	SE00000521	SCREW PTB 3X8(ZK) 29S16308001		5				
014	SE00000694	POWER KEY		1				
015	SE00000695	PRESET KEY		1				
016	SE00000696	INFO KEY		1				
017	SE00000754	EN/SW WASHER		1				
018	SE00000755	EN/SW NUT		1				
019	SE21B1110A	ROTARY KNOB RING		1				
020	SE00000698	ROTARY KNOB		1				
021	SE00000697	EQ KEY		1				
022	SE00000699	JACK RUBBER COVER		1				
023	SE00000700	FRONT CABINET PACKING		1				
024	SE00000702	FRONT BUMPER(BLK)		1				
025	SE09064161	SCREW M4X16		2				
026	SE00000703	FRONT BAR		2				
027	SE00000709	SCREW PTHE 6X33(CR)		4				
028	SE00000704	BATTERY BUMPER R		1				
029	SE00000705	BATTERY BUMPER L		1				
030	SE00000539	PIN D2X77 2100B300200		1				
031	SE00000533	PIN D2X88 2100B300100		1				
032	SE00000561	LOCKER HINGE 3300B30000020		1				
033	SE00000706	LOCKER COVER		1				
034	SE00000758	BATTERY COVER(BLK)		1				
D10		INC. 30-33						
035	SE00000521	SCREW PTB 3X8(ZK) 29S16308001		4				
036	SE00000709	SCREW PTHE 6X33(CR)		2				
037	SE00000710	REAR BUMPER		1				

Please order the parts with part number.

Print Date 26/2/2020

## Model No.DMR114B JOB SITE RADIO

Item	Parts No.	Description	I/C	Qty	New/Old	Opt. 1	Opt. 2	Note
038	SE00000711	BATTERY COVER PACKING		1				
039	SE00000248	BACK UP BATTERY COVER		1				
040	SE00000176	SCREW PTHE6X20(CR)		1				
041	SE00000770	RIGHT HANDLE ASS'Y		1				
042	SE00000713	HANDLE BAR		1				
043	SE00000714	LEFT HANDLE ASS'Y		1				
044	SE00000176	SCREW PTHE6X20(CR)		1				
045	SE00000715	SCREW PTHE 6X17(CR)		1				
046	SE00000759	SPRING		2				
047	SE09994007	STEEL BALL		2				
048	SE09994007	STEEL BALL		2				
049	SE00000759	SPRING		2				
050	SE00000716	SCREW PTHE 7X16(CR)		1				
051	SE00000717	SCREW PTHE 10.8X4.5(CR)		1				
052	SE00000445	SCREW PTB 3X45(NI)		1				
053	SE00000721	UPDATE RUBBER		1				
054	SE021E9030	+/- BATTERY CONTACT ASS'Y		1				
055	SE00000467	BATTERY CONTACT (-)2100PL00200		1				
056	SE00000466	BATTERY CONTACT(+) 2100RA00700		1				
057	SE00000445	SCREW PTB 3X45(NI)		1				
058	SE021PC030	BATTERY COVER LOCKER		1				
059	SE00000730	SPEAKER HOLDER PACKING		1				
060	SE00000521	SCREW PTB 3X8(ZK) 29S16308001		7				
061	SE00000760	SPEAKER HOLDER R		1				
062	SE00000724	PCB F ASS'Y		1				
063	SE00000729	SPEAKER 2.5" PACKING		1				
064	SE00000728	SPEAKER ASS'Y(2.5")		1				
065	SE00000521	SCREW PTB 3X8(ZK) 29S16308001		4				
066	SE00000725	RIGHT SPK NET ASS'Y		1				
067	SE00000726	DC JACK COVER		1				
068	SE00000404	SCREW PTHE 3X14(CR)		1				
069	SE00000521	SCREW PTB 3X8(ZK) 29S16308001		2				
070	SE00000772	REAR CABINET ASS'Y(BLACK)		1				
D10		INC. 54-56,100						
071	SE00000727	LEFT SPK NET ASS'Y		1				
072	SE00000521	SCREW PTB 3X8(ZK) 29S16308001		2				
073	SE00000521	SCREW PTB 3X8(ZK) 29S16308001		4				
074	SE00000728	SPEAKER ASS'Y(2.5")		1				
075	SE00000729	SPEAKER 2.5" PACKING		1				

Please order the parts with part number.

Print Date 26/2/2020

## Model No.DMR114B JOB SITE RADIO

Item	Parts No.	Description	I/C	Qty	New/Old	Opt. 1	Opt. 2	Note
076	SE00000521	SCREW PTB 3X8(ZK) 29S16308001		5				
077	SE00000731	SPEAKER HOLDER L		1				
078	SE00000730	SPEAKER HOLDER PACKING		1				
079	SE00000732	TERMINAL 10.8V-A-3PIN		1				
080	SE00000521	SCREW PTB 3X8(ZK) 29S16308001		2				
081	SE00000733	TERMINAL E ASS'Y		1				
082	SE00000521	SCREW PTB 3X8(ZK) 29S16308001		2				
083	SE00000734	SPEAKER PLATE		1				
084	SE00000735	REAR PLATE		1				
085	SE00000521	SCREW PTB 3X8(ZK) 29S16308001		2				
086	SE00000736	SCREW JMF 3X10 ZK		2				
087	SE00000737	PCB B ASS'Y		1				
088	SE00000521	SCREW PTB 3X8(ZK) 29S16308001		2				
089	SE00000738	SPEAKER 4"" PACKING		1				
090	SE00000739	SPEAKER ASS'Y (4"")		1				
091	SE09064161	SCREW M4X16		4				
092	SE00000761	SPEAKER GRILL B		1				
093	SE00000741	SCREW PTT 3X8(ZK)		4				
094	SE00000762	PCB D ASS'Y		1				
095	SE00000521	SCREW PTB 3X8(ZK) 29S16308001		2				
096	SE00000743	PCB J ASS'Y		1				
097	SE00000521	SCREW PTB 3X8(ZK) 29S16308001		4				
098	SE00000195	W/TIES 100MM		2				
099	SE00000744	REAR CABINET PACKING		1				
100	SE00000587	LEAD WIRE W/CONNECTOR 170MM		1				
A01	SE00000679	AC ADAPTER (CE)		1				

Please order the parts with part number.

Print Date 26/2/2020