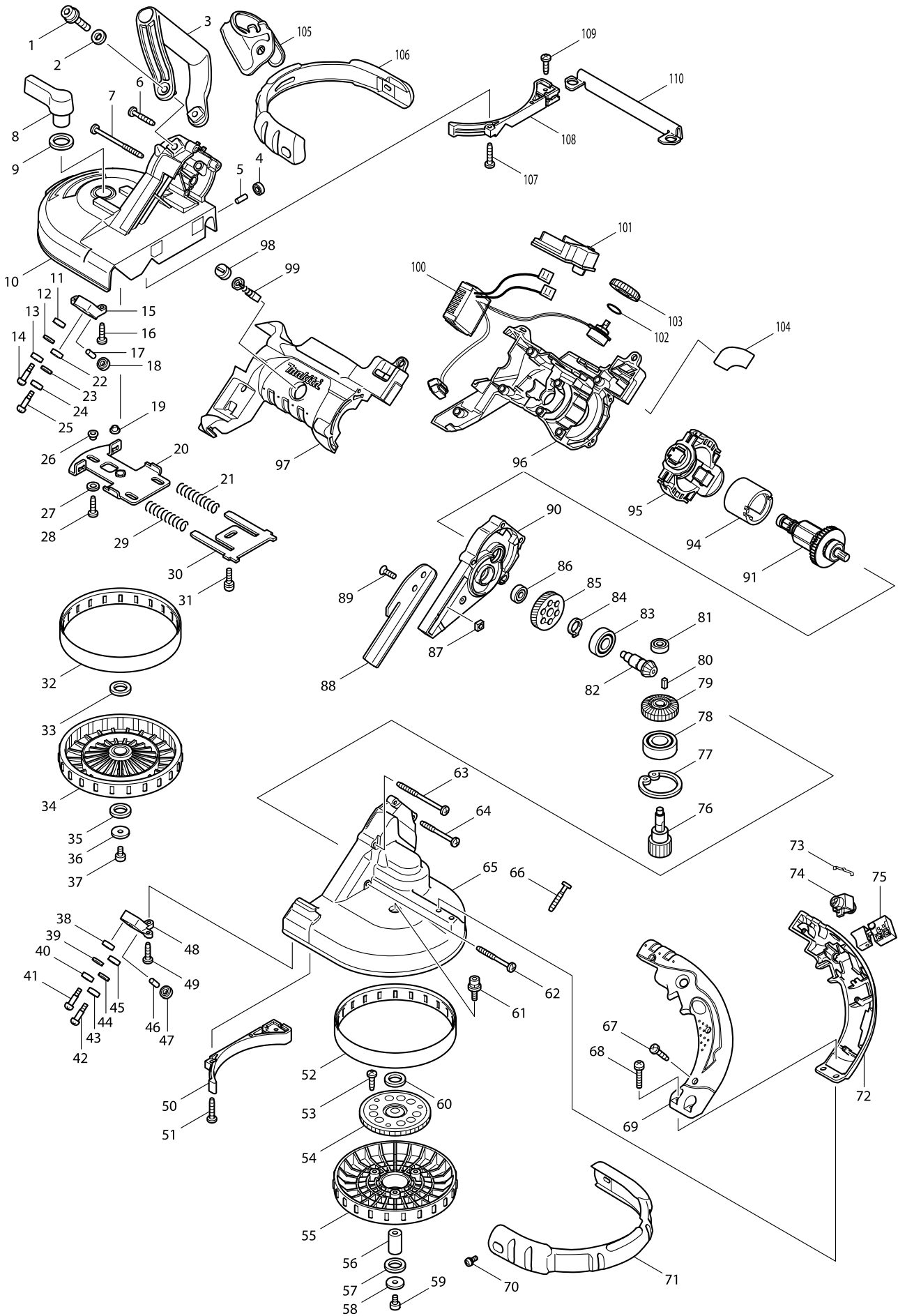


Model No. BPB180 CORDLESS PORTABLE BAND SAW



Model No. BPB180 CORDLESS PORTABLE BAND SAW

Item	Parts No.	Description	I/C	Qty	N/O	Opt. 1	Opt. 2	Note
001	922456-6	HEX. SOCKET HEAD BOLT M8X35		2				
002	941202-8	FLAT WASHER 8		2				
003	273525-9	GRIP		1				
004	210033-9	BALL BEARING 696ZZ		1				
005	256033-5	PIN 6		1				
006	265999-8	TAPPING SCREW 4X25		2				
007	266147-2	TAPPING SCREW 4X55		2				
008	272223-2	LEVER 60		1				
009	267041-1	FLAT WASHER 20		1				
010A	154658-8	FRONT WHEEL COVER COMPLETE		1	*			
C10	816212-3	INDICATIONAL LABEL		1	*			
010-1A	158703-1	FRONT WHEEL COVER COMPLETE	<	1				
C10	816212-3	INDICATIONAL LABEL		1				
010-1B	158703-1	FRONT WHEEL COVER COMPLETE		1				
C10	816212-3	INDICATIONAL LABEL		1				
011	210033-9	BALL BEARING 696ZZ		1				
012	941152-7	FLAT WASHER 6		1				
013	210033-9	BALL BEARING 696ZZ		1				
014	251337-0	+ PAN HEAD SCREW M5		1				
015	317824-0	UPPER HOLDER		1				
016	266034-5	TAPPING SCREW CT 4X16		2				
017	256033-5	PIN 6		1				
018	210033-9	BALL BEARING 696ZZ		1				
019	343494-9	SLEEVE 5		1				
020	163276-1	SLIDE PLATE		1				
021	231449-5	COMPRESSION SPRING 11		1				
022	210033-9	BALL BEARING 696ZZ		1				
023	941152-7	FLAT WASHER 6		1				
024	210033-9	BALL BEARING 696ZZ		1				
025	251337-0	+ PAN HEAD SCREW M5		1				
026	343494-9	SLEEVE 5		3				
027	941051-3	FLAT WASHER 4		3				
028	266034-5	TAPPING SCREW CT 4X16		3				
029	231449-5	COMPRESSION SPRING 11		1				
030	343489-2	TENSION PLATE		1				
031	911221-8	PAN HEAD SCREW M5X16		1				
032	421333-4	RUBBER TIRE		1				
033	253749-3	FLAT WASHER 16		1				
034	152325-9	WHEEL COMPLETE		1				
035	253749-3	FLAT WASHER 16		1				
036	253010-8	FLAT WASHER 6		1				
037	922312-0	HEX. SOCKET HEAD BOLT M6X12		1				
038	210033-9	BALL BEARING 696ZZ		1				
039	941152-7	FLAT WASHER 6		1				
040	210033-9	BALL BEARING 696ZZ		1				
041	251337-0	+ PAN HEAD SCREW M5		1				
042	251337-0	+ PAN HEAD SCREW M5		1				
043	210033-9	BALL BEARING 696ZZ		1				

Model No. BPB180 CORDLESS PORTABLE BAND SAW

Item	Parts No.	Description	I/C	Qty	N/O	Opt. 1	Opt. 2	Note
044	941152-7	FLAT WASHER 6		1				
045	210033-9	BALL BEARING 696ZZ		1				
046	256033-5	PIN 6		1				
047	210033-9	BALL BEARING 696ZZ		1				
048	317823-2	LOWER HOLDER		1				
049	266034-5	TAPPING SCREW CT 4X16		2				
050	418784-0	SAW GUARD HOLDER		1				
051	266042-6	TAPPING SCREW BIND CT 4X20		2				
052	421333-4	RUBBER TIRE		1				
053	266021-4	TAPPING SCREW 5X20		3				
054	154949-7	GEAR COMPLETE		1				
055	419506-1	WHEEL		1				
056	324513-0	LOWER SHAFT		1				
057	253749-3	FLAT WASHER 16		1				
058	253010-8	FLAT WASHER 6		1				
059	922312-0	HEX. SOCKET HEAD BOLT M6X12		1				
060	253749-3	FLAT WASHER 16		1				
061	922323-5	HEX.SOCKET HEAD BOLT M6X16		1				
062	266203-8	TAPPING SCREW BIND CT 4X40		1				
063	266147-2	TAPPING SCREW 4X55		2				
064	266048-4	TAPPING SCREW 4X40		2				
065	317947-4	REAR WHEEL COVER		1				
066	265995-6	TAPPING SCREW 4X18		8				
067	265995-6	TAPPING SCREW 4X18		2				
068	911243-8	PAN HEAD SCREW M5X25		2				
069	188108-1	HANDLE SET		1				
D10		INC. 72						
070	911213-7	PAN HEAD SCREW M5X12		4				
071	168412-4	REAR BUMPER		1				
072	188108-1	HANDLE SET		1				
D10		INC. 69						
073	232201-4	LEAF SPRING		1				
074	419504-5	LOCK OFF BUTTON		1				
075	650229-4	SWITCH SGE120C-3		1				
076	227170-2	SPUR GEAR 12		1				
077	962203-3	RETAINING RING R-47		1				
078	211306-3	BALL BEARING 6204LLB		1				
079	227470-0	SPIRAL BEVEL GEAR 29		1				
080	254202-2	KEY 4		1				
081A	211031-6	BALL BEARING 608LLB		1	*			
081-1A	210029-0	BALL BEARING 608ZZ	O	1				
081-1B	210029-0	BALL BEARING 608ZZ		1				
082	227481-5	SPIRAL BEVEL GEAR 11		1				
083A	211206-7	BALL BEARING 6202LLB		1	*			
083-1A	211241-5	BALL BEARING 6202DDW	O	1				
083-1B	211241-5	BALL BEARING 6202DDW		1				
084	961055-9	RETAINING RING S-15		1				
085	226626-2	HELICAL GEAR 45		1				

Model No. BPB180 CORDLESS PORTABLE BAND SAW

Item	Parts No.	Description	I/C	Qty	N/O	Opt. 1	Opt. 2	Note
086A	211031-6	BALL BEARING 608LLB		1	*			
086-1A	210029-0	BALL BEARING 608ZZ	O	1				
086-1B	210029-0	BALL BEARING 608ZZ		1				
087	252157-5	SQUARE NUT M6		2				
088	345467-8	STOPPER PLATE		1				
089	251981-3	HEX. SOCKET HEAD BOLT M6X16		2				
090	154475-6	GEAR HOUSING COMPLETE		1				
091	619187-3	ARMATURE		1				
094	638420-4	YOKE UNIT		1	*			
094-1	638420-4	YOKE UNIT	O	1				
095	638449-0	ENDBELL COMPLETE		1	*			
095-1	638919-9	ENDBELL COMPLETE	S	1				
096	188107-3	HOUSING SET		1	*			
D10		INC. 97			*			
096-1	187801-4	HOUSING SET	X	1				
D10		INC. 97						
097	188107-3	HOUSING SET		1	*			
D10		INC. 96			*			
097-1	187801-4	HOUSING SET	X	1				
D10		INC. 96						
098	643929-3	BRUSH HOLDER CAP		2				
099	191971-3	CARBON BRUSH CB-430		1				
100	631722-7	CONTROLLER		1	*			
100-1	638917-3	CONTROLLER UNIT	<	1	*			
100-2	632B82-2	CONTROLLER UNIT	X	1				
101	643812-4	TERMINAL		1	*			
101-1	644808-8	TERMINAL	X	1				
102	213261-5	O RING 17		1				
103	419505-3	DIAL		1				
104	862499-5	BPB180 NAME PLATE		1				
106	168413-2	FRONT BUMPER		1				
107	266042-6	TAPPING SCREW BIND CT 4X20		2				
108	418784-0	SAW GUARD HOLDER		1				
109	266034-5	TAPPING SCREW CT 4X16		1				
110	345468-6	SAW GUARD		1	*			
110-1	346669-9	SAW GUARD	<	1				
A01A	***DC18RA	DC18RA FAST CHARGER		1	*			
A01-1A	***DC18RC	DC18RC FAST CHARGER	<	1				
A02-1A	194204-5	BATTERY BL1830 SET		2	*			
A02-2A	194204-5	BATTERY BL1830 SET	O	2	*			
A02-3A	194204-5	BATTERY BL1830 SET	O	2	*			
A02-4A	194204-5	BATTERY BL1830 SET	O	2	*			
A02-5A	194204-5	BATTERY BL1830 SET	O	2	*			
A02-6A	194204-5	BATTERY BL1830 SET	O	2				
A03A	792559-8	BAND SAW BLADE 18 (C.STEEL)		1	*			
A03-1A	B-10350	BAND SAW BLADE 18 BIMETAL	O	1				
A03-1B	B-10350	BAND SAW BLADE 18 BIMETAL		1				
A04	783202-0	HEX. WRENCH 4		1				

Model No. BPB180 CORDLESS PORTABLE BAND SAW

Item	Parts No.	Description	I/C	Qty	N/O	Opt. 1	Opt. 2	Note
A05A	824766-6	PLASTIC CARRYING CASE		1	*			
C10	163467-4	LATCH		2	*			
C20	819145-1	MAKITA LOGO LABEL		1	*			
A05-1A	141496-7	PLASTIC CARRYING CASE	<	1				
C10	163467-4	LATCH		2				
C20	819145-1	MAKITA LOGO LABEL		1				
A06A	450128-8	BATTERY COVER		1				
E01	688172-7	LINE FILTER	S	1				