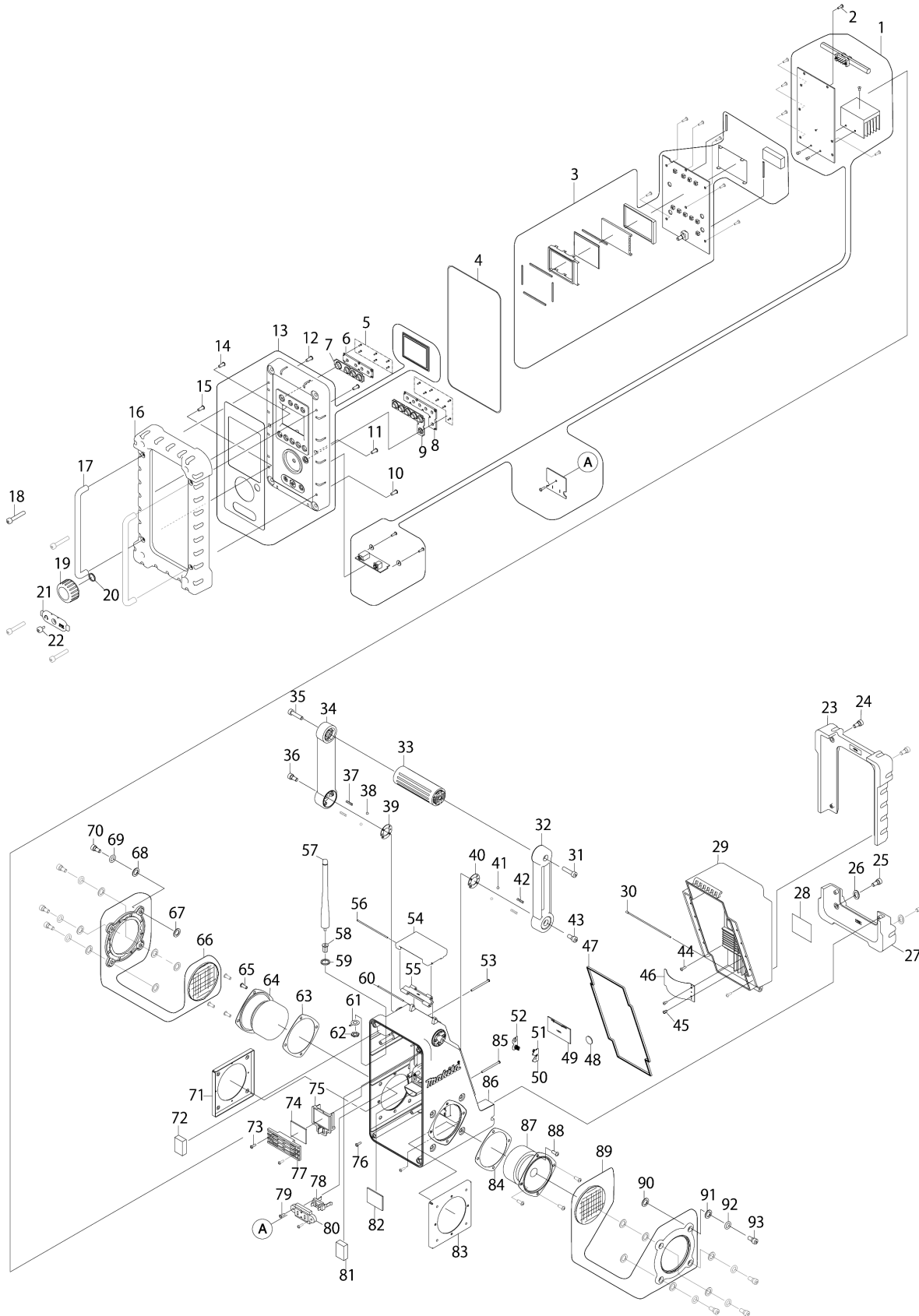


Model No.BMR100 JOB SITE RADIO



Model No.BMR100 JOB SITE RADIO

Item	Parts No.	Description	I/C	Qty	New/Old	Opt. 1	Opt. 2	Note
001	SE00000012	CIRCUIT BOARD A ASS'Y C-EUR		1	*			
C10	SE00000018	CIRCUIT BOARD A #MODULE C		1	*			
C20	SE00000019	CIRCUIT BOARD A JACK #MODULE E		1	*			
C30	SE00000020	CIRCUIT BOARD A SPEAKER WIRE		1	*			
001-1	SE00000038	CIRCUIT BOARD A ASS'Y	X	1				
C10	SE00000050	CIRCUIT BOARD A		1				
C20	SE00000048	CIRCUIT BOARD A JACK		1				
C30	SE00000049	CIRCUIT BOARD A SPEAKER WIRE		1				
002	SE09163102	SCREW M3X10		12				
003	SE00000013	CIRCUIT BOARD C ASS'Y		1	*			
003-1	SE00000039	CIRCUIT BOARD C ASS'Y	X	1				
004	SE024PC040	PACKING		1				
005	SE09090011	SCREW 1.7		13				
006	SE020PC020	POWER BUTTON HOLDER		1				
007	SE0310PC5Z	POWER BUTTON		1				
008	SE020PC030	PRESET BUTTON HOLDER		1				
009	SE0312PC5Z	PRESET BUTTON		1				
010	SE09064161	SCREW M4X16		1				
011	SE09163082	SCREW M3X8		1				
012	SE09064161	SCREW M4X16		2				
013	SE00000005	FRONT CABINET ASS'Y		1				
014	SE09163082	SCREW M3X8		1				
015	SE09064161	SCREW M4X16		1				
016	SE0331PC5Z	FRONT BUMPER		1				
017	SE0338PC5Z	FRONT BAR		2				
018	SE09176426	SCREW M6X42		4				
019	SE0313PC5Z	ROTARY KNOB		1				
020	SE21B1110A	ROTARY KNOB RING		1				
021	SE0335PC5Z	JACK COVER		1	*			
021-1	SE00000042	JACK COVER	X	1				
022	SE09173106	HEX SCREW M3X10		1				
023	SE0334PC5Z	BATTERY COVER BUMPER		1				
024	SE09176106	HEX SCREW M6X10		2				
025	SE09176106	HEX SCREW M6X10		2				
026	SE024J9070	PACKING		2	*			
026-1	SE024J9070	PACKING	O	2				
027	SE0333PC5Z	REAR BUMPER		1				
028	SE0340PC5Z	ID LABEL		1				
029	SE0304PC5Z	BATTERY COVER		1				
030	SE021PC030	BATTERY COVER LOCKER		1				

Please order the parts with part number.

Print Date 19/6/2019

Model No.BMR100 JOB SITE RADIO

Item	Parts No.	Description	I/C	Qty	New/Old	Opt. 1	Opt. 2	Note
031	SE9076146A	HEX SCREW M6X14		1				
032	SE309PC5ZR	HANDLE HOLDER R		1				
033	SE0309J96A	HANDLE		1				
034	SE309PC5ZL	HANDLE HOLDER L		1				
035	SE9076146A	HEX SCREW M6X14		1				
036	SE09176166	HEX SCREW M6X16		1				
037	SE021J9090	SPRING		2				
038	SE09994007	STEEL BALL		2				
039	SE021J9070	HANDLE SUS-PLATE		1				
040	SE021J9070	HANDLE SUS-PLATE		1				
041	SE09994007	STEEL BALL		2				
042	SE021J9090	SPRING		2				
043	SE09176166	HEX SCREW M6X16		1				
044	SE09163102	SCREW M3X10		2				
045	SE09163062	SCREW M3X6		2				
046	SE021PC000	BATTERY CUSHION		1				
047	SE024PC010	PACKING		1				
048	SE023PC030	SPACER		1				
049	SE0307PC5Z	BACK UP BATTERY COVER		1				
050	SE021E9010	BATTERY CONTACT (+)		1				
051	SE021E9020	BATTERY CONTACT (-)		1				
052	SE021E9030	+/- BATTERY CONTACT ASS'Y		1				
053	SE09163452	SCREW M3X45		2				
054	SE0308PC5Z	BATTERY COVER LOCKER		1				
055	SE0314PC5Z	LOCKER HINGER		1	*			
055-1	SE00000067	LOCKER HINGER	<	1				
056	SE021PC040	LOCKER FIXER PIN 79.5		1				
057	SE0360PC5J	ROD ANT		1	*			
057-1	SE00000033	ROD ANT	O	1				
058	SE021J9032	ROD ANT HOLDER		1				
059	SE024J9050	PACKING		1	*			
059-1	SE024J9050	PACKING	O	1				
060	SE021PC050	LOCKER FIXER PIN 62.8		1				
061	SE021PC100	ROD ANT TERMINAL		1				
062	SE021P0020	NUT		1				
063	SE024J9030	PACKING		1				
064	SE01620771	SPEAKER		1				
065	SE09090023	SCREW M4X12		4				
066	SE00000006	SPEAKER NET ASS'Y #MODULE B		1				
067	SE024J9090	PACKING		4	*			
067-1	SE024J9090	PACKING	O	4				

Please order the parts with part number.

Print Date 19/6/2019

Model No.BMR100 JOB SITE RADIO

Item	Parts No.	Description	I/C	Qty	New/Old	Opt. 1	Opt. 2	Note
068	SE024J9070	PACKING		4	*			
068-1	SE024J9070	PACKING	O	4				
069	SE024J9040	PACKING		4	*			
069-1	SE024J9040	PACKING	O	4				
070	SE9076146A	HEX SCREW M6X14		4				
071	SE021J9010	SPEAKER HOLDER		1				
072	SE023PC020	EVA 25X18X5.5		1				
073	SE09163102	SCREW M3X10		2				
074	SE023PC000	SPACER		1	*			
075	643926-9	BATTERY HOLDER		1	*			
075-1	GM00000530	BATTERY HOLDER C2010239007	X	1	*			
075-2	SE00000097	SLIDE BATTERY HOLDER	S	1				
076	SE09153102	SCREW M3X10		2				
077	SE020PC050	SLIDE BATTERY HOLDER		1	*			
078	GM00000530	BATTERY HOLDER C2010239007		1	*			
078-1	643926-9	BATTERY HOLDER	X	1	*			
078-2	SE00000098	CLUSTER BATTERY HOLDER	S	1				
079	SE09163102	SCREW M3X10		2				
080	SE020PC040	CLUSTER BATTERY HOLDER		1	*			
081	SE023PC020	EVA 25X18X5.5		1				
082	SE02311000	SPACER (A)		1				
083	SE021J9010	SPEAKER HOLDER		1				
084	SE024J9030	PACKING		1				
085	SE09163452	SCREW M3X45		2				
086	SE0303PC5Z	BACK COVER		1	*			
086-1	SE00000041	BACK COVER	X	1	*			
086-2	SE00000068	BACK COVER	S	1				
087	SE01620771	SPEAKER		1				
088	SE09090023	SCREW M4X12		4				
089	SE00000006	SPEAKER NET ASS'Y #MODULE B		1				
090	SE024J9090	PACKING		4	*			
090-1	SE024J9090	PACKING	O	4				
091	SE024J9070	PACKING		4	*			
091-1	SE024J9070	PACKING	O	4				
092	SE024J9040	PACKING		4	*			
092-1	SE024J9040	PACKING	O	4				
093	SE9076146A	HEX SCREW M6X14		4				
A01	SE00000003	AC ADAPTER 383PC10B		1	*			
A01-1	SE00000063	AC ADAPTER 383PCC0B11-A	<	1	*			
A01-2	SE00000078	AC ADAPTER 3A8D127102B11	<	1				

Please order the parts with part number.

Print Date 19/6/2019