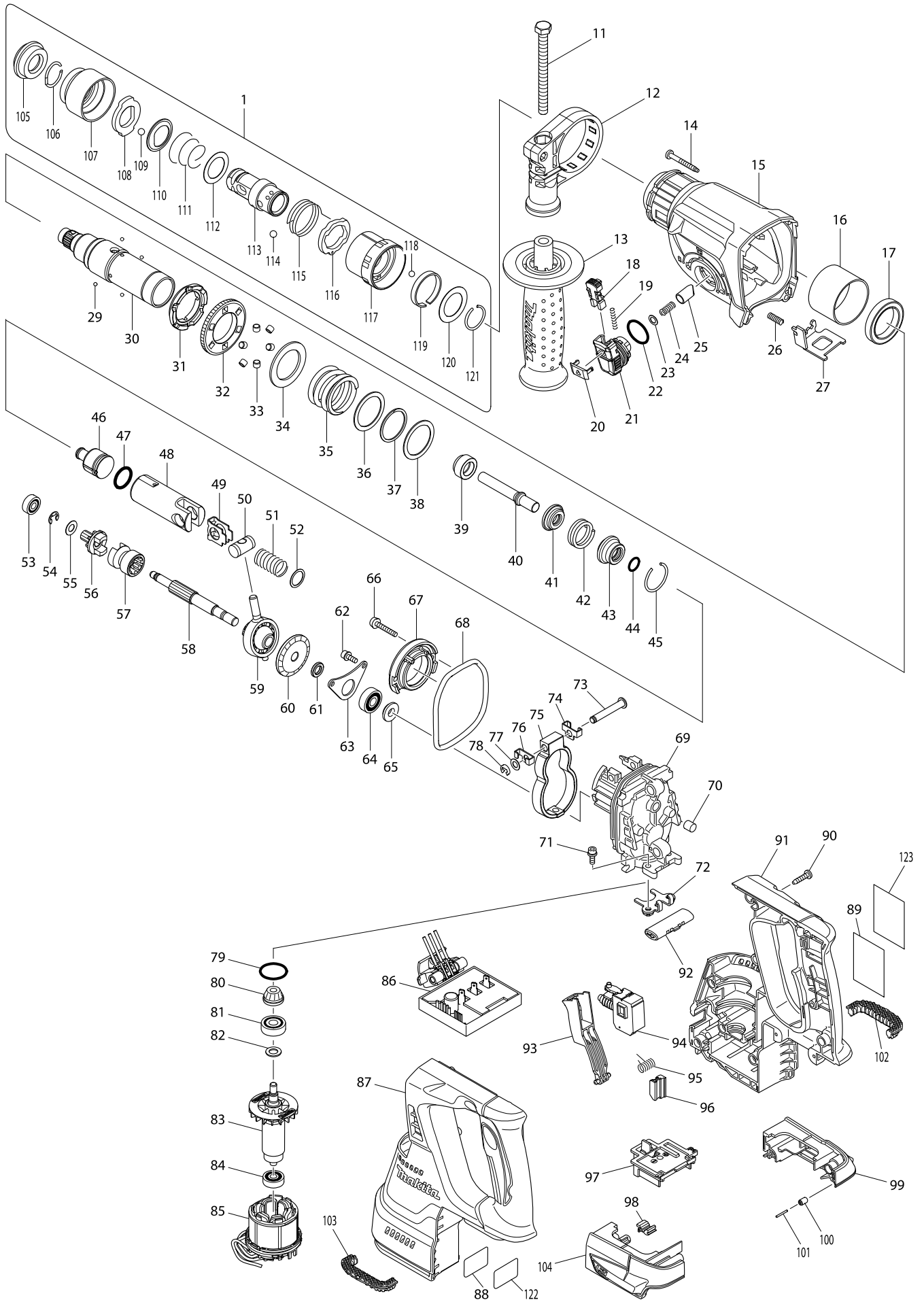


Model No. BHR243 24MM CORDLESS COMBI. HAMMER



Model No. BHR243 24MM CORDLESS COMBI. HAMMER

Item	Parts No.	Description	I/C	Qty	N/O	Opt. 1	Opt. 2	Note
001	194080-7	TOOL HOLDER SET		1				
D10		INC. 105-121						
011	266745-2	HEX.BOLT M8X90		1				
012	453129-5	GRIP BASE		1				
013	158057-6	GRIP 36 COMPLETE		1				
014	266351-3	TAPPING SCREW 4X35		4				
015	141229-0	GEAR HOUSING COMPLETE		1				
C10	213345-9	OIL SEAL 25		1				
C20	890903-4	INDICATION LABEL		1				
016	331890-3	CUP SLEEVE		1				
017	211294-4	BALL BEARING 6806LLU		1				
018A	453130-0	LOCK BUTTON		1	*			
018B	453130-0	LOCK BUTTON		1	*			
018C	453130-0	LOCK BUTTON		1	*			
018-1A	454112-5	LOCK BUTTON	<	1				
018-1B	454112-5	LOCK BUTTON	<	1				
018-1C	454112-5	LOCK BUTTON	<	1				
018-1D	454112-5	LOCK BUTTON		1				
018-1E	454112-5	LOCK BUTTON		1				
018-1F	454112-5	LOCK BUTTON		1				
019A	233459-8	COMPRESSION SPRING 3		1	*			
019B	233459-8	COMPRESSION SPRING 3		1	*			
019C	233459-8	COMPRESSION SPRING 3		1	*			
019-1A	234264-6	COMPRESSION SPRING 3	<	1				
019-1B	234264-6	COMPRESSION SPRING 3	<	1				
019-1C	234264-6	COMPRESSION SPRING 3	<	1				
019-1D	234264-6	COMPRESSION SPRING 3		1				
019-1E	234264-6	COMPRESSION SPRING 3		1				
019-1F	234264-6	COMPRESSION SPRING 3		1				
020	453131-8	CHANGE LEVER COVER		1				
021	453125-3	CHANGE LEVER		1				
022	213381-5	O RING 21		1				
023	253308-3	THIN WASHER 6		1				
024	234147-0	COMPRESSION SPRING 5		1				
025	325785-0	PUSH CORN		1				
026	233360-7	COMPRESSION SPRING 4		1				
027	346537-6	LOCK PLATE		1				
029	216019-1	STEEL BALL 3		4				
030	140266-1	TOOL HOLDERGUIDE COMPLETE		1				
031	313149-0	DRIVING FLANGE		1	*			
031-1	332139-4	DRIVING FLANGE	S	1				
032	227232-6	SPUR GEAR 51		1	*			
032-1	227360-7	SPUR GEAR 51	S	1				
033	268226-2	PIN 6		6	*			
034	267414-8	FLAT WASHER 30		1	*			
035	234148-8	COMPRESSION SPRING 31		1				
036	267153-0	FLAT WASHER 30		1				
037	257932-4	SPIRO LOCK WASHER 30		1				

Model No. BHR243 24MM CORDLESS COMBI. HAMMER

Item	Parts No.	Description	I/C	Qty	N/O	Opt. 1	Opt. 2	Note
038	267153-0	FLAT WASHER 30		1				
039	325783-4	SLEEVE 9B		1				
040	325791-5	IMPACT BOLT B		1				
041	325792-3	WASHER 10		1				
042	234149-6	COMPRESSION SPRING 20		1				
043	325793-1	O-RING CASE B		1				
044	213073-6	O RING 9		1				
045	233979-2	RING SPRING 28		1				
046	326139-4	STRIKER		1				
047	213258-4	O RING 17.5		1				
048	310345-1	PISTON CYLINDER		1				
049	346036-8	GUIDE PLATE		1				
050	324215-8	PISTON JOINT		1				
051	234098-7	COMPRESSION SPRING 14		1				
052	267447-3	FLAT WASHER 14		1				
053	211012-0	BALL BEARING 606ZZ		1				
054	257336-0	STOP RING EXT U-6		1				
055	253186-1	FLAT WASHER 7		1				
056	227231-8	SPUR GEAR 10		1				
057	331814-9	CLUTCH CAM A		1				
058	326140-9	CAM SHAFT		1				
059	219020-5	SWASH BEARING 10		1				
060	227588-7	SPIRAL BEVEL GEAR 32		1				
061	257323-9	RING 8		1				
062	922118-6	HEX. SOCKET HEAD BOLT M4X12		2				
063	346038-4	BEARING RETAINER B		1				
064	211032-4	BALL BEARING 608ZZ		1				
065	324212-4	RING 8		1				
066	922147-9	HEX. SOCKET HEAD BOLT M4X25		2				
067	141230-5	INNER SUPPORT COMPLETE		1				
068	213767-3	O-RING 75		1				
069	318810-4	INNER HOUSING		1				
070	443153-6	FELT		1				
071	922118-6	HEX. SOCKET HEAD BOLT M4X12		2				
072	346536-8	BEARING RETAINER A		1				
073	256536-9	FLAT FILLISTER HD PIN 6		1				
074	346538-4	WEIGHT HOLDER GUIDE		1				
075	313224-2	COUNTER WEIGHT		1				
076	346538-4	WEIGHT HOLDER GUIDE		1				
077	253726-5	FLAT WASHER 6		1				
078	961018-5	STOP RING E-5		1				
079	213008-7	O RING 22.4		1				
080	141458-5	SPIRAL BEVEL GEAR 11 COMPLETE		1				
081	210024-0	BALL BEARING 608LLU		1				
082	253835-0	FLAT WASHER 8		1				
083	619293-4	ROTOR		1				
084	210022-4	BALL BEARING 626DDW		1				
085	629922-1	STATOR		1				

Model No. BHR243 24MM CORDLESS COMBI. HAMMER

Item	Parts No.	Description	I/C	Qty	N/O	Opt. 1	Opt. 2	Note
086	620096-1	CONTROLLER		1	*			
086-1	620241-8	CONTROLLER	S	1				
087	187302-2	HOUSING SET		1	*			
D10		INC. 91			*			
087-1	187687-6	HOUSING SET	<	1	*			
D10		INC. 91			*			
087-2	183A34-5	HOUSING SET	<	1				
D10		INC. 91						
088	896800-2	BHR243 SERIAL NO. LABEL		1				
089	896796-7	BHR243D NAME PLATE		1				
090	266326-2	TAPPING SCREW 4X18		10				
091	187302-2	HOUSING SET		1	*			
D10		INC. 87			*			
091-1	187687-6	HOUSING SET	<	1	*			
D10		INC. 87			*			
091-2	183A34-5	HOUSING SET	<	1				
D10		INC. 87						
092	453124-5	F/R CHANGE LEVER		1				
093	453123-7	SWITCH LEVER		1				
094	650674-3	SWITCH C3JW-1-P		1	*			
094-1	650709-0	SWITCH C3JW-1A-P	S	1				
095	233598-4	TORSION SPRING 6		1				
096	313226-8	OPENER		1				
097	643859-8	TERMINAL		1	*			
097-1	644808-8	TERMINAL	<	1				
098	424476-1	CUSHION		1				
099	187377-1	BATTERY HOUSING SET		1				
C10	263005-3	RUBBER PIN 6		2				
D10		INC. 104						
100	263036-2	RUBBER PIN 5		1				
101	268184-2	PIN 1.5		1				
102	424473-7	CUSHION RUBBER		1				
103	424473-7	CUSHION RUBBER		1				
104	187377-1	BATTERY HOUSING SET		1				
C10	263005-3	RUBBER PIN 6		2				
D10		INC. 99						
105	286263-4	CAP 35		1				
106	233940-9	RING SPRING 19		1				
107	418217-5	CHUCK COVER		1				
108	345333-9	STOPPER		1				
109	216022-2	STEEL BALL 7.0		1				
110	345187-4	GUIDE WASHER		1				
111	233916-6	CONICAL COMP. SPRING 21-29		1				
112	267279-8	FLAT WASHER 21		1				
113	324355-2	TOOL HOLDER		1				
114	216013-3	STEEL BALL 6		2				
115	231669-1	TORSION SPRING 31		1				
116	345334-7	CHANGE RING		1				

Item	Parts No.	Description	I/C	Qty	N/O	Opt. 1	Opt. 2	Note
117	418218-3	CHANGE COVER		1				
118	216018-3	STEEL BALL 5.0		1				
119	345335-5	LEAF SPRING		1				
120	267270-6	FLAT WASHER 24		1				
121	233924-7	RING SPRING 21		1				
122	893072-0	CLEAR LABEL		1				
123	890994-5	CLEAR LABEL		1				
A01	324219-0	DEPTH GAUGE		1				
A02	194079-2	DRILL CHUCK SET		1				
C10	251425-3	- FLAT HEAD SCREW M6X22		1				
C20	324353-6	CHUCK HOLDER		1				
C30	418216-7	SPACER		1				
A03A	***DC18RC	DC18RC FAST CHARGER		1				
A03C	***DC18RC	DC18RC FAST CHARGER		1				
A03D	***DC18RC	DC18RC FAST CHARGER		1				
A03F	***DC18RC	DC18RC FAST CHARGER		1				
A04A	194204-5	BATTERY BL1830 SET		2	*			
A04C	194204-5	BATTERY BL1830 SET		2	*			
A04D	194204-5	BATTERY BL1830 SET		2	*			
A04F	194204-5	BATTERY BL1830 SET		2	*			
A04-1A	194204-5	BATTERY BL1830 SET	O	2				
A04-1C	194204-5	BATTERY BL1830 SET	O	2				
A04-1D	194204-5	BATTERY BL1830 SET	O	2				
A04-1F	194204-5	BATTERY BL1830 SET	O	2				
A05A	450128-8	BATTERY COVER		1				
A05C	450128-8	BATTERY COVER		1				
A05D	450128-8	BATTERY COVER		1				
A05F	450128-8	BATTERY COVER		1				
A06A	141401-4	PLASTIC CASE COMPLETE		1				
C10	162271-8	LATCH		2				
C20	890904-2	INDICATION LABEL		1				
A06C	141402-2	PLASTIC CASE COMPLETE		1				
C10	162271-8	LATCH		2				
C20	890904-2	INDICATION LABEL		1				
A06D	821552-6	CONNECTOR PLASTIC CASE (TYPE4)		1	*			
C10	453974-8	LATCH		4	*			
A06E	821552-6	CONNECTOR PLASTIC CASE (TYPE4)		1	*			
C10	453974-8	LATCH		4	*			
A06F	821552-6	CONNECTOR PLASTIC CASE (TYPE4)		1	*			
C10	453974-8	LATCH		4	*			
A06-1D	821552-6	CONNECTOR PLASTIC CASE (TYPE4)	<	1				
C10	453974-8	LATCH		4				
A06-1E	821552-6	CONNECTOR PLASTIC CASE (TYPE4)	<	1				
C10	453974-8	LATCH		4				
A06-1F	821552-6	CONNECTOR PLASTIC CASE (TYPE4)	<	1				
C10	453974-8	LATCH		4				
A07A	898095-3	BHR243RFE PLASTIC CASE LABEL		2				
A07C	898099-5	BHR243RFEV PLASTIC CASE LABEL		2				

