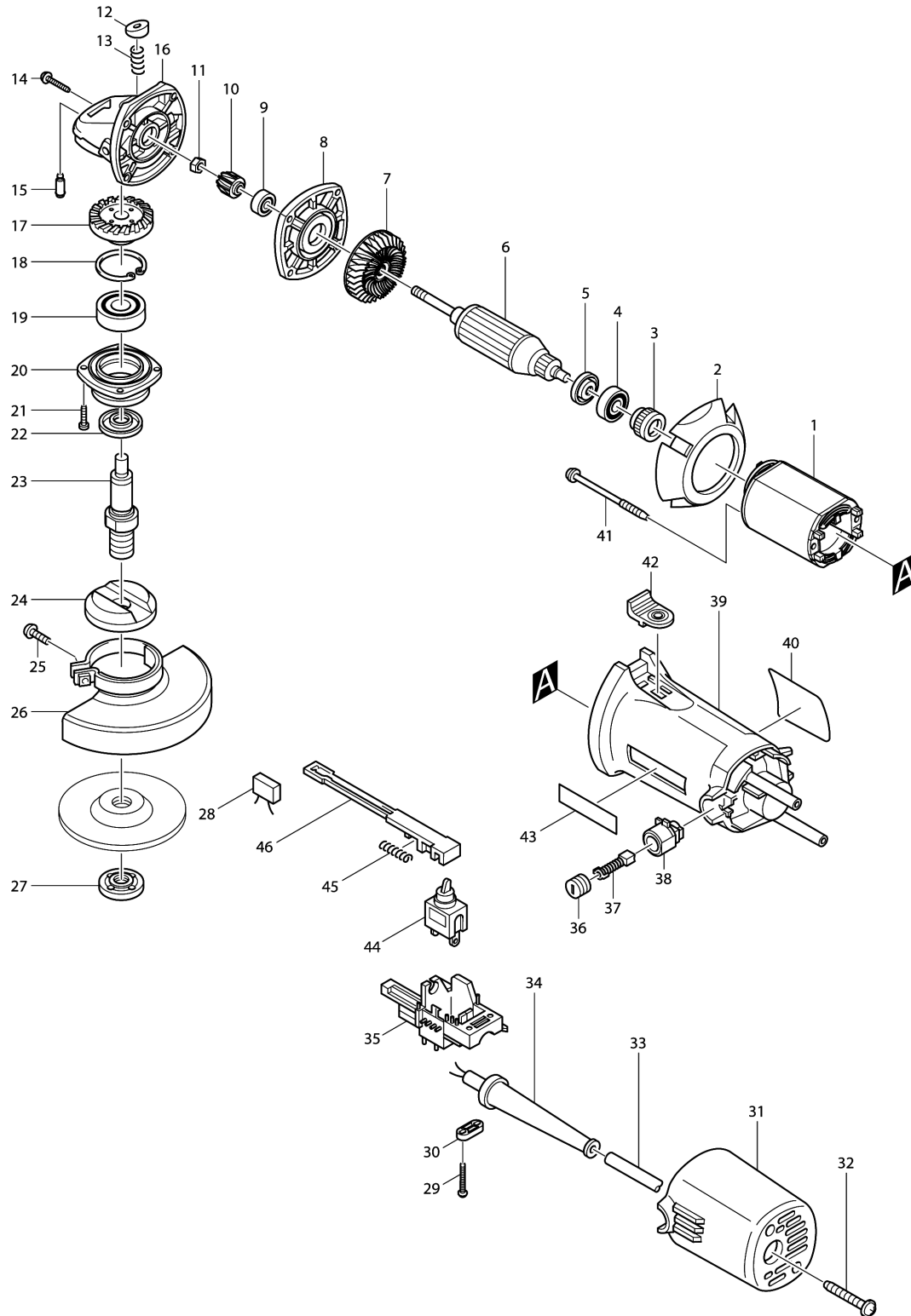


### Model No.9521NB 115MM ANGLE GRINDER





## Model No.9521NB 115MM ANGLE GRINDER

Item	Parts No.	Description	I/C	Qty	New/Old	Opt. 1	Opt. 2	Note
001C_	635003-1	FIELD 220V		1				
002	415490-8	BAFFLE PLATE		1				
003	421494-0	RUBBER RING 19		1				
004-1	210017-7	BALL BEARING 607DDW		1				
005	681636-0	INSULATION WASHER		1				
006C_	517503-2	ARMATURE ASS'Y 220V		1				
D10		INC. 4,5,7						
007	241875-0	FAN 54		1				
008	316601-7	GEAR HOUSING COVER		1				
009	210005-4	BALL BEARING 608DDW		1				
010	226716-1	SPIRAL BEVEL GEAR 11		1				
011	252137-1	HEX. NUT M5-8		1				
012	415491-6	PIN CAP		1				
013	233072-2	COMPRESSION SPRING 8		1				
014	265999-8	TAPPING SCREW 4X25		4				
015	256437-1	PIN 4		1				
016	159711-5	GEAR HOUSING COMPLETE		1	*			
016-1	151742-0	GEAR HOUSING COMPLETE	S	1				
017	226717-9	SPIRAL BEVEL GEAR 36		1	*			
017-1	226728-4	SPIRAL BEVEL GEAR 36	O	1				
018	962151-6	RETAINING RING R-32		1				
019	211129-9	BALL BEARING 6201DDW		1				
020	316600-9	BEARING BOX		1				
021	266034-5	TAPPING SCREW CT 4X16		4	*			
021-1	911121-2	PAN HEAD SCREW M4X14	X	4				
022	415492-4	LABYRINTH RING		1				
023A_	322756-8	SPINDLE M14X2.0		1				
024A1	224298-7	INNER FLANGE 42		1	*			
024A2	224415-9	INNER FLANGE 42	<	1				
025	251391-4	PAN HEAD SCREW M5X16		1				
026	165053-7	WHEEL COVER		1	*			
026-1	165362-4	WHEEL COVER	O	1				
027A_	224554-5	LOCK NUT 14-45		1				
028	645105-5	NOISE SUPPRESSOR		1				
029	265995-6	TAPPING SCREW 4X18		2				
030A1	687052-4	STRAIN RELIEF		1				
031	415540-9	REAR COVER		1				
032	266053-1	TAPPING SCREW 4X35		2				
033H_	665394-6	POWER SUPPLY CORD 1.0-2-2.5		1				
034A_	682503-2	CORD GUARD 8-90		1				
035	687069-7	SUPPORT		1				
036	643550-8	BRUSH HOLDER CAP 5-8		2				

Please order the parts with part number.

Print Date 18/6/2019

## Model No.9521NB 115MM ANGLE GRINDER

Item	Parts No.	Description	I/C	Qty	New/Old	Opt. 1	Opt. 2	Note
037A_	191940-4	CARBON BRUSH CB-411		1				
038	643922-7	BRUSH HOLDER		2				
039	159755-5	MOTOR HOUSING COMPLETE		1	*			
C10	654125-8	TERMINAL		2	*			
039-1	159755-5	MOTOR HOUSING COMPLETE	<	1				
C10	654125-8	TERMINAL		2				
040	857551-2	NAME PLATE 9521NB		1				
041	266049-2	TAPPING SCREW 4X75		2				
042	415303-3	SWITCH KNOB		1				
043	819063-3	MAKITA LABEL		1	*			
044	651418-4	SWITCH ST115A-40		1				
045	233071-4	COMPRESSION SPRING 4		1				
046	415541-7	SWITCH LEVER		1				
A01-1	152490-4	GRIP 36 COMPLETE		1				
A02A_	782407-9	LOCK NUT WRENCH 35		1				
E05	654531-7	TERMINAL BLOCK 2P		1				

Please order the parts with part number.

Print Date 18/6/2019