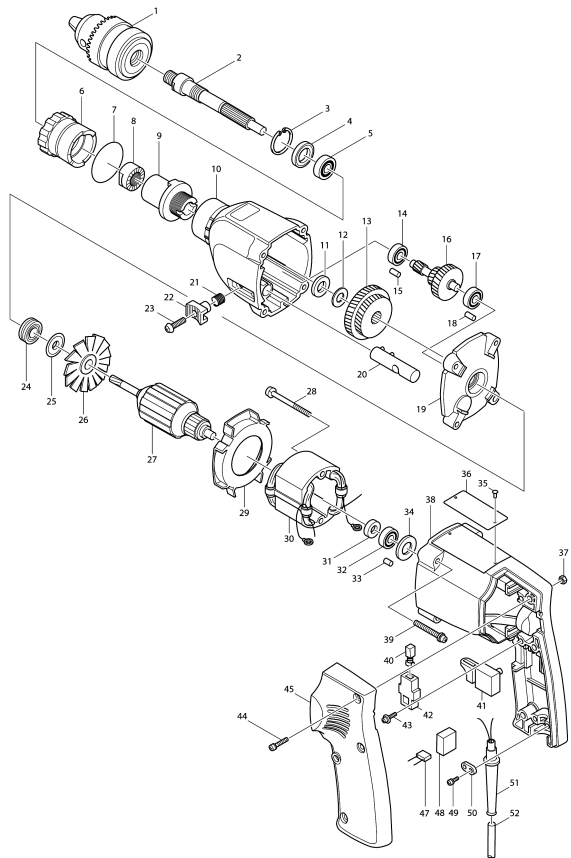


Model No.8419B2 2-SPEED HAMMER DRILL 19MM



Model No.8419B2 2-SPEED HAMMER DRILL 19MM

Item	Parts No.	Description	I/C	Qty	New/Old	Opt. 1	Opt. 2	Note
001-2	192877-8	DRILL CHUCK S13		1				
002	325551-5	SPINDLE		1				
003	962151-6	RETAINING RING R-32		1				
004	213301-9	DUST SEAL 20		1				
005	211201-7	BALL BEARING 6002LLB		1				
006	323679-3	CHANGE RING		1				
007	213458-6	O RING 34		1				
008	223029-1	CAM (A)		1				
009	223030-6	CAM (B)		1				
010	156440-1	GEAR HOUSING		1	*			
C10	816110-1	INDICATION LABEL		1	*			
C20	951104-0	SPRING PIN 4-12		1	*			
D10		INC. 15			*			
010-1	159690-7	GEAR HOUSING	X	1				
C10	816110-1	INDICATION LABEL		1				
C20	951104-0	SPRING PIN 4-12		1				
D10		INC. 15						
011-1	253798-0	FLAT WASHER 13		1				
012	961016-9	STOP RING E-10		1				
013	226038-9	GEAR COMPLETE 39-49		1				
014	211026-9	BALL BEARING 627LLB		1	*			
014-1	210025-8	BALL BEARING 627LLB	O	1				
015	263002-9	RUBBER PIN 4		1				
016	226039-7	GEAR COMPLETE 9-19-41		1				
017	211026-9	BALL BEARING 627LLB		1	*			
017-1	210025-8	BALL BEARING 627LLB	O	1				
018	263002-9	RUBBER PIN 4		1				
019	156441-9	GEAR HOUSING COVER		1				
C10	214002-2	PLANE BEARING 7.9		1				
D10		INC. 18						
020	152135-4	SHIFTER ROD		1				
C10	256054-7	PIN 4		2				
021	231249-3	COMPRESSION SPRING 5		1				
022	411475-2	CHANGE LEVER		1				
023	251429-5	- FLAT HEAD SCREW M4		1	*			
023-1	265029-5	+ PAN HEAD SCREW M4	O	1				
024	211043-9	BALL BEARING 807LLB		1				
025	213002-9	DUST SEAL 8		1				
026-1	241325-5	FAN 58		1				
027C	515098-9	ARMATURE ASS'Y 220V		1				
D10		INC. 24-26,31,32						
028-1	911185-6	PAN HEAD SCREW M4X55		2				

Please order the parts with part number.

Print Date 22/9/2020

Model No.8419B2 2-SPEED HAMMER DRILL 19MM

Item	Parts No.	Description	I/C	Qty	New/Old	Opt. 1	Opt. 2	Note
029	411456-6	BAFFLE PLATE		1				
030C	525088-4	FIELD ASS'Y 220V		1				
C10	654038-3	INSULATED TERMINAL FT1.25-M4		2	*			
C11	654037-5	INSULATED TERM. FT1.25-M3	O	2	*			
C12	654037-5	INSULATED TERM. FT1.25-M3	O	2	*			
031	681614-0	INSULATION WASHER		1				
032	211028-5	BALL BEARING 627LB		1				
033-1	263013-4	RUBBER PIN 4		1				
034	253192-6	FLAT WASHER 14		1				
035	953106-2	RIVET 0-5		2				
036	815090-8	NAME PLATE 8419B-2		1				
037	931102-0	HEX. NUT M4		3				
038	156953-2	MOTOR HOUSING		1				
D10		INC. 33,37						
039	911268-2	PAN HEAD SCREW M5X45		4				
040	181026-2	CARBON BRUSH CB-55		1				
041H	651235-2	SWITCH C2M-A1T		1	*			
041H1	651225-5	SWITCH SGEL215C	S	1				
042	643551-6	BRUSH HOLDER 5-8		2				
043	911124-6	PAN HEAD SCREW M4X14		2				
044	911153-9	PAN HEAD SCREW M4X28		3				
045	411455-8	HANDLE COVER		1				
047E1	645208-5	NOISE SUPPRESSOR		1				
048B	685700-9	SPONGE SHEET		1				
049-1	911133-5	PAN HEAD SCREW M4X18		2				
050C	687031-2	STRAIN RELIEF		1				
051-1	682516-3	CORD GUARD 9.3-85		1				
052N1	665865-3	POWER SUPPLY CORD 1.0-2-2.5		1				
400-4	273627-1	GRIP		1				
401	321059-7	DEPTH GAUGE		1				
402-4	924226-9	WING BOLT M5X20		1				
406-2	763432-9	CHUCK KEY S13		1				
407	410102-8	KEY HOLDER		1				
411-1	252635-5	NUT M8		1				
412-1	941202-8	FLAT WASHER 8		1				
413-1	921472-5	HEX. BOLT M8X50		1				
902-3	182617-2	STEEL CARRYING CASE		1	*			
C10	819033-2	MAKITA LABEL		1	*			
902-4	824608-4	PLASTIC CARRYING CASE	O	1				
C10	417496-2	LATCH		2				
C20	417497-0	HANDLE		1				

Please order the parts with part number.

Print Date 22/9/2020

Model No.8419B2 2-SPEED HAMMER DRILL 19MM

Item	Parts No.	Description	I/C	Qty	New/Old	Opt. 1	Opt. 2	Note
C30	819143-5	MAKITA LABEL		1				

Please order the parts with part number.

Print Date 22/9/2020