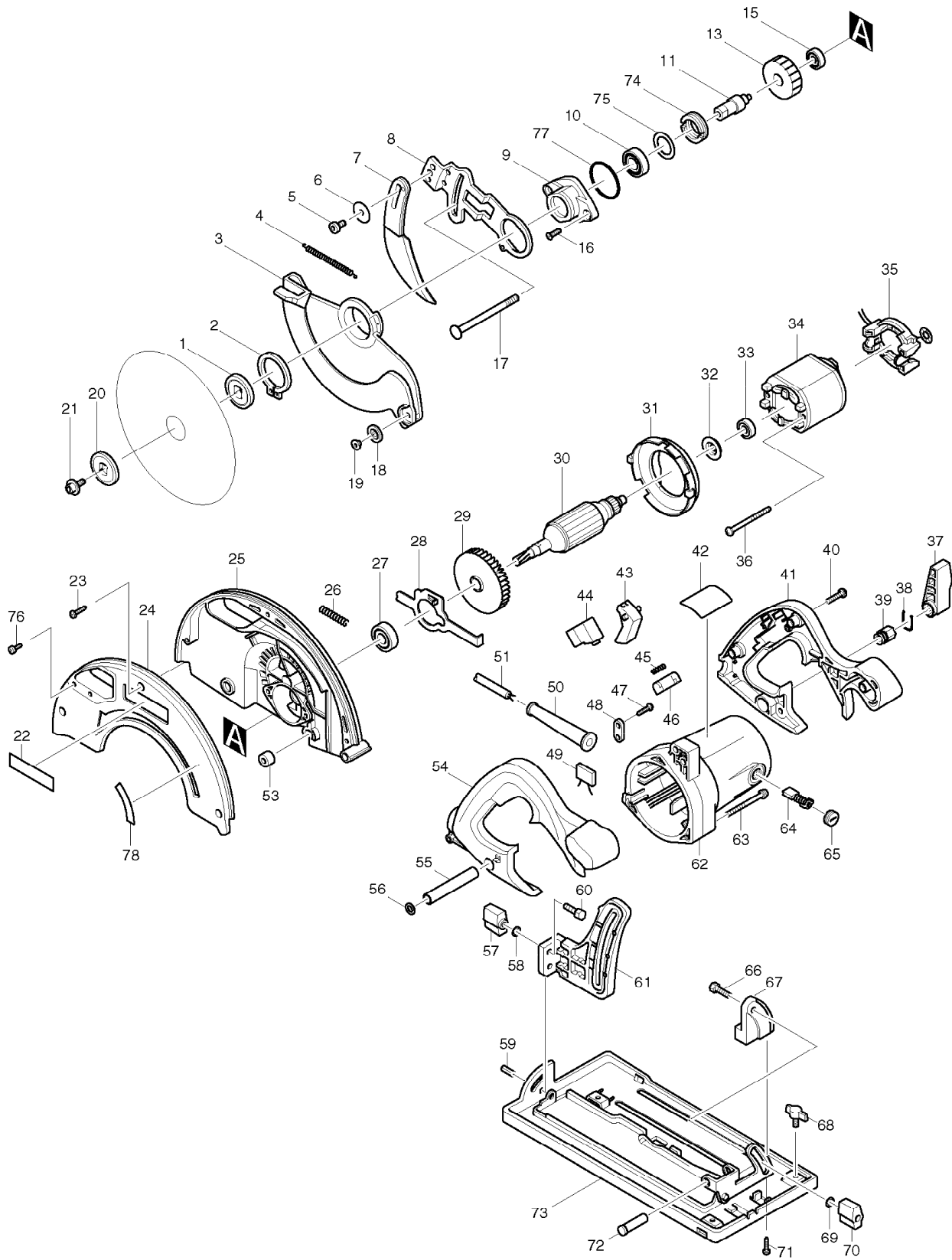


SERVICE DRAWING

MODEL NO. 5705R



SPARE PARTS LIST

MODEL NO. 5705R

ITEM	PART NO.	DESCRIPTION	QTY	NOTE
001	224339-9	INNER FLANGE 40	1	
002	961156-3	RETAINING RING S-40	1	
003	317439-3	SAFETY COVER	1	
004	231827-9	TENSION SPRING 4	1	
005	922312-0	HEX. SOCKET HEAD BOLT M6X12	1	
006	253783-3	FLAT WASHER 6	1	
007	165094-3	RIVING KNIFE	1	
008	*****	*****	***	*****
009	317469-4	BEARING BOX	1	
010	*****	*****	***	*****
011	322922-7	SPINDLE	1	
013	226473-1	HELICAL GEAR 41	1	
015	211034-0	BALL BEARING 608	1	
016	265034-2	+ COUNTERSUNK HEAD SCREW M5X16	2	
017	266019-1	CAP SQUARE NECK BOLT M8X98	1	
018	415438-0	ROLLER 20	2	
019	415437-2	ROLLER PIN 6	2	
020	224338-1	OUTER FLANGE 40	1	
021	266139-1	HEX. SOCKET HEAD BOLT M6X16	1	
022	819064-1	MAKITA MARK	1	
023	266042-6	TAPPING SCREW BIND CT 4X20	3	
024	*****	*****	***	*****
025	152545-5	BLADE CASE COMPLETE	1	
026	233092-6	COMPRESSION SPRING 5	1	
027	211129-9	BALL BEARING 6201DDW	1	
028	344114-8	SHAFT LOCK	1	
029	241876-8	FAN 76	1	
030	516418-0	ARMATURE ASS'Y 220V	1	
031	415460-7	BAFFLE PLATE	1	
032	681625-5	INSULATION WASHER	1	
033	210005-4	BALL BEARING 608DDW	1	
034	634373-5	FIELD 220V	1	
035	632503-2	SUPPORT COMPLETE	1	
036	266029-8	TAPPING SCREW 5X65	2	
037	272230-5	LEVER 54	1	
038	231955-0	RING SPRING 12	1	
039	252141-0	HEX. NUT M8	1	
040	266041-8	TAPPING SCREW 5X25	5	
041	182675-8	HANDLE SET	1	
042	852885-8	NAME PLATE 5705R	1	
043	415439-8	SWITCH LEVER	1	
044	651922-3	SWITCH TG71B	1	
045	231230-4	COMPRESSION SPRING 4	1	
046	415440-3	LOCK-OFF BUTTON	1	
047	265995-6	TAPPING SCREW 4X18	2	
048	*****	*****	***	*****
049	*****	*****	***	*****
050	682540-6	CORD GUARD 9.3-90	1	
051	665865-3	POWER SUPPLY CORD 1.0-2-2.5	1	
053	262511-5	RUBBER SLEEVE 6	1	
054	182675-8	HANDLE SET	1	
055	331432-3	PIPE 9	1	
056	941201-0	FLAT WASHER 8	1	

SPARE PARTS LIST

MODEL NO. 5705R

ITEM	PART NO.	DESCRIPTION	QTY	NOTE
057	252624-0	WING NUT M6	1	
058	941151-9	FLAT WASHER 6	1	
059	951204-6	SPRING PIN 6-16	1	
060	921332-1	HEX. BOLT M6X20	1	
061	316578-6	DEPTH GUIDE	1	
062	159714-9	MOTOR HOUSING COMPLETE	1	
063	911278-9	PAN HEAD SCREW M5X55	3	
064	191963-2	CARBON BRUSH CB-303	1	
065	643750-0	BRUSH HOLDER CAP	2	
066	921332-1	HEX. BOLT M6X20	1	
067	415443-7	ANGULAR PLATE GUIDE	1	
068	265725-5	WING BOLT M6X10	1	
069	941151-9	FLAT WASHER 6	1	
070	252624-0	WING NUT M6	1	
071	265995-6	TAPPING SCREW 4X18	2	
072	256690-9	PIN 10	1	
073	*****	*****	***	*****
074	285831-0	BEARING RETAINER 19-34	1	
075	267126-3	FLAT WASHER 22	1	
076	266026-4	TAPPING SCREW BIND CT 4X12	2	
077	213560-5	O RING 44	1	
078	813647-9	INDICATION LABEL	1	
A01	*****	*****	***	*****
A02	165108-8	GUIDE RULE	1	
A03	192420-3	JOINT	1	
A04	783203-8	HEX. WRENCH 5	1	
A05	*****	*****	***	*****
E01	824606-8	PLASTIC CARRYING CASE	1	