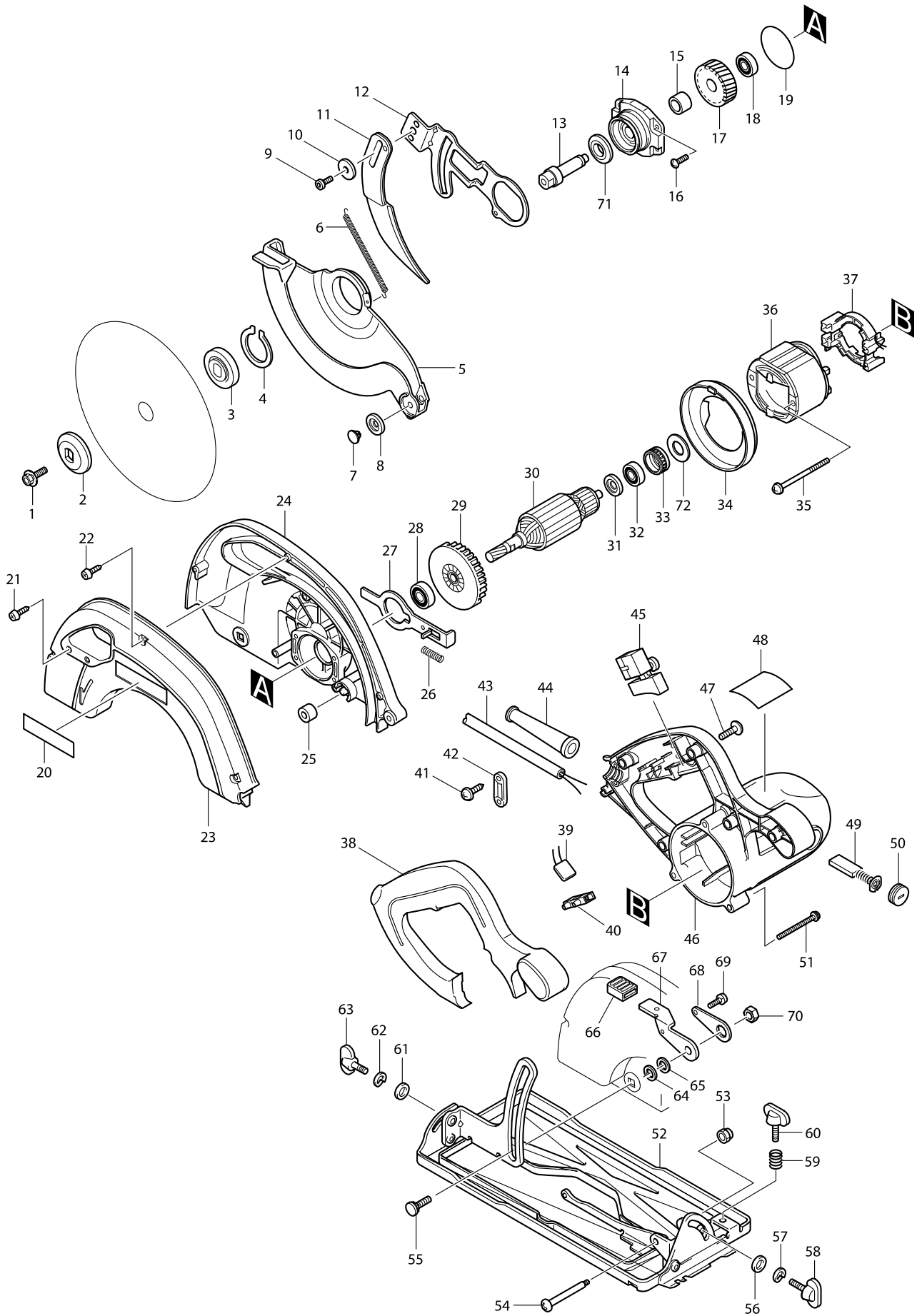


Model No. 5704R CIRCULAR SAW 190MM



Item	Parts No.	Description	I/C	Qty	N/O	Opt. 1	Opt. 2	Note
001	266024-8	HEX. SOCKET HEAD BOLT M6X20		1				
002	224275-9	OUTER FLANGE 40		1				
003	224370-5	INNER FLANGE 40		1				
004	961156-3	RETAINING RING S-40		1				
005	317461-0	SAFETY COVER		1				
006	231818-0	TENSION SPRING 4		1				
007	415437-2	ROLLER PIN 6		2				
008	415438-0	ROLLER 20		2				
009	922312-0	HEX. SOCKET HEAD BOLT M6X12		1				
010	253783-3	FLAT WASHER 6		1				
011	165094-3	RIVING KNIFE		1				
012	344988-7	RIVING KNIFE HOLDER		1	*			
012-1	345734-1	RIVING KNIFE HOLDER	<	1				
013	324110-2	SPINDLE		1				
014	162220-5	BEARING BOX COMPLETE		1				
015	257513-4	SLEEVE 12		1				
016	911526-6	PAN HEAD SCREW M4X16		4				
017	226540-2	HELICAL GEAR 49		1				
018	211032-4	BALL BEARING 608ZZ		1				
019	213620-3	O RING 46		1				
020	819064-1	MAKITA MARK		1	*			
021	266034-5	TAPPING SCREW CT 4X16		2				
022	266034-5	TAPPING SCREW CT 4X16		3				
023	183357-5	BLADE CASE COVER		1	*			
D10		INC. 20			*			
023-1	317460-2	BLADE CASE COVER	O	1				
024	152810-2	BLADE CASE COMPLETE		1				
C10	263002-9	RUBBER PIN 4		1				
025	262511-5	RUBBER SLEEVE 6		1				
026	233092-6	COMPRESSION SPRING 5		1				
027	344990-0	SHAFT LOCK		1				
028	211061-7	BALL BEARING 6000LLB		1				
029	241858-0	FAN 70		1				
030	516489-7	ARMATURE ASS'Y 220-240V		1				
D10		INC. 28,29,31,32						
031	681654-8	INSULATION WASHER		1				
032	211032-4	BALL BEARING 608ZZ		1				
033	421720-7	RUBBER RING 22		1				
034	417580-3	BAFFLE PLATE		1				
035	266044-2	TAPPING SCREW 5X60		2				
036	634449-8	FIELD 220-240V		1				
037	638070-5	SUPPORT COMPLETE		1				
038	417579-8	HANDLE COVER		1				
039	645200-1	NOISE SUPPRESSOR		1	*			
039-1	645190-8	NOISE SUPPRESSOR	O	1				
040	654575-7	TERMINAL BLOCK		1				
041	265995-6	TAPPING SCREW 4X18		2				
042	687052-4	STRAIN RELIEF		1	*			

Model No. 5704R CIRCULAR SAW 190MM

Item	Parts No.	Description	I/C	Qty	N/O	Opt. 1	Opt. 2	Note
042-1	687124-5	STRAIN RELIEF	O	1				
043	665865-3	POWER SUPPLY CORD 1.0-2-2.5		1				
044	682540-6	CORD GUARD 9.3-90		1				
045	651291-2	SWITCH SGES115C-5		1				
046	152811-0	MOTOR HOUSING COMPLETE		1				
C10	643708-9	BRUSH HOLDER 5-11		2				
047	265995-6	TAPPING SCREW 4X18		5				
048	853170-2	NAME PLATE 5704R		1				
049	191963-2	CARBON BRUSH CB-303		1				
050	643750-0	BRUSH HOLDER CAP 7-11		2				
051	911268-2	PAN HEAD SCREW M5X45		3				
052	168353-4	BASE		1				
053	252103-8	HEX. LOCK NUT M5-8		1				
054	265075-8	+ PAN HEAD SCREW M5		1				
055	265965-5	CAP SQUARE NECK BOLT M8X24		1				
056	941151-9	FLAT WASHER 6		1				
057	942151-2	SPRING WASHER 6		1				
058	265701-9	SCREW M6X14		1				
059	231316-4	COMPRESSION SPRING 7		1				
060	265701-9	SCREW M6X14		1				
061	941151-9	FLAT WASHER 6		1				
062	942151-2	SPRING WASHER 6		1				
063	265701-9	SCREW M6X14		1				
064	941201-0	FLAT WASHER 8		1				
065	941201-0	FLAT WASHER 8		1				
066	421746-9	RUBBER CAP		1				
067	344989-5	LEVER PLATE		1				
068	341415-5	LOCK PLATE		1				
069	911108-4	PAN HEAD SCREW M4X8		1				
070	931402-8	HEX. NUT M8		1				
071	257243-7	RING 12		1				
072	261115-0	RUBBER WASHER 13		1				
A01	B-02939	T.C.T. SAW BLADE 190MM		1	*			
A01-1	B-07967	T.C.T.SAW BLADE 190X30X12T	<	1				
A02	164095-8	GUIDE RULE		1				
A03	192420-3	JOINT		1				
C10	266026-4	TAPPING SCREW BIND CT 4X12		2				
A04	783203-8	HEX. WRENCH 5		1				
A05	807439-6	M-FORCE STICKER LABEL		2				
E01B	824606-8	PLASTIC CARRYING CASE		1	*			
C10	183336-3	LATCH SET		1	*			
E01-1B	824651-3	PLASTIC CARRYING CASE	X	1				
C10	417059-4	LATCH		2				
C20	418889-6	HANDLE		1				