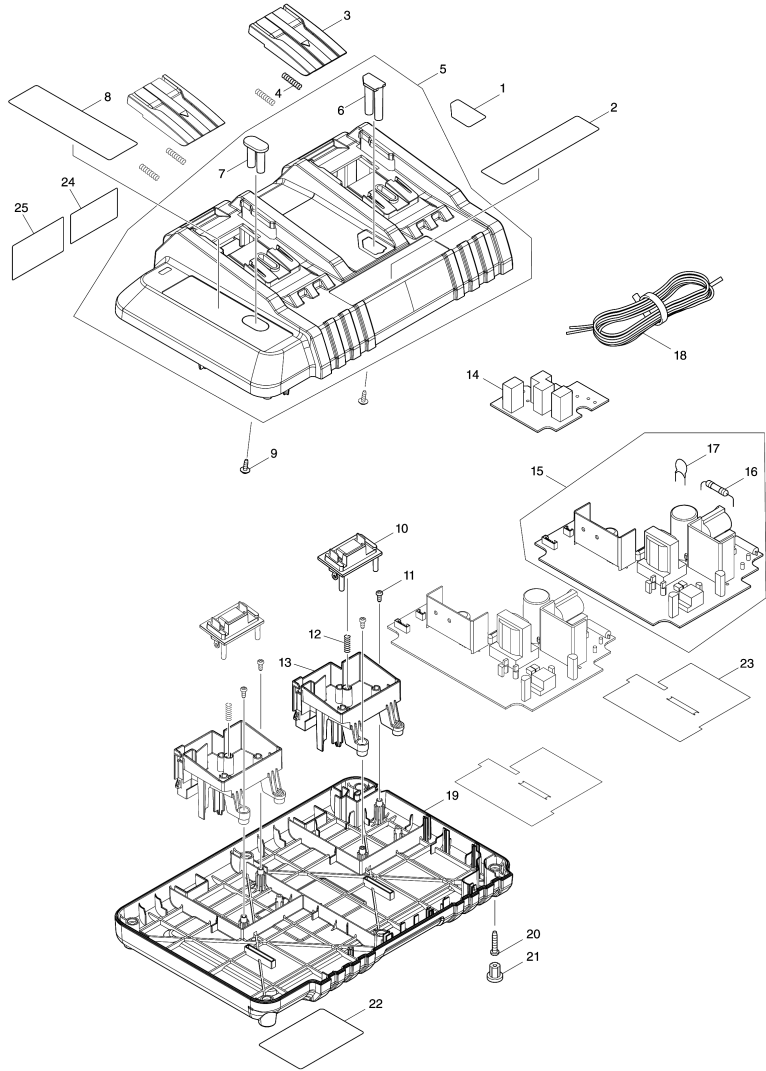


Model No.DC18SH TWO PORT MULTI CHARGER



Model No.DC18SH TWO PORT MULTI CHARGER

Item	Parts No.	Description	I/C	Qty	New/Old	Opt. 1	Opt. 2	Note
001	818Y86-8	INDICATION LABEL		1				
002	818R90-5	MAKITA LOGO LABEL		1				
003	455546-5	TERMINAL COVER		2				
004	231474-6	COMPRESSION SPRING 4		4				
005	140H47-1	CHARGER CASE COMPLETE		1				
D10		INC. 6,7						
006	459067-9	LENS B		1				
007	459066-1	LENS A		1				
008	818Y88-4	CHARGING CONDITION LABEL		1				
009	266278-7	TAPPING SCREW FLANGE BT3X10		2				
010	632G53-9	TERMINAL UNIT		2				
011	266764-8	TAPPING SCREW 3X8		4				
012	233194-8	COMPRESSION SPRING 4		2				
013	459069-5	TERMINAL BASE		2				
014	620A20-0	FILTER CIRCUIT		1				
015	620B08-6	CHARGING CIRCUIT		2				
D10		INC. 16,17						
016	652067-0	FUSE		2				
017	647070-4	VARISTOR		2				
018	667746-7	POWER SUPPLY CORD		1				
019	459068-7	CHARGER CASE COVER		1				
020	266346-6	TAPPING SCREW BT 4X20		6				
021	286255-3	CAP 13		4				
022	855K61-9	DC18SH NAME PLATE		1				

Please order the parts with part number.

Print Date 30/11/2020